

Datasheet for ABIN3032710
anti-SPHK1 antibody (AA 286-315)



[Go to Product page](#)

6 Images

Overview

Quantity:	0.2 mL
Target:	SPHK1
Binding Specificity:	AA 286-315
Reactivity:	Human, Mouse, Rat, Primate
Host:	Rabbit
Clonality:	Polyclonal
Conjugate:	This SPHK1 antibody is un-conjugated
Application:	Western Blotting (WB), Immunohistochemistry (IHC), ELISA

Product Details

Immunogen:	A portion of amino acids 286-315 from the human protein was used as the immunogen for this SPHK1 antibody.
Isotype:	Ig Fraction
Purification:	Purified

Target Details

Target:	SPHK1
Alternative Name:	SPHK1 (SPHK1 Products)
Background:	Sphingosine Kinase (SphK) catalyzes the phosphorylation of the lipid sphingosine, creating the bioactive lipid sphingosine-1-phosphate (S1P). S1P subsequently signals through cell surface G protein-coupled receptors, as well as intracellularly, to modulate cell proliferation, survival,

Target Details

motility and differentiation. SphK is an important signaling enzyme which is activated by diverse agents, including growth factors that signal through receptor tyrosine kinases, agents activating G protein-coupled receptors, and immunoglobulin receptors. Two SphK isotypes, SphK-1 and SphK-2, have been cloned, and both isotypes are ubiquitously expressed. SphK-1 has been shown to mediate cell growth, prevention of apoptosis, and cellular transformation, and is upregulated in a variety of human tumors. In contrast, SphK-2 increases apoptosis, and may be responsible for phosphorylating and activating the immunosuppressive drug FTY720.

UniProt: [Q9NYA1](#)

Pathways: [VEGF Signaling](#)

Application Details

Application Notes: Titration of the SPHK1 antibody may be required due to differences in protocols and secondary/substrate sensitivity.\. Western blot: 1:1000,IHC (Paraffin): 1:50-1:100

Restrictions: For Research Use only

Handling

Format: Liquid

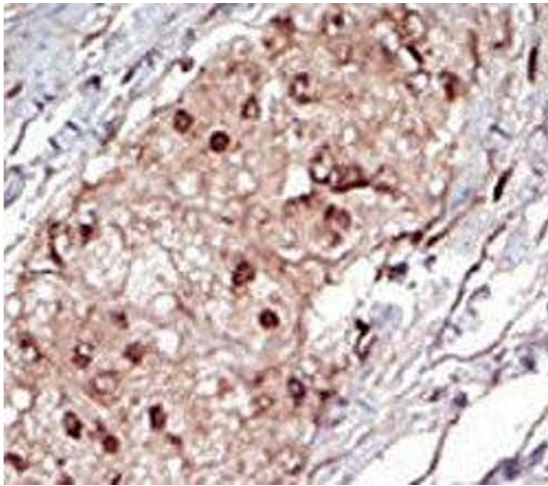
Buffer: In 1X PBS, pH 7.4, with 0.09 % sodium azide

Preservative: Sodium azide

Precaution of Use: This product contains Sodium azide: a POISONOUS AND HAZARDOUS SUBSTANCE which should be handled by trained staff only.

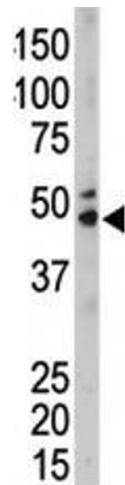
Storage: -20 °C

Storage Comment: Aliquot the SPHK1 antibody and store frozen at -20°C or colder. Avoid repeated freeze-thaw cycles.



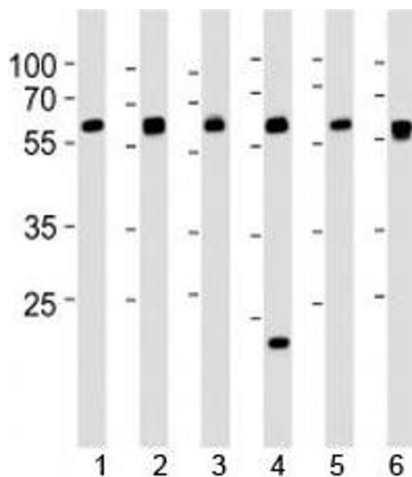
Immunohistochemistry

Image 1. IHC analysis of FFPE human hepatocarcinoma tissue stained with the SPHK1 antibody



Western Blotting

Image 2. The SPHK1 antibody used in western blot to detect SPHK1 in mouse kidney tissue lysate



Western Blotting

Image 3. Western blot analysis of lysate from 1) 293, 2) HepG2, 3) HUVEC, 4) Raji, 5) rat C6 and 6) mouse C2C12 cell line using SPHK1 antibody at 1:1000. Predicted molecular weight: 42-51 kDa.

Please check the [product details page](#) for more images. Overall 6 images are available for ABIN3032710.