

Datasheet for ABIN3032711
anti-SPHK1 antibody (AA 59-89)

5 Images

[Go to Product page](#)

Overview

Quantity:	0.4 mL
Target:	SPHK1
Binding Specificity:	AA 59-89
Reactivity:	Human
Host:	Rabbit
Clonality:	Polyclonal
Conjugate:	This SPHK1 antibody is un-conjugated
Application:	Western Blotting (WB), Immunohistochemistry (IHC), ELISA

Product Details

Immunogen:	A portion of amino acids 59-89 from the human protein was used as the immunogen for this SPHK1 antibody.
Isotype:	Ig Fraction
Purification:	Purified

Target Details

Target:	SPHK1
Alternative Name:	SPHK1 (SPHK1 Products)
Background:	Sphingosine Kinase (SphK) catalyzes the phosphorylation of the lipid sphingosine, creating the bioactive lipid sphingosine-1-phosphate (S1P). S1P subsequently signals through cell surface G protein-coupled receptors, as well as intracellularly, to modulate cell proliferation, survival,

Target Details

motility and differentiation. SphK is an important signaling enzyme which is activated by diverse agents, including growth factors that signal through receptor tyrosine kinases, agents activating G protein-coupled receptors, and immunoglobulin receptors. Two SphK isotypes, SphK-1 and SphK-2, have been cloned, and both isotypes are ubiquitously expressed. SphK-1 has been shown to mediate cell growth, prevention of apoptosis, and cellular transformation, and is upregulated in a variety of human tumors. In contrast, SphK-2 increases apoptosis, and may be responsible for phosphorylating and activating the immunosuppressive drug FTY720.

UniProt: [Q9NYA1](#)

Pathways: [VEGF Signaling](#)

Application Details

Application Notes: Titration of the SPHK1 antibody may be required due to differences in protocols and secondary/substrate sensitivity.\. IHC (Paraffin): 1:100,Western blot: 1:1000

Restrictions: For Research Use only

Handling

Format: Liquid

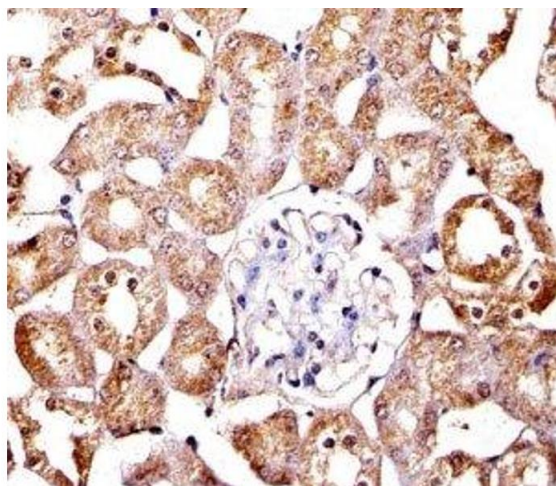
Buffer: In 1X PBS, pH 7.4, with 0.09 % sodium azide

Preservative: Sodium azide

Precaution of Use: This product contains Sodium azide: a POISONOUS AND HAZARDOUS SUBSTANCE which should be handled by trained staff only.

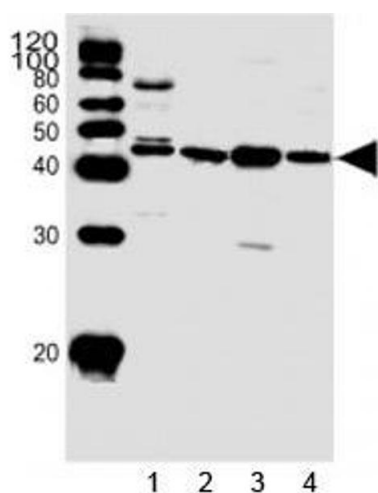
Storage: -20 °C

Storage Comment: Aliquot the SPHK1 antibody and store frozen at -20°C or colder. Avoid repeated freeze-thaw cycles.



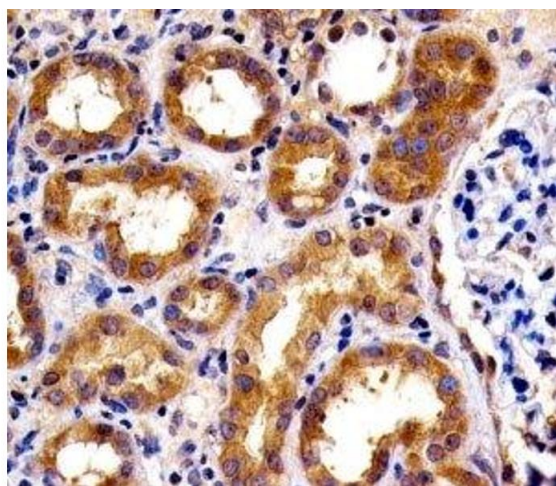
Immunohistochemistry

Image 1. Immunohistochemical analysis of paraffin-embedded mouse kidney section using SPHK1 antibody; Ab was diluted at 1:100 dilution.



Western Blotting

Image 2. Western blot analysis of lysate from 1) HepG2 cell line and human 2) heart, 3) skeletal muscle, 4) kidney tissue using SPHK1 antibody at 1:1000. Predicted molecular weight: 42-51 kDa.



Immunohistochemistry

Image 3. IHC analysis of FFPE human kidney section using SPHK1 antibody; Ab was diluted at 1:100.

Please check the [product details page](#) for more images. Overall 5 images are available for ABIN3032711.