



[Go to Product page](#)

Datasheet for ABIN3032714
anti-S1PR5 antibody (AA 219-247)

2 Images

Overview

Quantity:	0.4 mL
Target:	S1PR5
Binding Specificity:	AA 219-247
Reactivity:	Human
Host:	Rabbit
Clonality:	Polyclonal
Conjugate:	This S1PR5 antibody is un-conjugated
Application:	ELISA, Western Blotting (WB)

Product Details

Immunogen:	A portion of amino acids 219-247 from the human protein was used as the immunogen for this EDG8 antibody.
Isotype:	Ig Fraction
Purification:	Antigen affinity purified

Target Details

Target:	S1PR5
Alternative Name:	EDG8 (S1PR5 Products)
Background:	The lysosphingolipid sphingosine 1-phosphate (S1P) regulates cell proliferation, apoptosis, motility, and neurite retraction. Its actions may be both intracellular as a second messenger and extracellular as a receptor ligand. S1P and the structurally related lysolipid mediator

Target Details

lysophosphatidic acid (LPA) signal cells through a set of G protein-coupled receptors known as EDG receptors. Some EDG receptors (e.g., EDG1, MIM 601974) are S1P receptors, others (e.g., EDG2, MIM 602282) are LPA receptors.

UniProt: [Q9H228](#)

Application Details

Application Notes: Titration of the EDG8 antibody may be required due to differences in protocols and secondary/substrate sensitivity.\. Western blot: 1:1000

Restrictions: For Research Use only

Handling

Format: Liquid

Buffer: In 1X PBS, pH 7.4, with 0.09 % sodium azide

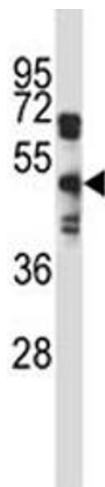
Preservative: Sodium azide

Precaution of Use: This product contains Sodium azide: a POISONOUS AND HAZARDOUS SUBSTANCE which should be handled by trained staff only.

Storage: -20 °C

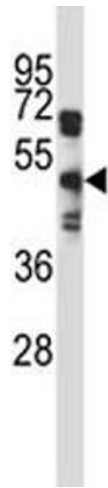
Storage Comment: Aliquot the EDG8 antibody and store frozen at -20°C or colder. Avoid repeated freeze-thaw cycles.

Images



Western Blotting

Image 1. EDG8 antibody western blot analysis in A549 lysate.



Western Blotting

Image 2. EDG8 antibody western blot analysis in A549 lysate.