



[Go to Product page](#)

Datasheet for ABIN3032719

## anti-Splicing Factor 1 antibody (N-Term)

### 6 Images

#### Overview

Quantity:	100 µg
Target:	Splicing Factor 1 (SF1)
Binding Specificity:	N-Term
Reactivity:	Human, Mouse, Rat
Host:	Rabbit
Clonality:	Polyclonal
Conjugate:	This Splicing Factor 1 antibody is un-conjugated
Application:	Western Blotting (WB), Immunohistochemistry (Paraffin-embedded Sections) (IHC (p)), Immunocytochemistry (ICC), Immunohistochemistry (Frozen Sections) (IHC (fro))

#### Product Details

Immunogen:	An amino acid sequence from the N-terminus of human Splicing factor 1 (DFPSKKRKRSRWNQDTMEQK) was used as the immunogen for this Splicing factor 1 antibody (100% homologous in human, mouse and rat).
Isotype:	IgG
Purification:	Antigen affinity

#### Target Details

Target:	Splicing Factor 1 (SF1)
Alternative Name:	Splicing Factor 1 ( <a href="#">SF1 Products</a> )
Background:	Splicing factor 1, also known as sSF1, Zinc finger protein 162 (ZNF162), ZFM162, Transcription

## Target Details

factor ZFM1, and Mammalian branch point-binding protein (BBP or mBBP), is a protein that in humans is encoded by the SF1 gene. It is predicted 623-amino acid protein. RT-PCR was used to show expression in the thyroid gland, pancreas, adrenal gland, and ovary. All of the isoforms contain a KH domain, a sequence motif present in proteins playing a major role in regulating cellular RNA metabolism.

UniProt: [Q15637](#)

Pathways: [Nuclear Receptor Transcription Pathway](#), [Steroid Hormone Mediated Signaling Pathway](#), [Ribonucleoprotein Complex Subunit Organization](#), [Maintenance of Protein Location](#)

## Application Details

Application Notes: The stated application concentrations are suggested starting amounts. Titration of the Splicing factor 1 antibody may be required due to differences in protocols and secondary/substrate sensitivity. Western blot: 0.5-1 µg/mL, IHC (Paraffin): 0.5-1 µg/mL, IHC (Frozen): 0.5-1 µg/mL, Immunocytochemistry: 0.5-1 µg/mL

Restrictions: For Research Use only

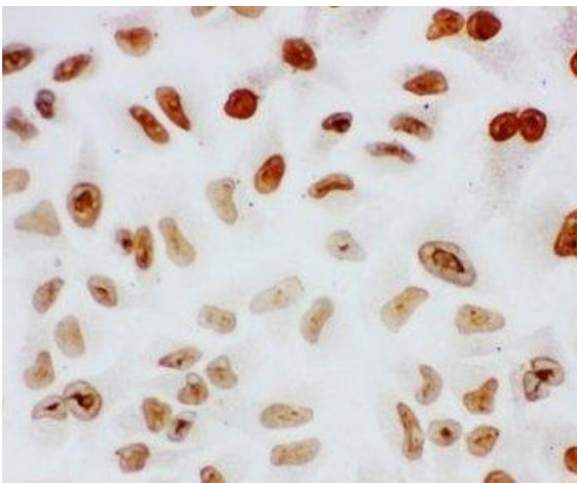
## Handling

Buffer: 0.5 mg/mL if reconstituted with 0.2 mL sterile DI water

Storage: -20 °C

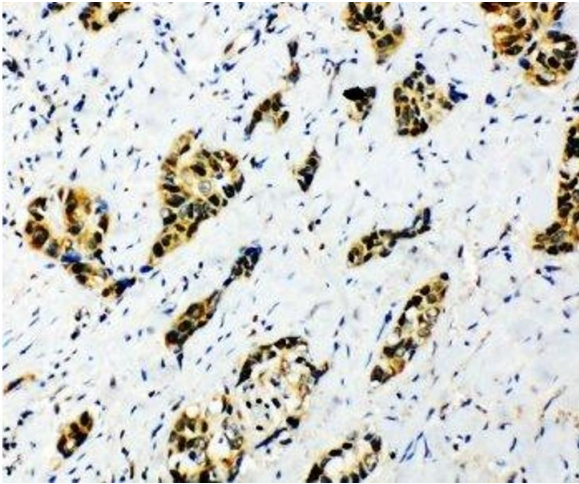
Storage Comment: After reconstitution, the Splicing factor 1 antibody can be stored for up to one month at 4°C. For long-term, aliquot and store at -20°C. Avoid repeated freezing and thawing.

## Images



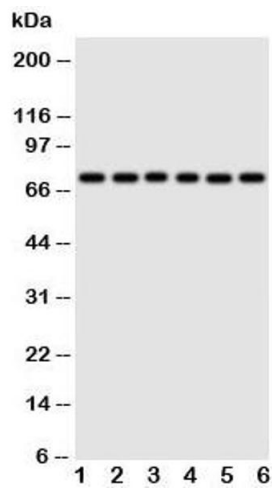
### Immunocytochemistry

**Image 1.** ICC testing of Splicing factor 1 antibody and HeLa cells



### Immunohistochemistry

**Image 2.** IHC-P: Splicing factor 1 antibody testing of human lung cancer tissue



### Western Blotting

**Image 3.** Western blot testing of Splicing factor 1 antibody and Lane 1: rat spleen; 2: rat liver; 3: PANC; 4: COLO320; 5: SW620; 6: SKOV cell lysate

Please check the [product details page](#) for more images. Overall 6 images are available for ABIN3032719.