

Datasheet for ABIN3032720
anti-SOX1 antibody (AA 47-76)[Go to Product page](#)

3 Images

Overview

Quantity:	0.4 mL
Target:	SOX1
Binding Specificity:	AA 47-76
Reactivity:	Human
Host:	Rabbit
Clonality:	Polyclonal
Conjugate:	This SOX1 antibody is un-conjugated
Application:	Western Blotting (WB), ELISA, Flow Cytometry (FACS)

Product Details

Immunogen:	A portion of amino acids 47-76 from the human protein was used as the immunogen for this SOX1 antibody.
Isotype:	Ig Fraction
Cross-Reactivity (Details):	Expected species reactivity: Mouse, Primate, Chicken, Zebrafish, Xenopus
Purification:	Purified

Target Details

Target:	SOX1
Alternative Name:	SOX1 (SOX1 Products)
Background:	This intronless gene encodes a member of the SOX (SRY-related HMG-box) family of

Target Details

transcription factors involved in the regulation of embryonic development and in the determination of the cell fate. The encoded protein may act as a transcriptional activator after forming a protein complex with other proteins. In mice, a similar protein regulates the gamma-crystallin genes and is essential for lens development.

UniProt: [O00570](#)

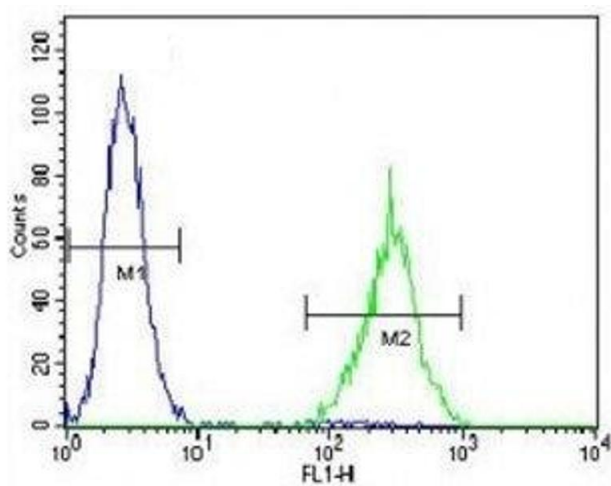
Application Details

Application Notes:	Titration of the SOX1 antibody may be required due to differences in protocols and secondary/substrate sensitivity.\. Western blot: 1:1000,Flow Cytometry: 1:10-1:50
Restrictions:	For Research Use only

Handling

Format:	Liquid
Buffer:	In 1X PBS, pH 7.4, with 0.09 % sodium azide
Preservative:	Sodium azide
Precaution of Use:	This product contains Sodium azide: a POISONOUS AND HAZARDOUS SUBSTANCE which should be handled by trained staff only.
Storage:	-20 °C
Storage Comment:	Aliquot the SOX1 antibody and store frozen at -20°C or colder. Avoid repeated freeze-thaw cycles.

Images



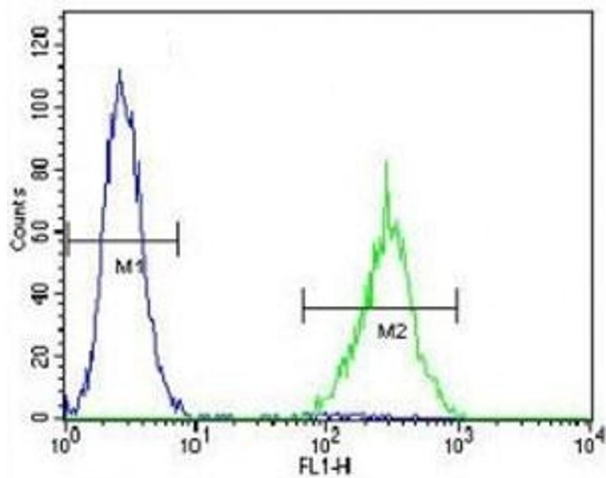
Flow Cytometry

Image 1. SOX1 antibody flow cytometric analysis of NCI-H460 cells (right histogram) compared to a negative control (left histogram). FITC-conjugated goat-anti-rabbit secondary Ab was used for the analysis



Western Blotting

Image 2. SOX1 antibody western blot analysis in NCI-H460 lysate.



Flow Cytometry

Image 3. SOX1 antibody flow cytometric analysis of NCI-H460 cells (right histogram) compared to a