

Datasheet for ABIN3032748  
**anti-SSB antibody (AA 66-96)**[Go to Product page](#)

## 5 Images

## Overview

Quantity:	0.4 mL
Target:	SSB
Binding Specificity:	AA 66-96
Reactivity:	Human
Host:	Rabbit
Clonality:	Polyclonal
Conjugate:	This SSB antibody is un-conjugated
Application:	ELISA, Western Blotting (WB), Immunohistochemistry (IHC), Flow Cytometry (FACS)

## Product Details

Immunogen:	A portion of amino acids 66-96 from the human protein was used as the immunogen for this SSB antibody.
Isotype:	Ig Fraction
Cross-Reactivity (Details):	Expected species reactivity: Bovine
Purification:	Purified

## Target Details

Target:	SSB
Alternative Name:	SSB ( <a href="#">SSB Products</a> )
Background:	SSB is involved in diverse aspects of RNA metabolism, including binding and protecting 3-prime

## Target Details

UUU(OH) elements of newly RNA polymerase III -transcribed RNA, processing 5-prime and 3-prime ends of pre-tRNA precursors, acting as an RNA chaperone, and binding viral RNAs associated with hepatitis C virus. This protein was originally defined by its reactivity with autoantibodies from patients with Sjogren syndrome and systemic lupus erythematosus.

UniProt: [P05455](#)

## Application Details

Application Notes: Titration of the SSB antibody may be required due to differences in protocols and secondary/substrate sensitivity.\. Western blot: 1:1000,IHC (Paraffin): 1:50-1:100,Flow Cytometry: 1:10-1:50

Restrictions: For Research Use only

## Handling

Format: Liquid

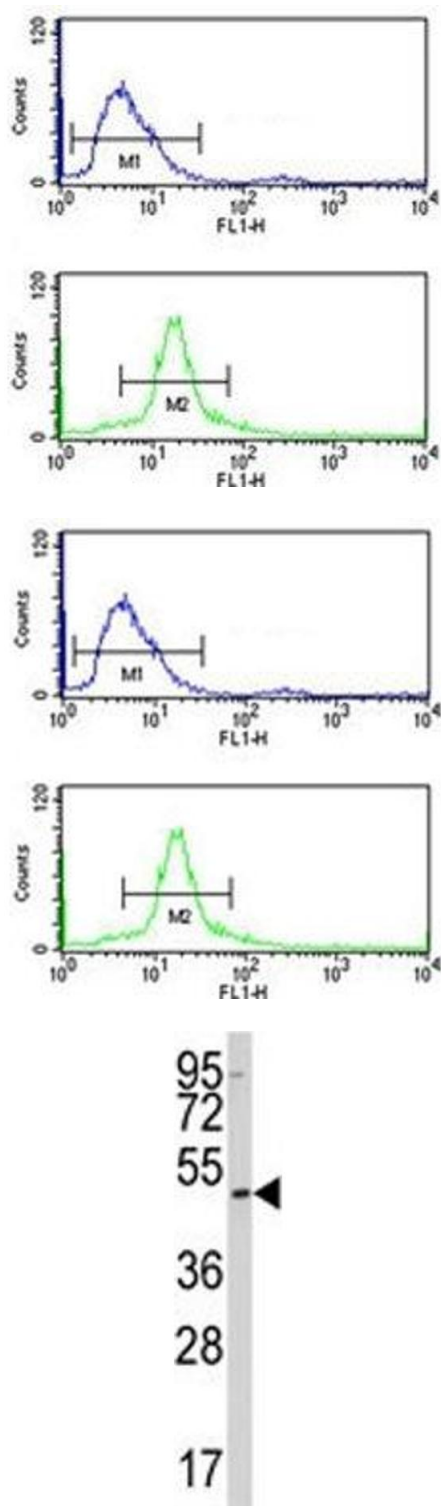
Buffer: In 1X PBS pH 7.4 with 0.09 % sodium azide

Preservative: Sodium azide

Precaution of Use: This product contains Sodium azide: a POISONOUS AND HAZARDOUS SUBSTANCE which should be handled by trained staff only.

Storage: -20 °C

Storage Comment: Aliquot the SSB antibody and store frozen at -20°C or colder. Avoid repeated freeze-thaw cycles.



### Flow Cytometry

**Image 1.** SSB antibody flow cytometry analysis of 293 cells (bottom histogram) compared to a negative control cell (top histogram). FITC-conjugated goat-anti-rabbit secondary Ab was used for the analysis.

### Flow Cytometry

**Image 2.** SSB antibody flow cytometry analysis of 293 cells (bottom histogram) compared to a negative control cell (top histogram). FITC-conjugated goat-anti-rabbit secondary Ab was used for the analysis.

### Western Blotting

**Image 3.** Western blot analysis of SSB antibody and 293 lysate.

Please check the [product details page](#) for more images. Overall 5 images are available for ABIN3032748.