

Datasheet for ABIN3032752
anti-SREBF2 antibody (AA 399-427)

5 Images

[Go to Product page](#)

Overview

Quantity:	0.4 mL
Target:	SREBF2
Binding Specificity:	AA 399-427
Reactivity:	Human
Host:	Rabbit
Clonality:	Polyclonal
Conjugate:	This SREBF2 antibody is un-conjugated
Application:	Western Blotting (WB), ELISA, Immunohistochemistry (IHC), Immunofluorescence (IF)

Product Details

Immunogen:	A portion of amino acids 399-427 from the human protein was used as the immunogen for this SREBP2 antibody.
Isotype:	Ig Fraction
Purification:	Antigen affinity purified

Target Details

Target:	SREBF2
Alternative Name:	SREBP2 (SREBF2 Products)
Background:	SREBPs, including SREBP-1a, SREBP-1c, and SREBP-2, constitute a family of basic helix-loop-helix (bHLH) transcription factors that play a critical role in lipid homeostasis by regulating genes involved in cholesterol and fatty acid metabolism. Each SREBP consists of three

Target Details

domains, including an amino-terminal transcription factor domain of ~480 amino acids, a middle hydrophobic region of ~80 amino acids containing two hydrophobic transmembrane segments, and a carboxy-terminal regulatory domain of ~590 amino acids. SREBP-2 regulates cholesterol synthesis by activating the transcription of genes for HMG-CoA reductase and other enzymes of the cholesterol synthetic pathway. SREBP-2 is ubiquitously detected in various tissues. Under basal conditions SREBP is bound to ER membranes as a glycosylated precursor protein. Upon cholesterol depletion, the protein is cleaved to its active forms (about 50-68 kDa) and translocated into the nucleus to stimulate transcription of genes involved in the uptake and synthesis of cholesterol.

UniProt: [Q12772](#)

Pathways: [Regulation of Lipid Metabolism by PPARalpha](#)

Application Details

Application Notes: Titration of the SREBP2 antibody may be required due to differences in protocols and secondary/substrate sensitivity.\. Immunofluorescence: 1:10-1:50,Western blot: 1:1000,IHC (Paraffin): 1:10-1:50

Restrictions: For Research Use only

Handling

Format: Liquid

Buffer: In 1X PBS, pH 7.4, with 0.09 % sodium azide

Preservative: Sodium azide

Precaution of Use: This product contains Sodium azide: a POISONOUS AND HAZARDOUS SUBSTANCE which should be handled by trained staff only.

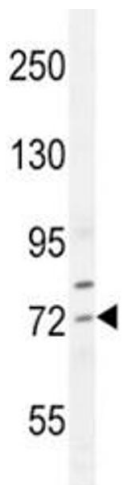
Storage: -20 °C

Storage Comment: Aliquot the SREBP2 antibody and store frozen at -20°C or colder. Avoid repeated freeze-thaw cycles.



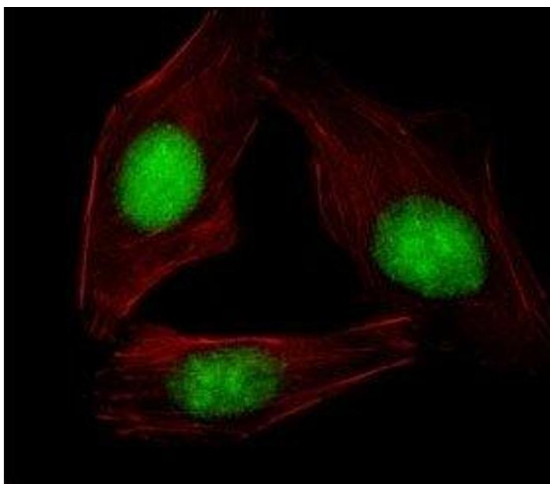
Western Blotting

Image 1. SREBP2 antibody western blot analysis in HepG2 lysate



Western Blotting

Image 2. SREBP2 antibody western blot analysis in HepG2 lysate



Immunofluorescence

Image 3. Fluorescent image of U251 cells stained with SREBP2 antibody. Alexa Fluor 488 conjugated secondary (green) was used. Cytoplasmic actin was counterstained with Alexa Fluor 555 (red) conjugated Phalloidin.

Please check the [product details page](#) for more images. Overall 5 images are available for ABIN3032752.