

Datasheet for ABIN3032755
anti-STUB1 antibody (AA 203-231)[Go to Product page](#)

6 Images

Overview

Quantity:	0.4 mL
Target:	STUB1
Binding Specificity:	AA 203-231
Reactivity:	Human
Host:	Rabbit
Clonality:	Polyclonal
Conjugate:	This STUB1 antibody is un-conjugated
Application:	Western Blotting (WB), ELISA, Immunohistochemistry (IHC)

Product Details

Immunogen:	A portion of amino acids 203-231 from the human protein was used as the immunogen for this STUB1 antibody.
Isotype:	Ig Fraction
Cross-Reactivity (Details):	Expected species reactivity: Mouse, Chicken
Purification:	Antigen affinity purified

Target Details

Target:	STUB1
Alternative Name:	STUB1 (STUB1 Products)
Background:	CHIP is an E3 ligase for nNOS whose action is facilitated by (and possibly requires) its

Target Details

interaction with nNOS-bound hsp70. Co-chaperone CHIP, possibly with another E3 ligase(s), modulates the ubiquitylation of mutant Cu/Zn-superoxide dismutase and renders them more susceptible for proteasomal degradation. CHIP functions as a negative regulator of AR transcriptional activity by promoting AR degradation. CHIP-Hsc70 complex ubiquitinates phosphorylated tau and enhances cell survival. CHIP can interact with the Smad1/Smad4 proteins and block BMP signal transduction through the ubiquitin-mediated degradation of Smad proteins. CHIP E3 controls both the association of Hsp70/Hsp90 chaperones with ErbB2 and the down-regulation of ErbB2 induced by inhibitors of Hsp90. CHIP is associated with Parkin and enhances its ubiquitin ligase activity related to Parkinson's disease.

UniProt: [Q9UNE7](#)

Pathways: [Regulation of Hormone Metabolic Process](#), [Response to Water Deprivation](#)

Application Details

Application Notes: Titration of the STUB1 antibody may be required due to differences in protocols and secondary/substrate sensitivity.\. Western blot: 1:1000,IHC (Paraffin): 1:50-1:100

Restrictions: For Research Use only

Handling

Format: Liquid

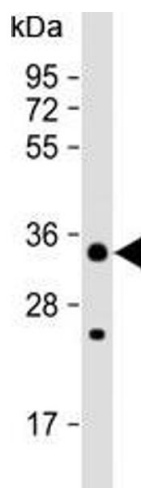
Buffer: In 1X PBS pH 7.4 with 0.09 % sodium azide

Preservative: Sodium azide

Precaution of Use: This product contains Sodium azide: a POISONOUS AND HAZARDOUS SUBSTANCE which should be handled by trained staff only.

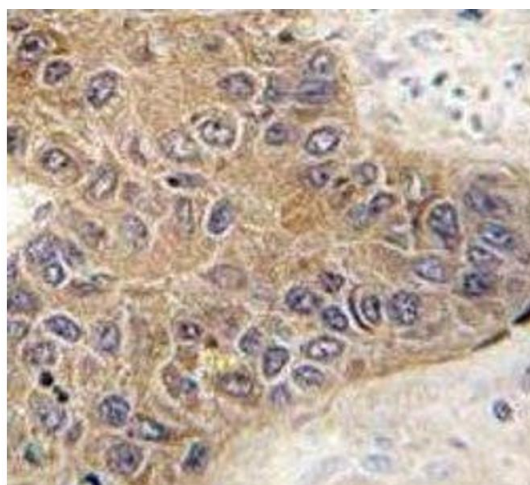
Storage: -20 °C

Storage Comment: Aliquot the STUB1 antibody and store frozen at -20°C or colder. Avoid repeated freeze-thaw cycles.



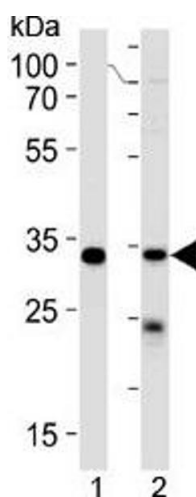
Western Blotting

Image 1. CHIP / STUB1 antibody western blot analysis in 293 lysate



Immunohistochemistry

Image 2. IHC analysis of FFPE human hepatocarcinoma tissue stained with STUB1 antibody



Western Blotting

Image 3. STUB1 antibody western blot analysis in 293 cell line and human placenta lysate

Please check the [product details page](#) for more images. Overall 6 images are available for ABIN3032755.