

Datasheet for ABIN3032756

anti-14-3-3 sigma/SFN antibody (AA 140-156)**6** Images[Go to Product page](#)

Overview

| | |
|----------------------|---|
| Quantity: | 100 µg |
| Target: | 14-3-3 sigma/SFN (SFN) |
| Binding Specificity: | AA 140-156 |
| Reactivity: | Human, Mouse, Rat |
| Host: | Rabbit |
| Clonality: | Polyclonal |
| Conjugate: | This 14-3-3 sigma/SFN antibody is un-conjugated |
| Application: | Western Blotting (WB), Immunohistochemistry (Paraffin-embedded Sections) (IHC (p)), Immunocytochemistry (ICC) |

Product Details

| | |
|---------------|--|
| Immunogen: | Amino acids 140-156 (KKRIIDSARSAYQEAMD) were used as the immunogen for this 14-3-3 sigma antibody (100% homologous in human, mouse and rat). |
| Isotype: | IgG |
| Purification: | Antigen affinity |

Target Details

| | |
|-------------------|---|
| Target: | 14-3-3 sigma/SFN (SFN) |
| Alternative Name: | 14-3-3 sigma (SFN Products) |
| Background: | Stratifin (SFN), also known as 14-3-3 sigma, is strongly induced by gamma irradiation and other DNA-damaging agents. The induction of 14-3-3-sigma is mediated by a p53 -responsive |

Target Details

element located 1.8 kb upstream of its transcription start site. Leffers et al.(1993) obtained a peptide sequence and subsequently cloned a T-cell cDNA of the 14-3-3 family of conserved proteins. The protein called stratifin was shown to be diffusely distributed in the cytoplasm and was present in cultured epithelial cells. It was most abundant in tissues enriched in stratified keratinizing epithelium.

| | |
|-----------|---|
| UniProt: | P31947 |
| Pathways: | p53 Signaling , Myometrial Relaxation and Contraction |

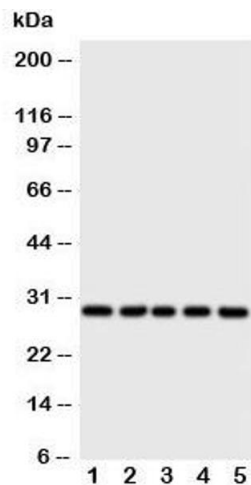
Application Details

| | |
|--------------------|--|
| Application Notes: | The stated application concentrations are suggested starting amounts. Titration of the 14-3-3 sigma antibody may be required due to differences in protocols and secondary/substrate sensitivity.\. Western blot: 0.5-1 µg/mL,IHC (Paraffin): 0.5-1 µg/mL,Immunocytochemistry: 0.5-1 µg/mL |
| Restrictions: | For Research Use only |

Handling

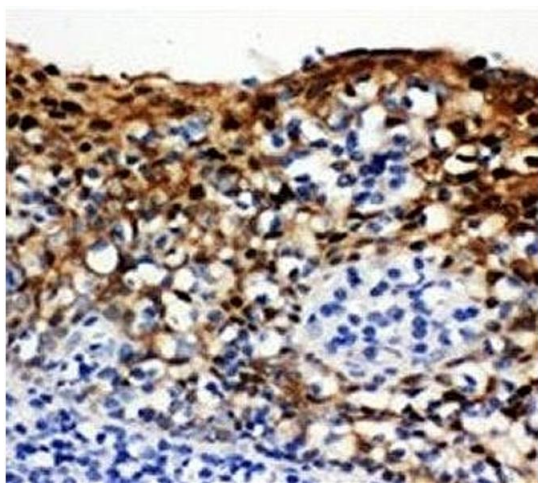
| | |
|------------------|---|
| Buffer: | 0.5 mg/mL if reconstituted with 0.2 mL sterile DI water |
| Storage: | -20 °C |
| Storage Comment: | After reconstitution, the 14-3-3 sigma antibody can be stored for up to one month at 4°C. For long-term, aliquot and store at -20°C. Avoid repeated freezing and thawing. |

Images



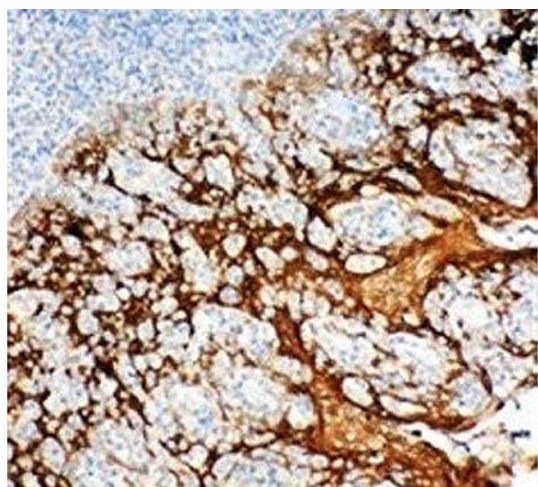
Western Blotting

Image 1. Western blot testing of 14-3-3 sigma antibody and
Lane 1: HeLa; 2: A549; 3: A549; 4: COLO320; 5: SE620 cell lysate



Immunohistochemistry

Image 2. IHC-P: 14-3-3 sigma antibody testing of human tonsil tissue



Immunohistochemistry

Image 3. IHC-P: 14-3-3 sigma antibody testing of human tonsil tissue

Please check the [product details page](#) for more images. Overall 6 images are available for ABIN3032756.