

Datasheet for ABIN3032757  
**anti-STIM1 antibody (AA 509-538)**[Go to Product page](#)

## 3 Images

## Overview

Quantity:	0.4 mL
Target:	STIM1
Binding Specificity:	AA 509-538
Reactivity:	Human
Host:	Rabbit
Clonality:	Polyclonal
Conjugate:	This STIM1 antibody is un-conjugated
Application:	Western Blotting (WB), ELISA, Immunohistochemistry (IHC)

## Product Details

Immunogen:	A portion of amino acids 509-538 from the human protein was used as the immunogen for this STIM1 antibody.
Isotype:	Ig Fraction
Cross-Reactivity (Details):	Expected species reactivity: Mouse
Purification:	Antigen affinity purified

## Target Details

Target:	STIM1
Alternative Name:	STIM1 ( <a href="#">STIM1 Products</a> )
Background:	This gene encodes a type 1 transmembrane protein that mediates Ca <sup>2+</sup> influx after depletion of

## Target Details

intracellular Ca<sup>2+</sup> stores by gating of store-operated Ca<sup>2+</sup> influx channels (SOCs). It is one of several genes located in the imprinted gene domain of 11p15.5, an important tumor-suppressor gene region. Alterations in this region have been associated with the Beckwith-Wiedemann syndrome, Wilms tumor, rhabdomyosarcoma, adrenocortical carcinoma, and lung, ovarian, and breast cancer. This gene may play a role in malignancies and disease that involve this region, as well as early hematopoiesis, by mediating attachment to stromal cells. This gene is oriented in a head-to-tail configuration with the ribonucleotide reductase 1 gene (RRM1), with the 3' end of this gene situated 1.6 kb from the 5' end of the RRM1 gene.

UniProt: [Q13586](#)

Pathways: [TCR Signaling](#), [BCR Signaling](#)

## Application Details

Application Notes: Titration of the STIM1 antibody may be required due to differences in protocols and secondary/substrate sensitivity.\. Western blot: 1:1000,IHC (Paraffin): 1:50-1:100

Restrictions: For Research Use only

## Handling

Format: Liquid

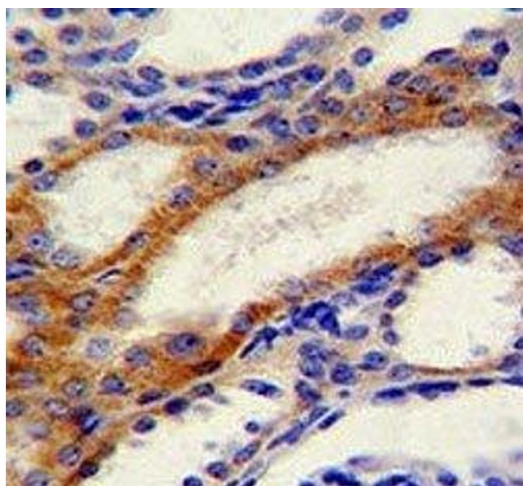
Buffer: In 1X PBS, pH 7.4, with 0.09 % sodium azide

Preservative: Sodium azide

Precaution of Use: This product contains Sodium azide: a POISONOUS AND HAZARDOUS SUBSTANCE which should be handled by trained staff only.

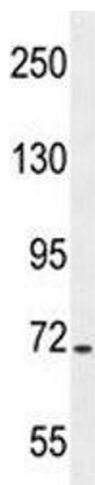
Storage: -20 °C

Storage Comment: Aliquot the STIM1 antibody and store frozen at -20°C or colder. Avoid repeated freeze-thaw cycles.



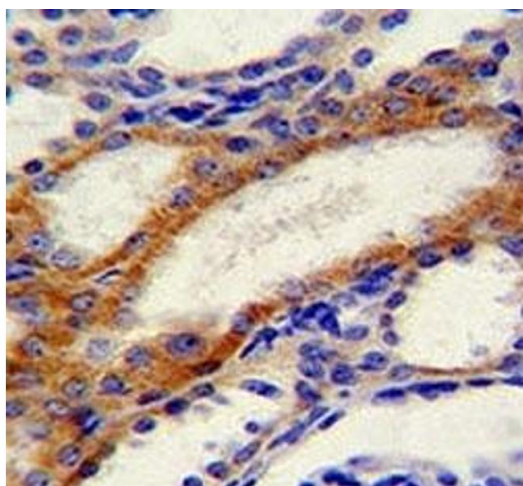
#### Immunohistochemistry

**Image 1.** STIM1 antibody immunohistochemistry analysis in formalin fixed and paraffin embedded human kidney tissue.



#### Western Blotting

**Image 2.** STIM1 antibody western blot analysis in CEM lysate.



#### Immunohistochemistry

**Image 3.** STIM1 antibody immunohistochemistry analysis in formalin fixed and paraffin embedded human kidney tissue.