

Datasheet for ABIN3032758  
**anti-Stim2 antibody (AA 98-127)**[Go to Product page](#)

## 3 Images

## Overview

Quantity:	0.4 mL
Target:	Stim2
Binding Specificity:	AA 98-127
Reactivity:	Human
Host:	Rabbit
Clonality:	Polyclonal
Conjugate:	This Stim2 antibody is un-conjugated
Application:	Western Blotting (WB), ELISA, Immunohistochemistry (IHC)

## Product Details

Immunogen:	A portion of amino acids 98-127 from the human protein was used as the immunogen for this STIM2 antibody.
Isotype:	Ig Fraction
Purification:	Antigen affinity purified

## Target Details

Target:	Stim2
Alternative Name:	STIM2 ( <a href="#">Stim2 Products</a> )
Background:	This gene is a member of the stromal interaction molecule (STIM) family and likely arose, along with related family member STIM1, from a common ancestral gene. The encoded protein functions to regulate calcium concentrations in the cytosol and endoplasmic reticulum, and is

## Target Details

involved in the activation of plasma membrane Orai Ca(2+) entry channels. This gene initiates translation from a non-AUG (UUG) start site. A signal peptide is cleaved from the resulting protein. Multiple transcript variants result from alternative splicing.

UniProt:	<a href="#">Q9P246</a>
Pathways:	<a href="#">TCR Signaling</a> , <a href="#">BCR Signaling</a>

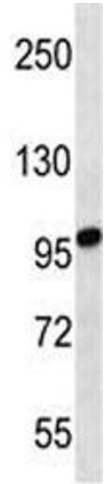
## Application Details

Application Notes:	Titration of the STIM2 antibody may be required due to differences in protocols and secondary/substrate sensitivity.\. Western blot: 1:1000,IHC (Paraffin): 1:10-1:50
Restrictions:	For Research Use only

## Handling

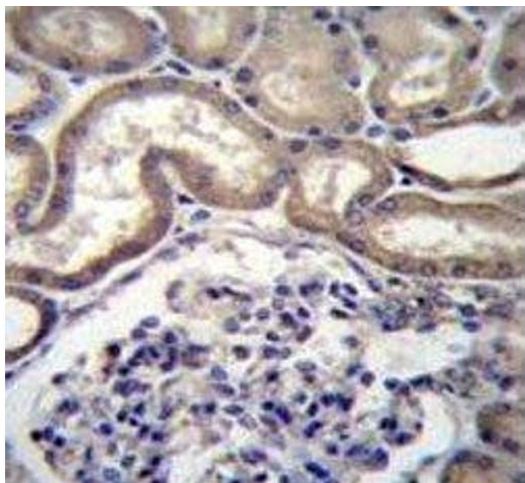
Format:	Liquid
Buffer:	In 1X PBS, pH 7.4, with 0.09 % sodium azide
Preservative:	Sodium azide
Precaution of Use:	This product contains Sodium azide: a POISONOUS AND HAZARDOUS SUBSTANCE which should be handled by trained staff only.
Storage:	-20 °C
Storage Comment:	Aliquot the STIM2 antibody and store frozen at -20°C or colder. Avoid repeated freeze-thaw cycles.

## Images



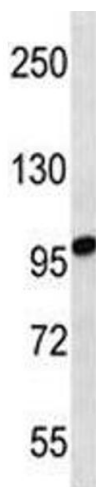
### Western Blotting

**Image 1.** STIM2 antibody western blot analysis in uterus tumor lysate. Predicted molecular weight: 84/94/68 kDa (isoforms 1/2/3).



#### Immunohistochemistry

**Image 2.** STIM2 antibody immunohistochemistry analysis in formalin fixed and paraffin embedded human kidney tissue.



#### Western Blotting

**Image 3.** STIM2 antibody western blot analysis in uterus tumor lysate. Predicted molecular weight: 84/94/68 kDa (isoforms 1/2/3).