

Datasheet for ABIN3032765
anti-SDHC antibody (N-Term)

5 Images

[Go to Product page](#)

Overview

Quantity:	100 µg
Target:	SDHC
Binding Specificity:	N-Term
Reactivity:	Human, Mouse, Rat
Host:	Rabbit
Clonality:	Polyclonal
Conjugate:	This SDHC antibody is un-conjugated
Application:	Western Blotting (WB), Immunohistochemistry (Paraffin-embedded Sections) (IHC (p))

Product Details

Immunogen:	An amino acid sequence from the N-terminus of human Succinate dehydrogenase complex subunit C (KEEMERFWNKNIGSNR) was used as the immunogen for this SDHC antibody.
Isotype:	IgG
Purification:	Antigen affinity

Target Details

Target:	SDHC
Alternative Name:	SDHC (SDHC Products)
Background:	The Succinate dehydrogenase complex, subunit C (SDHC), also called SDH3, gene contains 6 exons. Oostveen et al.(1995) found that in fact it was protein from the bovine SDHC/SDH3 gene (encoding 1 of the 2 integral membrane proteins) that complemented the hamster mutation.

Target Details

The authors localized the human SDH3 gene to the short arm of chromosome one, within 1 to 2 Mb from the centromere. Additionally, the authors stated that Southern analyses of human genomic DNA suggested that there are multiple SDH3 genes or pseudogenes. Elbehti-Green et al.(1998) confirmed the assignment of the SDHC gene to 1q21 by FISH. Baysal et al.(2004) described a family with PGL3 in which an 8,372-bp deletion in the SDHC gene was transmitted both maternally and paternally, without evidence of genomic imprinting.

UniProt: [Q99643](#)

Application Details

Application Notes: The stated application concentrations are suggested starting amounts. Titration of the SDHC antibody may be required due to differences in protocols and secondary/substrate sensitivity.\.
Western blot: 0.5-1 µg/mL,IHC (Paraffin): 0.5-1 µg/mL

Restrictions: For Research Use only

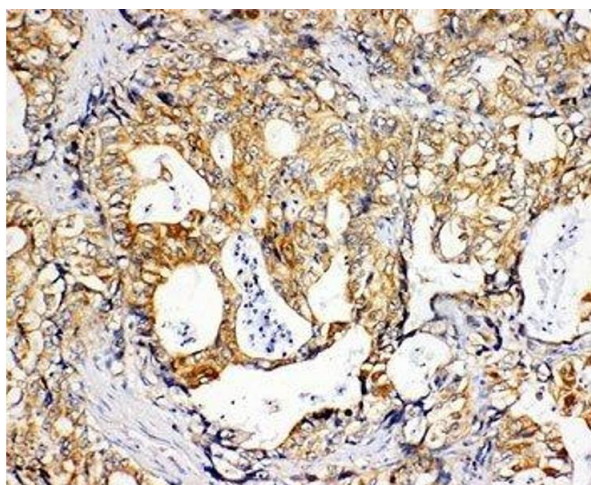
Handling

Buffer: 0.5 mg/mL if reconstituted with 0.2 mL sterile DI water

Storage: -20 °C

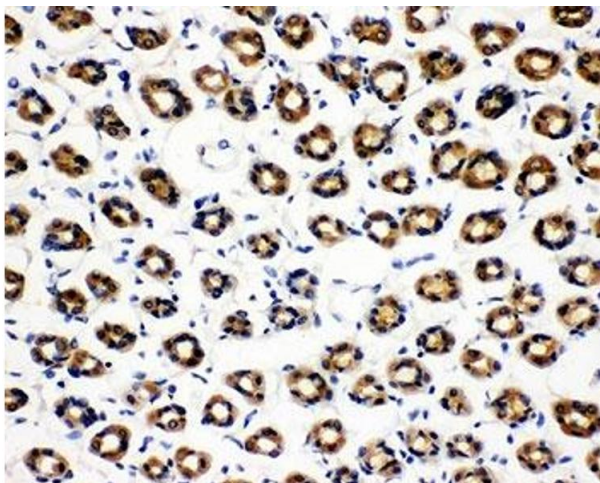
Storage Comment: After reconstitution, the SDHC antibody can be stored for up to one month at 4°C. For long-term, aliquot and store at -20°C. Avoid repeated freezing and thawing.

Images



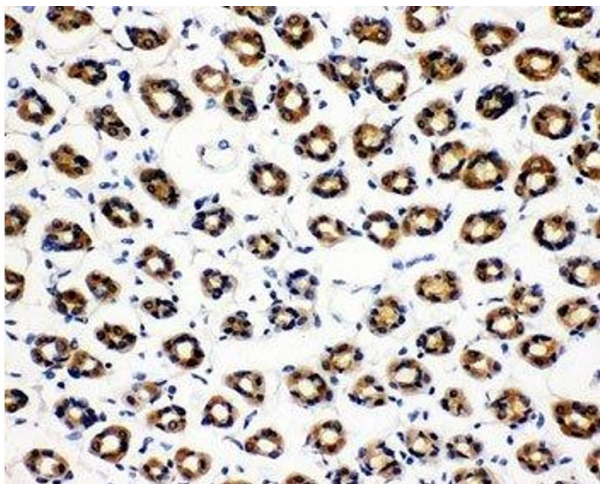
Immunohistochemistry

Image 1. IHC-P: SDHC antibody testing of human gastric cancer tissue



Immunohistochemistry

Image 2. IHC-P: SDHC antibody testing of rat gastric tissue



Immunohistochemistry

Image 3. IHC-P: SDHC antibody testing of rat gastric tissue

Please check the [product details page](#) for more images. Overall 5 images are available for ABIN3032765.