

Datasheet for ABIN3032766
anti-SDHD antibody (AA 13-42)

6 Images

[Go to Product page](#)

Overview

Quantity:	0.4 mL
Target:	SDHD
Binding Specificity:	AA 13-42
Reactivity:	Human
Host:	Rabbit
Clonality:	Polyclonal
Conjugate:	This SDHD antibody is un-conjugated
Application:	Western Blotting (WB), Immunohistochemistry (IHC), ELISA, Immunofluorescence (IF), Flow Cytometry (FACS)

Product Details

Immunogen:	A portion of amino acids 13-42 from the human protein was used as the immunogen for this SDHD antibody.
Isotype:	Ig Fraction
Purification:	Antigen affinity purified

Target Details

Target:	SDHD
Alternative Name:	SDHD (SDHD Products)
Background:	Complex II of the respiratory chain, which is specifically involved in the oxidation of succinate, carries electrons from FADH to CoQ. The complex is composed of four nuclear-encoded

Target Details

subunits and is localized in the mitochondrial inner membrane. The subunit D protein is one of two integral membrane proteins anchoring the complex to the matrix side of the membrane. Mutations in SDHD have been linked to hereditary paraganglioma.

UniProt: [O14521](#)

Application Details

Application Notes: Titration of the SDHD antibody may be required due to differences in protocols and secondary/substrate sensitivity.\. Western blot: 1:1000,IHC (Paraffin): 1:10-1:50,Immunofluorescence: 1:10-1:50,Flow Cytometry: 1:10-1:50

Restrictions: For Research Use only

Handling

Format: Liquid

Buffer: In 1X PBS, pH 7.4, with 0.09 % sodium azide

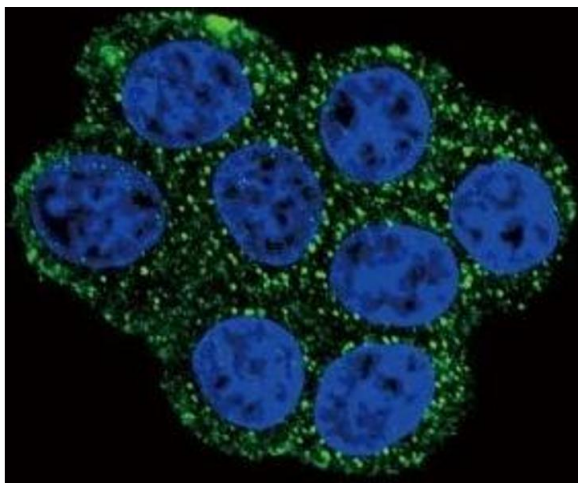
Preservative: Sodium azide

Precaution of Use: This product contains Sodium azide: a POISONOUS AND HAZARDOUS SUBSTANCE which should be handled by trained staff only.

Storage: -20 °C

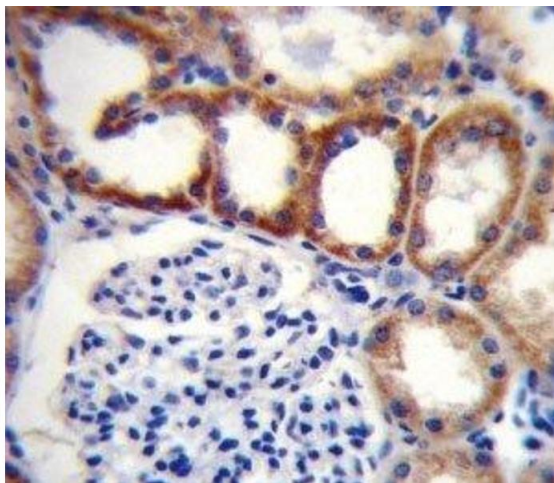
Storage Comment: Aliquot the SDHD antibody and store frozen at -20°C or colder. Avoid repeated freeze-thaw cycles.

Images



Immunofluorescence

Image 1. Confocal immunofluorescent analysis of SDHD antibody with HeLa cells followed by Alexa Fluor 488-conjugated goat anti-rabbit IgG (green). DAPI was used as a nuclear counterstain (blue).



Immunohistochemistry

Image 2. SDHD antibody immunohistochemistry analysis in formalin fixed and paraffin embedded human kidney tissue.



Western Blotting

Image 3. SDHD antibody western blot analysis in HeLa lysate

Please check the [product details page](#) for more images. Overall 6 images are available for ABIN3032766.