

Datasheet for ABIN3032768  
**anti-SUMO antibody (AA 37-66)**



[Go to Product page](#)

3 Images

## Overview

Quantity:	0.4 mL
Target:	SUMO
Binding Specificity:	AA 37-66
Reactivity:	Human, Drosophila melanogaster
Host:	Rabbit
Clonality:	Polyclonal
Conjugate:	This SUMO antibody is un-conjugated
Application:	Western Blotting (WB), ELISA

## Product Details

Immunogen:	A portion of amino acids 37-66 from the drome protein was used as the immunogen for this SUMO antibody.
Isotype:	Ig Fraction
Purification:	Purified

## Target Details

Target:	SUMO
Abstract:	<a href="#">SUMO Products</a>
Background:	Covalent modification of target lysines by SUMO (small ubiquitin-like modifier) modulates processes such as protein localization, transcription, nuclear transport, mitosis, DNA replication and repair, signal transduction, and viral reproduction. SUMO does not seem to be involved in

## Target Details

protein degradation and may in fact function as an antagonist of ubiquitin in the degradation process. In the development of Drosophila, SUMO plays a maternal role in anterior-posterior (A/P) polarity and patterning.

UniProt: [O97102](#)

## Application Details

Application Notes: Titration of the SUMO antibody may be required due to differences in protocols and secondary/substrate sensitivity.\. Western blot: 1:1000

Restrictions: For Research Use only

## Handling

Format: Liquid

Buffer: In 1X PBS pH 7.4 with 0.09 % sodium azide

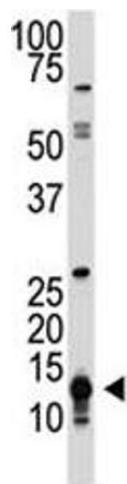
Preservative: Sodium azide

Precaution of Use: This product contains Sodium azide: a POISONOUS AND HAZARDOUS SUBSTANCE which should be handled by trained staff only.

Storage: -20 °C

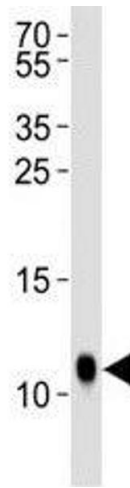
Storage Comment: Aliquot the SUMO antibody and store frozen at -20°C or colder. Avoid repeated freeze-thaw cycles.

## Images



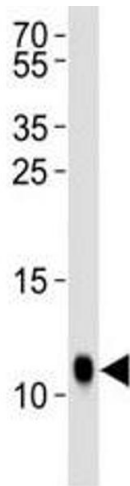
### Western Blotting

**Image 1.** The SUMO1 antibody used in western blot to detect SUMO1 in human HL-60 cell lysate



#### Western Blotting

**Image 2.** Western blot analysis of lysate from *Drosophila* tissue lysate using SUMO antibody diluted at 1:1000.



#### Western Blotting

**Image 3.** Western blot analysis of lysate from *Drosophila* tissue lysate using SUMO antibody diluted at 1:1000.