

Datasheet for ABIN3032771
anti-SOD1 antibody (AA 55-84)[Go to Product page](#)

7 Images

Overview

Quantity:	0.4 mL
Target:	SOD1
Binding Specificity:	AA 55-84
Reactivity:	Human
Host:	Rabbit
Clonality:	Polyclonal
Conjugate:	This SOD1 antibody is un-conjugated
Application:	Western Blotting (WB), ELISA, Immunohistochemistry (IHC), Immunofluorescence (IF), Flow Cytometry (FACS)

Product Details

Immunogen:	A portion of amino acids 55-84 from the human protein was used as the immunogen for this SOD1 antibody.
Isotype:	Ig Fraction
Purification:	Antigen affinity purified

Target Details

Target:	SOD1
Alternative Name:	SOD1 (SOD1 Products)
Background:	SOD1 binds copper and zinc ions and is one of two isozymes responsible for destroying free superoxide radicals in the body. This isozyme is a soluble cytoplasmic protein, acting as a

Target Details

homodimer to convert naturally-occurring but harmful superoxide radicals to molecular oxygen and hydrogen peroxide. The other isozyme is a mitochondrial protein.

UniProt: [P00441](#)

Pathways: [Sensory Perception of Sound](#), [Transition Metal Ion Homeostasis](#)

Application Details

Application Notes: Titration of the SOD1 antibody may be required due to differences in protocols and secondary/substrate sensitivity.\. Western blot: 1:1000,IHC (Paraffin): 1:50-1:100,Flow Cytometry: 1:10-1:50,Immunofluorescence: 1:10-1:50

Restrictions: For Research Use only

Handling

Format: Liquid

Buffer: In 1X PBS, pH 7.4, with 0.09 % sodium azide

Preservative: Sodium azide

Precaution of Use: This product contains Sodium azide: a POISONOUS AND HAZARDOUS SUBSTANCE which should be handled by trained staff only.

Storage: -20 °C

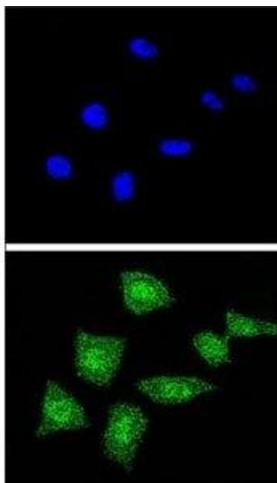
Storage Comment: Aliquot the SOD1 antibody and store frozen at -20°C or colder. Avoid repeated freeze-thaw cycles.

Images



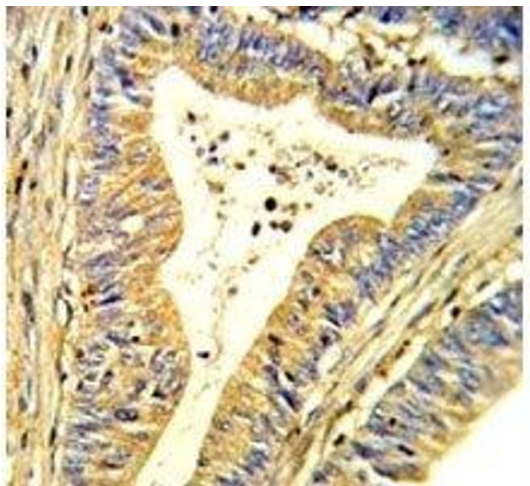
Western Blotting

Image 1. Western blot analysis of SOD1 antibody and Jurkat lysate.



Immunofluorescence

Image 2. Confocal immunofluorescent analysis of SOD1 antibody with 293 cells followed by Alexa Fluor 488-conjugated goat anti-rabbit IgG (green). DAPI was used as a nuclear counterstain (blue).



Immunohistochemistry

Image 3. IHC analysis of FFPE human colon carcinoma stained with SOD1 antibody

Please check the [product details page](#) for more images. Overall 7 images are available for ABIN3032771.