

Datasheet for ABIN303924

anti-MAP2 antibody**2** Images**1** Publication[Go to Product page](#)

Overview

Quantity:	100 µL
Target:	MAP2
Reactivity:	Human, Mouse, Rat, Cow, Mammalian
Host:	Chicken
Clonality:	Polyclonal
Conjugate:	This MAP2 antibody is un-conjugated
Application:	Western Blotting (WB), Immunofluorescence (IF)

Product Details

Immunogen:	Recombinant bovine MAP2 protein expressed in and purified from E. Coli
	Type of Immunogen: Recombinant protein
Specificity:	Specific for the ~280k MAP2 protein.
Purification:	Affinity purified

Target Details

Target:	MAP2
Alternative Name:	MAP2 / MAP-2 (MAP2 Products)
Background:	Name/Gene ID: MAP2
	Synonyms: MAP2, MAP2C, MAP-2, MAP2A, MAP2B

Target Details

Gene ID: 4133

Application Details

Application Notes: Approved: IF (1:2500), WB (1:20000)

Comment: Target Species of Antibody: Bovine

Restrictions: For Research Use only

Handling

Format: Liquid

Concentration: Lot specific

Buffer: 10 mM sodium azide.

Preservative: Sodium azide

Precaution of Use: This product contains Sodium azide: a POISONOUS AND HAZARDOUS SUBSTANCE which should be handled by trained staff only.

Storage: -20 °C

Storage Comment: Short term: -20°C
Long term: -20°C.

Publications

Product cited in: Jacquemet, Paatero, Carisey, Padzik, Orange, Hamidi, Ivaska: "FiloQuant reveals increased filopodia density during breast cancer progression." in: **The Journal of cell biology**, Vol. 216, Issue 10, pp. 3387-3403, (2017) ([PubMed](#)).

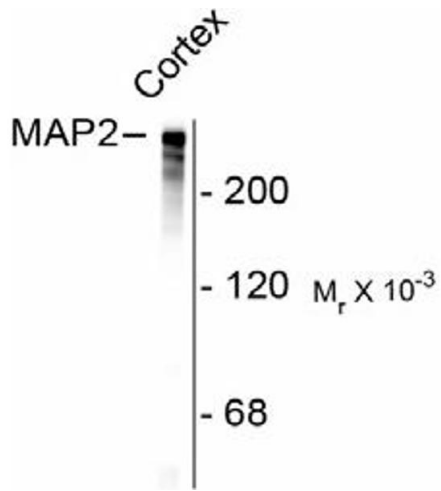


Image 1.

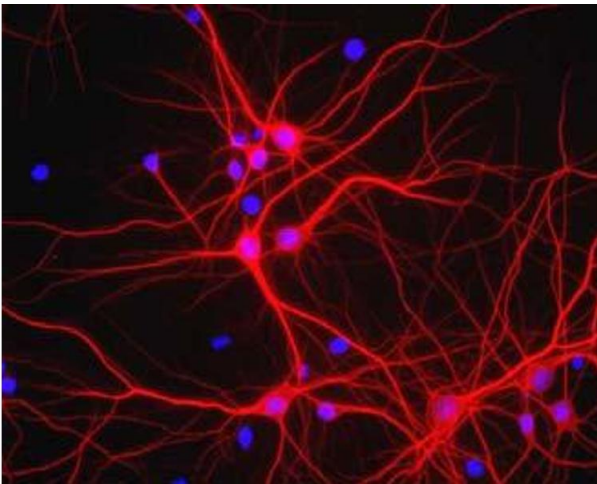


Image 2.