



[Go to Product page](#)

Datasheet for ABIN3042336  
**anti-WNT2 antibody (N-Term)**

1 Image

Overview

Quantity:	100 µg
Target:	WNT2
Binding Specificity:	AA 56-81, N-Term
Reactivity:	Human
Host:	Rabbit
Clonality:	Polyclonal
Conjugate:	This WNT2 antibody is un-conjugated
Application:	Western Blotting (WB)

Product Details

Purpose:	Rabbit IgG polyclonal antibody for Protein Wnt-2(WNT2) detection. Tested with WB in Human.
Immunogen:	A synthetic peptide corresponding to a sequence at the N-terminus of human Wnt2 (56-81aa HRHPDVMRAISQGVAEWTAECQHQR), different from the related mouse sequence by two amino acids.
Sequence:	HRHPDVMRAI SQGVAEWTAECQHQR
Isotype:	IgG
Cross-Reactivity (Details):	No cross reactivity with other proteins.
Characteristics:	Rabbit IgG polyclonal antibody for Protein Wnt-2(WNT2) detection. Tested with WB in Human. Gene Name: wingless-type MMTV integration site family member 2 Protein Name: Protein Wnt-2

## Product Details

---

Purification: Immunogen affinity purified.

## Target Details

---

Target: WNT2

Alternative Name: WNT2 ([WNT2 Products](#))

Background: WNT2, also known as Wingless-type MMTV integration site family, member 2, is a human gene. This gene is a member of the WNT gene family. The WNT gene family consists of structurally related genes which encode secreted signaling proteins. These proteins have been implicated in oncogenesis and in several developmental processes, including regulation of cell fate and patterning during embryogenesis. Alternatively spliced transcript variants have been identified for this gene.

Synonyms: Int 1 related protein antibody|Int 1 related protein antibody|Int-1-like protein 1 antibody|Int-1-related protein antibody|INT1L 1 antibody|INT1L1 antibody|IRP antibody|IRP protein antibody|IRP protein antibody|ONCOGENE INT1 LIKE 1 antibody|Protein Wnt-2 antibody|Secreted growth factor antibody|Wingless type MMTV integration site family member 2 antibody|WNT 2 antibody|WNT 2 antibody|WNT2 antibody|WNT2\_HUMAN antibody

Gene ID: 7472

UniProt: [P09544](#)

Pathways: [WNT Signaling](#)

## Application Details

---

Application Notes: WB: Concentration: 0.1-0.5 µg/mL, Tested Species: Human, The detection limit for Wnt2 is approximately 0.1 ng/lane under reducing conditions.  
Notes: Tested Species: Species with positive results.  
Other applications have not been tested. Optimal dilutions should be determined by end users.

Comment: Antibody can be supported by chemiluminescence kit ABIN921124 in WB.

Restrictions: For Research Use only

## Handling

---

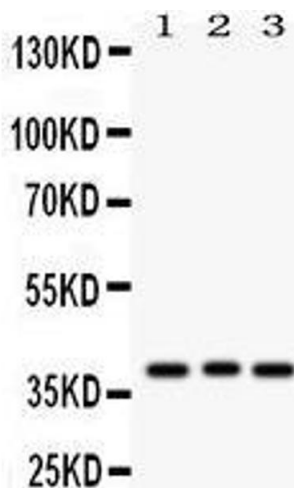
Format: Lyophilized

Reconstitution: Add 0.2 mL of distilled water will yield a concentration of 500 µg/mL.

## Handling

Concentration:	500 µg/mL
Buffer:	Each vial contains 5 mg BSA, 0.9 mg NaCl, 0.2 mg Na <sub>2</sub> HPO <sub>4</sub> , 0.05 mg Sodium azide.
Preservative:	Sodium azide
Precaution of Use:	This product contains Sodium azide: a POISONOUS AND HAZARDOUS SUBSTANCE which should be handled by trained staff only.
Handling Advice:	Avoid repeated freezing and thawing.
Storage:	4 °C/-20 °C
Storage Comment:	At -20°C for one year. After reconstitution, at 4°C for one month. It can also be aliquotted and stored frozen at -20 °C for a longer time. Avoid repeated freezing and thawing.

## Images



### Western Blotting

**Image 1.** Anti-WNT2 Picoband antibody, Western blotting All lanes: Anti WNT2 at 0.5ug/ml Lane 1: COLO320 Whole Cell Lysate at 40ug Lane 2: MCF-7 Whole Cell Lysate at 40ug Lane 3: HELA Whole Cell Lysate at 40ug Predicted bind size: 40KD Observed bind size: 40KD