

Datasheet for ABIN3042366  
**anti-MICB antibody (N-Term)**[Go to Product page](#)

## 1 Image

## Overview

|                      |                                     |
|----------------------|-------------------------------------|
| Quantity:            | 100 µg                              |
| Target:              | MICB                                |
| Binding Specificity: | AA 23-48, N-Term                    |
| Reactivity:          | Human, Rat                          |
| Host:                | Rabbit                              |
| Clonality:           | Polyclonal                          |
| Conjugate:           | This MICB antibody is un-conjugated |
| Application:         | Western Blotting (WB)               |

## Product Details

|                             |   |
|-----------------------------|---|
| Purpose:                    | Rabbit IgG polyclonal antibody for MHC class I polypeptide-related sequence B(MICB) detection. Tested with WB in Human,Rat.   |
| Immunogen:                  | A synthetic peptide corresponding to a sequence at the N-terminus of human MICB (23-48aa AEPHSLRYNLMVLSQDESQSGFLAE).  |
| Sequence:                   | AEPHSLRYNL MVLSQDESQ SGFLAE   |
| Isotype:                    | IgG   |
| Cross-Reactivity (Details): | No cross reactivity with other proteins.  |
| Characteristics:            | <p>Rabbit IgG polyclonal antibody for MHC class I polypeptide-related sequence B(MICB) detection. Tested with WB in Human,Rat.</p> <p>Gene Name: MHC class I polypeptide-related sequence B</p> <p>Protein Name: MHC class I polypeptide-related sequence B</p> |

## Product Details

Purification: Immunogen affinity purified.

## Target Details

Target: MICB

Alternative Name: MICB ([MICB Products](#))

Background: MHC class I polypeptide-related sequence B is a protein that in humans is encoded by the MICB gene. This gene encodes a heavily glycosylated protein which is a ligand for the NKG2D type II receptor. Binding of the ligand activates the cytolytic response of natural killer (NK) cells, CD8 alphabeta T cells, and gammadelta T cells which express the receptor. This protein is stress-induced and is similar to MHC class I molecules, however, it does not associate with beta-2-microglobulin or bind peptides. Alternative splicing results in multiple transcript variants.

Synonyms: MHC class I chain related protein B2 antibody|MHC class I mic B antigen antibody|MHC class I polypeptide related sequence B antibody| MHC class I polypeptide-related sequence B antibody|MIC B antibody|MIC-B antibody|MICB antibody|MICB\_HUMAN antibody|PERB11.2 antibody

Gene ID: 4277

UniProt: [Q29980](#)

Pathways: [Human Leukocyte Antigen \(HLA\) in Adaptive Immune Response](#)

## Application Details

Application Notes: WB: Concentration: 0.1-0.5 µg/mL, Tested Species: Human, Rat  
Notes: Tested Species: Species with positive results.  
Other applications have not been tested. Optimal dilutions should be determined by end users.

Comment: Antibody can be supported by chemiluminescence kit ABIN921124 in WB.

Restrictions: For Research Use only

## Handling

Format: Lyophilized

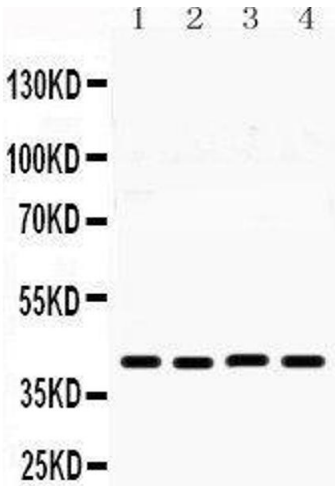
Reconstitution: Add 0.2 mL of distilled water will yield a concentration of 500 µg/mL.

Concentration: 500 µg/mL

Handling

|                    |   |
|--------------------|---|
| Buffer:            | Each vial contains 5 mg BSA, 0.9 mg NaCl, 0.2 mg Na2HPO4, 0.05 mg Sodium azide.   |
| Preservative:      | Sodium azide  |
| Precaution of Use: | This product contains Sodium azide: a POISONOUS AND HAZARDOUS SUBSTANCE which should be handled by trained staff only.  |
| Handling Advice:   | Avoid repeated freezing and thawing.  |
| Storage:           | 4 °C/-20 °C   |
| Storage Comment:   | At -20°C for one year. After reconstitution, at 4°C for one month.<br>It can also be aliquotted and stored frozen at -20 °C for a longer time. Avoid repeated freezing and thawing. |

Images



Western Blotting

Image 1.