

Datasheet for ABIN3042370

**anti-Crossover junction endonuclease EME1 (EME1) (AA 520-561), (C-Term) antibody**[Go to Product page](#)**3** Images

## Overview

|                      |  |
|----------------------|--|
| Quantity:            | 100 µg   |
| Target:              | Crossover junction endonuclease EME1 (EME1)  |
| Binding Specificity: | AA 520-561, C-Term   |
| Reactivity:          | Human, Rat   |
| Host:                | Rabbit   |
| Clonality:           | Polyclonal   |
| Conjugate:           | Un-conjugated  |
| Application:         | Western Blotting (WB), Immunohistochemistry (Paraffin-embedded Sections) (IHC (p)) |

## Product Details

|                             |   |
|-----------------------------|---|
| Purpose:                    | Rabbit IgG polyclonal antibody for Crossover junction endonuclease EME1(EME1) detection.<br>Tested with WB, IHC-P in Human,Rat.   |
| Immunogen:                  | A synthetic peptide corresponding to a sequence at the C-terminus of human EME1 (520-561aa DKERQNLLADIQVRRGEGVTSTSRRIGPELSRRIYLQMTTLQ ), different from the related mouse sequence by five amino acids. |
| Sequence:                   | DKERQNLLAD IQVRRGEGVT STSRRIGPEL SRRIYLQMTT LQ  |
| Isotype:                    | IgG   |
| Cross-Reactivity (Details): | No cross reactivity with other proteins.  |
| Characteristics:            | Rabbit IgG polyclonal antibody for Crossover junction endonuclease EME1(EME1) detection.<br>Tested with WB, IHC-P in Human,Rat.<br><br>Gene Name: essential meiotic structure-specific endonuclease 1   |

## Product Details

Protein Name: Crossover junction endonuclease EME1

Purification: Immunogen affinity purified.

## Target Details

Target: Crossover junction endonuclease EME1 (EME1)

Alternative Name: EME1 ([EME1 Products](#))

Background: Crossover junction endonuclease EME1 is an enzyme that in humans is encoded by the EME1 gene. It is mapped to 17q21.33. This gene encodes a protein that complexes with methyl methanesulfonate-sensitive UV-sensitive 81 protein to form an endonuclease complex. The encoded protein interacts with specific DNA structures including nicked Holliday junctions, 3'-flap structures and aberrant replication fork structures. Also, this protein may be involved in repairing DNA damage and in maintaining genomic stability. Alternative splicing results in multiple transcript variants.

Synonyms: 6820428D13 antibody|Crossover junction endonuclease EME1 antibody|EC 3.1.22.- antibody|EME1 antibody|Eme1 essential meiotic endonuclease 1 homolog 1 (S. pombe) antibody|EME1, S. pombe, homolog of, 1 antibody|EME1\_HUMAN antibody|essential meiotic endonuclease 1 homolog 1 (S pombe) antibody|Essential Meiotic Endonuclease 1 Homolog 1 antibody|essential meiotic endonuclease 1 homolog 2 antibody|Essential meiotic endonuclease 1, S. pombe, homolog of, 1 antibody|FLJ31364 antibody|hMMS4 antibody|homolog of yeast EME1 endonuclease antibody|MGC106543 antibody|MMS4 antibody|MMS4 homolog antibody|MMS4L antibody

Gene ID: 146956

## Application Details

Application Notes: WB: Concentration: 0.1-0.5 µg/mL, Tested Species: Human  
IHC-P: Concentration: 0.5-1 µg/mL, Tested Species: Human, Rat, Epitope Retrieval by Heat: Boiling the paraffin sections in 10 mM citrate buffer, pH 6.0, for 20 mins is required for the staining of formalin/paraffin sections.  
Notes: Tested Species: Species with positive results. Other applications have not been tested. Optimal dilutions should be determined by end users.

Comment: Antibody can be supported by chemiluminescence kit ABIN921124 in WB, supported by ABIN921231 in IHC(P).

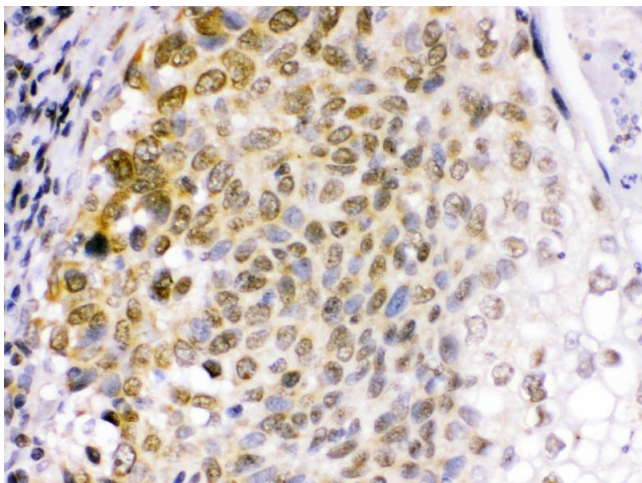
## Application Details

Restrictions: For Research Use only

## Handling

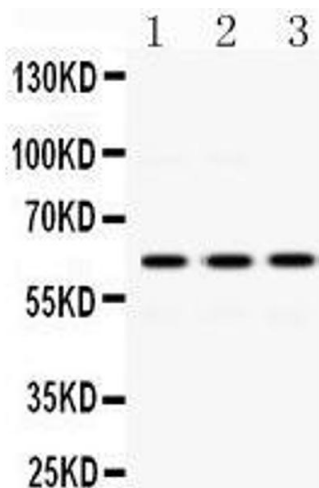
|                    |   |
|--------------------|---|
| Format:            | Lyophilized   |
| Reconstitution:    | Add 0.2 mL of distilled water will yield a concentration of 500 µg/mL.  |
| Concentration:     | 500 µg/mL   |
| Buffer:            | Each vial contains 5 mg BSA, 0.9 mg NaCl, 0.2 mg Na <sub>2</sub> HPO <sub>4</sub> , 0.05 mg Sodium azide.   |
| Preservative:      | Sodium azide  |
| Precaution of Use: | This product contains Sodium azide: a POISONOUS AND HAZARDOUS SUBSTANCE which should be handled by trained staff only.  |
| Handling Advice:   | Avoid repeated freezing and thawing.  |
| Storage:           | 4 °C/-20 °C   |
| Storage Comment:   | At -20°C for one year. After reconstitution, at 4°C for one month.<br><br>It can also be aliquotted and stored frozen at -20 °C for a longer time. Avoid repeated freezing and thawing. |

## Images



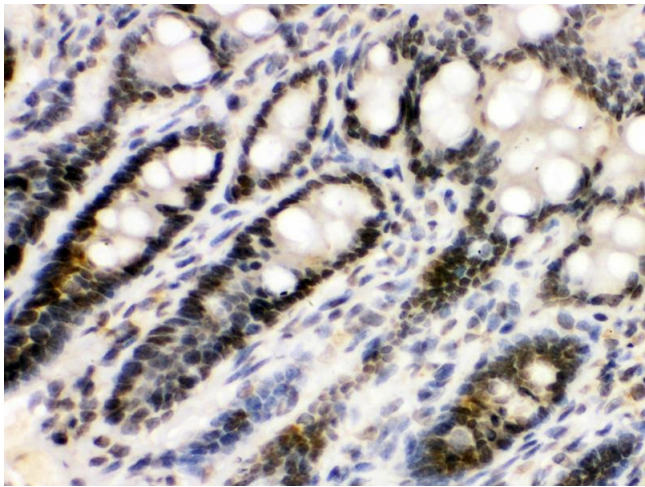
### Immunohistochemistry

**Image 1.** Anti- EME1 Picoband antibody,IHC(P) IHC(P):  
Human Lung Cancer Tissue



Western Blotting

Image 2.



Immunohistochemistry

Image 3. Anti- EME1 Picoband antibody,IHC(P) IHC(P): Rat Intestine Tissue