

Datasheet for ABIN3042372  
**anti-p300 antibody (AA 2065-2414)**[Go to Product page](#)

## 6 Images

## Overview

Quantity:	100 µg
Target:	p300 (EP300)
Binding Specificity:	AA 2065-2414
Reactivity:	Human, Mouse, Rat
Host:	Rabbit
Clonality:	Polyclonal
Conjugate:	This p300 antibody is un-conjugated
Application:	Western Blotting (WB), Immunohistochemistry (Paraffin-embedded Sections) (IHC (p))

## Product Details

Purpose:	Rabbit IgG polyclonal antibody for Histone acetyltransferase p300(EP300) detection. Tested with WB, IHC-P in Human,Mouse,Rat.
Immunogen:	E.coli-derived human KAT3B recombinant protein (Position: L2065-H2414). Human KAT3B shares 94% amino acid (aa) sequence identity with mouse KAT3B.
Isotype:	IgG
Cross-Reactivity (Details):	No cross reactivity with other proteins.
Characteristics:	Rabbit IgG polyclonal antibody for Histone acetyltransferase p300(EP300) detection. Tested with WB, IHC-P in Human,Mouse,Rat.  Gene Name: E1A binding protein p300 Protein Name: Histone acetyltransferase p300
Purification:	Immunogen affinity purified.

## Target Details

Target:	p300 (EP300)
Alternative Name:	EP300 ( <a href="#">EP300 Products</a> )
Background:	<p>E1A binding protein p300 also known as EP300 or p300 is a protein that in humans is encoded by the EP300 gene. The EP300 gene is located on the long (q) arm of the human chromosome 22 at position 13.2. This protein regulates the activity of many genes in tissues throughout the body. It plays an essential role in regulating cell growth and division, prompting cells to mature and assume specialized functions (differentiate), and preventing the growth of cancerous tumors. The EP300 protein appears to be critical for normal development before and after birth. It carries out its function by activating transcription. In addition, the protein functions as histone acetyltransferase that regulates transcription via chromatin remodeling, and is important in the processes of cell proliferation and differentiation. EP300 also mediates cAMP-gene regulation by binding specifically to phosphorylated CREB protein.</p> <p>Synonyms: CREBBP/EP300 inhibitory protein 1 antibody Cyclic AMP responsive enhancer binding protein antibody E1A associated protein p300 antibody E1A binding protein p300 antibody E1A-associated protein p300 antibody EC 2.3.1.48 antibody EP300 antibody EP300: E1A binding protein p300 antibody EP300_HUMAN antibody Histone acetyltransferase p300 antibody KAT3B antibody p300 HAT antibody RB and P300 binding protein EID 1 antibody Retinoblastoma protein associated protein antibody RSTS2 antibody</p>
Gene ID:	2033
UniProt:	<a href="#">Q09472</a>
Pathways:	<a href="#">p53 Signaling</a> , <a href="#">Notch Signaling</a> , <a href="#">Interferon-gamma Pathway</a> , <a href="#">Intracellular Steroid Hormone Receptor Signaling Pathway</a> , <a href="#">Regulation of Intracellular Steroid Hormone Receptor Signaling</a> , <a href="#">Regulation of Lipid Metabolism by PPARalpha</a> , <a href="#">Regulation of Muscle Cell Differentiation</a> , <a href="#">Regulation of Cell Size</a>

## Application Details

Application Notes:	<p>WB: Concentration: 0.1-0.5 µg/mL, Tested Species: Human, The detection limit for KAT3B is approximately 0.25 ng/lane under reducing conditions.</p> <p>IHC-P: Concentration: 0.5-1 µg/mL, Tested Species: Human, Mouse, Rat, Epitope Retrieval by Heat: Boiling the paraffin sections in 10 mM citrate buffer, pH 6.0, for 20 mins is required for the staining of formalin/paraffin sections.</p> <p>Notes: Tested Species: Species with positive results. Other applications have not been tested.</p>
--------------------	---

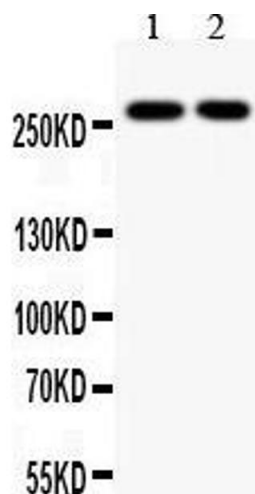
## Application Details

	Optimal dilutions should be determined by end users.
Comment:	Antibody can be supported by chemiluminescence kit ABIN921124 in WB, supported by ABIN921231 in IHC(P).
Restrictions:	For Research Use only

## Handling

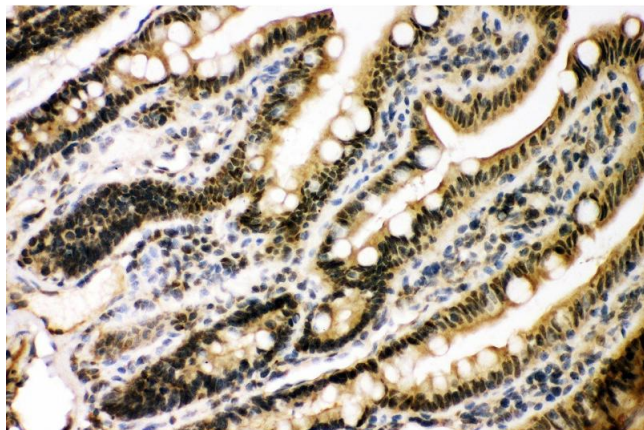
Format:	Lyophilized
Reconstitution:	Add 0.2 mL of distilled water will yield a concentration of 500 µg/mL.
Concentration:	500 µg/mL
Buffer:	Each vial contains 5 mg BSA, 0.9 mg NaCl, 0.2 mg Na <sub>2</sub> HPO <sub>4</sub> , 0.05 mg Sodium azide.
Preservative:	Sodium azide
Precaution of Use:	This product contains Sodium azide: a POISONOUS AND HAZARDOUS SUBSTANCE which should be handled by trained staff only.
Handling Advice:	Avoid repeated freezing and thawing.
Storage:	4 °C/-20 °C
Storage Comment:	At -20°C for one year. After reconstitution, at 4°C for one month. It can also be aliquotted and stored frozen at -20 °C for a longer time. Avoid repeated freezing and thawing.

## Images



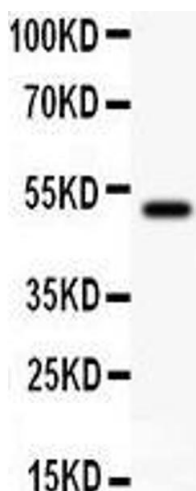
### Western Blotting

Image 1.



#### Immunohistochemistry

**Image 2.** Anti- KAT3B/p300 Picoband antibody, IHC(P)  
IHC(P): Rat Intestine Tissue



#### Western Blotting

**Image 3.** Anti- KAT3B/p300 Picoband antibody, Western blotting All lanes: All lanes: Anti KAT3B/p300 at 0.5ug/ml  
WB: Recombinant Human KAT3B/p300 Protein 0.5ng  
Predicted bind size: 50KD Observed bind size: 50KD

Please check the [product details page](#) for more images. Overall 6 images are available for ABIN3042372.