

Datasheet for ABIN3042373
anti-EPB41L1 antibody (AA 691-881)[Go to Product page](#)

2 Images

Overview

Quantity:	100 µg
Target:	EPB41L1
Binding Specificity:	AA 691-881
Reactivity:	Human, Mouse, Rat
Host:	Rabbit
Clonality:	Polyclonal
Conjugate:	This EPB41L1 antibody is un-conjugated
Application:	Western Blotting (WB)

Product Details

Purpose:	Rabbit IgG polyclonal antibody for Band 4.1-like protein 1(EPB41L1) detection. Tested with WB in Human,Mouse,Rat.
Immunogen:	E.coli-derived human EPB41L1 recombinant protein (Position: Q691-S881). Human EPB41L1 shares 91% amino acid (aa) sequence identity with both mouse and rat EPB41L1.
Isotype:	IgG
Cross-Reactivity (Details):	No cross reactivity with other proteins.
Characteristics:	<p>Rabbit IgG polyclonal antibody for Band 4.1-like protein 1(EPB41L1) detection. Tested with WB in Human,Mouse,Rat.</p> <p>Gene Name: erythrocyte membrane protein band 4.1-like 1</p> <p>Protein Name: Band 4.1-like protein 1</p>
Purification:	Immunogen affinity purified.

Target Details

Target:	EPB41L1
Alternative Name:	EPB41L1 (EPB41L1 Products)
Background:	<p>Band 4.1-like protein 1 is a protein that in humans is encoded by the EPB41L1 gene. This gene is mapped to 20q11.23. It is found that a heterozygous missense mutation in the EPB41L1 gene causing nonsyndromic intellectual disability. This gene may function to confer stability and plasticity to neuronal membrane via multiple interactions, including the spectrin-actin-based cytoskeleton, integral membrane channels and membrane-associated guanylate kinases. What's more, EPB41L1 is a multifunctional protein that mediates interactions between the erythrocyte cytoskeleton and the overlying plasma membrane.</p> <p>Synonyms: 4.1N antibody Band 4.1 like protein 1 antibody Band 4.1-like protein 1 antibody DKFZp686H17242 antibody E41L1_HUMAN antibody EPB41L 1 antibody Epb41l1 antibody Erythrocyte membrane protein band 4.1 like 1 antibody KIAA0338 antibody MGC11072 antibody MRD11 antibody Neuron type nonerythroid protein 4.1 antibody Neuronal protein 4.1 antibody Nonerythroid protein 4.1 antibody Nonerythroid protein 4.1, neuron type antibody OTTHUMP00000030825 antibody OTTHUMP00000030826 antibody OTTHUMP00000030827 antibody OTTHUMP00000030829 antibody</p>
Gene ID:	2036
UniProt:	Q9H4G0

Application Details

Application Notes:	<p>WB: Concentration: 0.1-0.5 µg/mL, Tested Species: Human, Mouse, Rat, The detection limit for EPB41L1 is approximately 0.25 ng/lane under reducing conditions.</p> <p>Notes: Tested Species: Species with positive results.</p> <p>Other applications have not been tested. Optimal dilutions should be determined by end users.</p>
Comment:	Antibody can be supported by chemiluminescence kit ABIN921124 in WB.
Restrictions:	For Research Use only

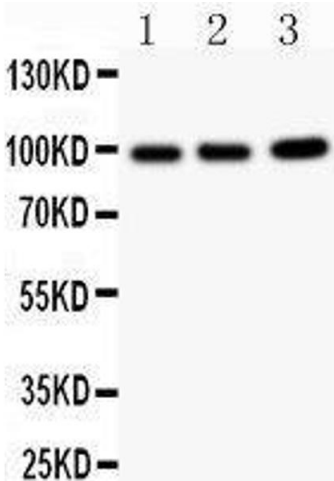
Handling

Format:	Lyophilized
Reconstitution:	Add 0.2 mL of distilled water will yield a concentration of 500 µg/mL.
Concentration:	500 µg/mL

Handling

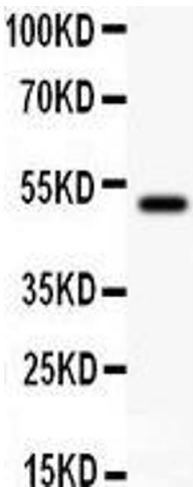
Buffer:	Each vial contains 5 mg BSA, 0.9 mg NaCl, 0.2 mg Na2HPO4, 0.05 mg Sodium azide.
Preservative:	Sodium azide
Precaution of Use:	This product contains Sodium azide: a POISONOUS AND HAZARDOUS SUBSTANCE which should be handled by trained staff only.
Handling Advice:	Avoid repeated freezing and thawing.
Storage:	4 °C/-20 °C
Storage Comment:	At -20°C for one year. After reconstitution, at 4°C for one month. It can also be aliquotted and stored frozen at -20 °C for a longer time. Avoid repeated freezing and thawing.

Validation report #300033 for Immunohistochemistry (IHC)



Western Blotting

Image 1.



Western Blotting

Image 2. Anti- EPB41L1 Picoband antibody, Western blotting All lanes: Anti EPB41L1 at 0.5ug/ml WB: Recombinant Human EPB41L1 Protein 0.5ng Predicted bind size: 50KD Observed bind size: 50KD