

Datasheet for ABIN3042377
anti-ERVW-1 antibody (C-Term)



[Go to Product page](#)

1 Image

Overview

Quantity:	100 µg
Target:	ERVW-1
Binding Specificity:	AA 406-435, C-Term
Reactivity:	Human, Rat, Mouse
Host:	Rabbit
Clonality:	Polyclonal
Conjugate:	This ERVW-1 antibody is un-conjugated
Application:	Western Blotting (WB)

Product Details

Purpose:	Rabbit IgG polyclonal antibody for Syncytin-1(ERVW-1) detection. Tested with WB in Human,Mouse,Rat.
Immunogen:	A synthetic peptide corresponding to a sequence at the C-terminus of human ERVW-1(406-435aa YYVNQSGIVTEKVKEIRDRIQRRAEELRNT).
Sequence:	YYVNQSGIVT EKVKEIRDRI QRRAEELRNT
Isotype:	IgG
Cross-Reactivity (Details):	No cross reactivity with other proteins.
Characteristics:	<p>Rabbit IgG polyclonal antibody for Syncytin-1(ERVW-1) detection. Tested with WB in Human,Mouse,Rat.</p> <p>Gene Name: endogenous retrovirus group W, member 1</p> <p>Protein Name: Syncytin-1</p>

Product Details

Purification: Immunogen affinity purified.

Target Details

Target: ERVW-1

Alternative Name: ERVW-1 ([ERVW-1 Products](#))

Background: ERVW-1 is also known as ERVWE1. The human ERVWE1 locus is derived from a human endogenous retrovirus-W (HERV-W) provirus located on chromosome 7. This provirus has inactivating mutations in the gag and pol genes, but the envelope glycoprotein gene has been selectively preserved. The product of this gene, syncytin, is expressed in the placental syncytiotrophoblast and is involved in fusion of the cytotrophoblast cells to form the syncytial layer of the placenta. The protein has the characteristics of a typical retroviral envelope protein, including a furin cleavage site that separates the surface (SU) and transmembrane (TM) proteins which form a heterodimer.

Synonyms: Endogenous retrovirus group W member 1 antibody|ENV antibody|Envelope polyprotein gPr73 antibody|Enverin antibody|ENVW antibody|ERVWE1 antibody|HERV-7q antibody|HERV-7q Envelope protein antibody|HERV-W envelope protein antibody|HERV-W-ENV antibody|HERV-W_7q21.2 provirus ancestral Env polyprotein antibody|HERV7Q antibody|HERVW antibody|HERVWENV antibody|Syncytin 1 antibody|Syncytin antibody|Syncytin1 antibody

Gene ID: 30816

Application Details

Application Notes: WB: Concentration: 0.1-0.5 µg/mL, Tested Species: Human, Mouse, Rat
Notes: Tested Species: Species with positive results.
Other applications have not been tested. Optimal dilutions should be determined by end users.

Comment: Antibody can be supported by chemiluminescence kit ABIN921124 in WB.

Restrictions: For Research Use only

Handling

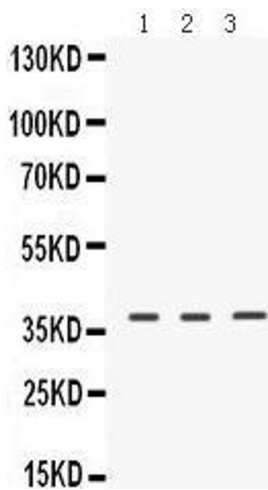
Format: Lyophilized

Reconstitution: Add 0.2 mL of distilled water will yield a concentration of 500 µg/mL.

Handling

Concentration:	500 µg/mL
Buffer:	Each vial contains 5 mg BSA, 0.9 mg NaCl, 0.2 mg Na2HPO4, 0.05 mg Sodium azide.
Preservative:	Sodium azide
Precaution of Use:	This product contains Sodium azide: a POISONOUS AND HAZARDOUS SUBSTANCE which should be handled by trained staff only.
Handling Advice:	Avoid repeated freezing and thawing.
Storage:	4 °C/-20 °C
Storage Comment:	At -20°C for one year. After reconstitution, at 4°C for one month. It can also be aliquotted and stored frozen at -20 °C for a longer time. Avoid repeated freezing and thawing.

Images



Western Blotting

Image 1.