

Datasheet for ABIN3042388
anti-CD20 antibody (AA 1-261)



[Go to Product page](#)

4 Images

2 Publications

Overview

Quantity:	100 µg
Target:	CD20 (MS4A1)
Binding Specificity:	AA 1-261
Reactivity:	Human
Host:	Rabbit
Clonality:	Polyclonal
Conjugate:	This CD20 antibody is un-conjugated
Application:	Flow Cytometry (FACS), Western Blotting (WB), Immunohistochemistry (Paraffin-embedded Sections) (IHC (p))

Product Details

Purpose:	Rabbit IgG polyclonal antibody for B-lymphocyte antigen CD20(MS4A1) detection. Tested with WB, IHC-P, FCM in Human.
Immunogen:	E.coli-derived human CD20 recombinant protein (Position: M1-D261). Human CD20 shares 75% amino acid (aa) sequence identity with mouse CD20.
Isotype:	IgG
Cross-Reactivity (Details):	No cross reactivity with other proteins.
Characteristics:	Rabbit IgG polyclonal antibody for B-lymphocyte antigen CD20(MS4A1) detection. Tested with WB, IHC-P, FCM in Human. Gene Name: membrane-spanning 4-domains, subfamily A, member 1 Protein Name: B-lymphocyte antigen CD20

Product Details

Purification: Immunogen affinity purified.

Target Details

Target: CD20 (MS4A1)

Alternative Name: MS4A1 ([MS4A1 Products](#))

Background: CD20, also known as MS4A1, is an activated-glycosylated phosphoprotein expressed on the surface of all B-cells beginning at the pro-B phase (CD45R+, CD117+) and progressively increasing in concentration until maturity. It is mapped to 11q12.2. This gene encodes a member of the membrane-spanning 4A gene family. The function of CD20 is to enable optimal B-cell immune response, specifically against T-independent antigens. It is suspected that CD20 acts as a calcium channel in the cell membrane. What's more, this protein may be involved in the regulation of B-cell activation and proliferation.

Synonyms: APY antibody|ATOPY antibody|B lymphocyte antigen CD20 antibody|B Lymphocyte Cell Surface Antigen B1 antibody|B-lymphocyte antigen CD20 antibody|B-lymphocyte cell-surface antigen B1 antibody|B-lymphocyte surface antigen B1 antibody|B1 antibody|Bp 35 antibody|Bp35 antibody|CD 20 antibody|CD20 antibody|CD20 antigen antibody|CD20 receptor antibody|CD20_HUMAN antibody|Fc epsilon receptor I beta chain antibody|Fc Fragment of IgE high affinity I receptor for beta polypeptide antibody|FCER1B antibody|FCERI antibody|High affinity immunoglobulin epsilon receptor subunit beta antibody|IgE Fc receptor subunit beta antibody|IGEL antibody|IGER antibody|IGHER antibody|LEU16 antibody|LEU16 antibody|leukocyte surface antigen Leu 16 antibody|Leukocyte surface antigen Leu-16 antibody|Ly44 antibody|Membrane spanning 4 domains subfamily A member 2 antibody|Membrane-spanning 4-domains subfamily A member 1 antibody|MS4A1 antibody

Gene ID: 931

UniProt: [P11836](#)

Application Details

Application Notes: WB: Concentration: 0.1-0.5 µg/mL, Tested Species: Human, The detection limit for CD20 is approximately 0.25 ng/lane under reducing conditions.
IHC-P: Concentration: 0.5-1 µg/mL, Tested Species: Human, Epitope Retrieval by Heat: Boiling the paraffin sections in 10 mM citrate buffer, pH 6.0, for 20 mins is required for the staining of formalin/paraffin sections.

Application Details

Flow Cytometry: Concentration:1-3 µg/1x10⁶ cells, Tested Species: Human

Notes: Tested Species: Species with positive results. Other applications have not been tested.

Optimal dilutions should be determined by end users.

Comment: Antibody can be supported by chemiluminescence kit ABIN921124 in WB, supported by ABIN921231 in IHC(P).

Restrictions: For Research Use only

Handling

Format: Lyophilized

Reconstitution: Add 0.2 mL of distilled water will yield a concentration of 500 µg/mL.

Concentration: 500 µg/mL

Buffer: Each vial contains 5 mg BSA, 0.9 mg NaCl, 0.2 mg Na₂HPO₄, 0.05 mg Sodium azide.

Preservative: Sodium azide

Precaution of Use: This product contains Sodium azide: a POISONOUS AND HAZARDOUS SUBSTANCE which should be handled by trained staff only.

Handling Advice: Avoid repeated freezing and thawing.

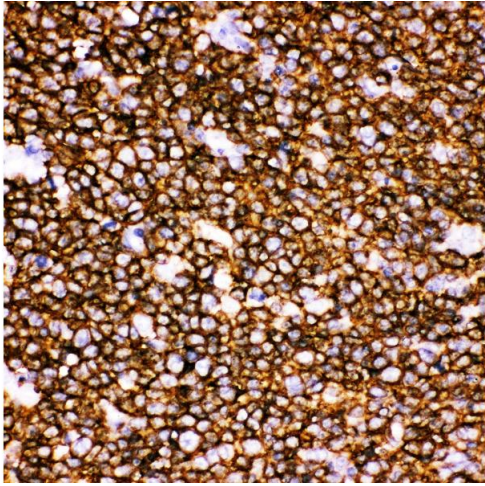
Storage: 4 °C/-20 °C

Storage Comment: At -20°C for one year. After reconstitution, at 4°C for one month.
It can also be aliquotted and stored frozen at -20 °C for a longer time. Avoid repeated freezing and thawing.

Publications

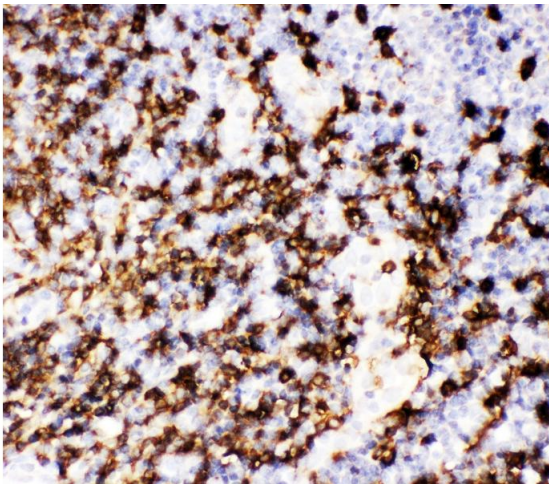
Product cited in: Ni, Chen, Zeng, Pei, Du, Tang, Wang, Hu, Zhu, He, Wei, Wang, Ning, Wang, Wang, Ma, Chen, Sun, Tang, Wang, Wang: "In-cell infection: a novel pathway for Epstein-Barr virus infection mediated by cell-in-cell structures." in: **Cell research**, Vol. 25, Issue 7, pp. 785-800, (2016) ([PubMed](#)).

Yan, Fan, Bai, Hou, Li, Tong: "Zinc Prevents Abdominal Aortic Aneurysm Formation by Induction of A20-Mediated Suppression of NF-κB Pathway." in: **PLoS ONE**, Vol. 11, Issue 2, pp. e0148536, (2016) ([PubMed](#)).



Immunohistochemistry

Image 1. Anti-CD20 Picoband antibody, IHC(P): Human Tonsil Tissue



Immunohistochemistry

Image 2. Anti-CD20 Picoband antibody, IHC(P): Human Tonsil Tissue



Western Blotting

Image 3. Western blot analysis of CD20 using anti-CD20 antibody . Electrophoresis was performed on a 5-20% SDS-PAGE gel at 70V (Stacking gel) / 90V (Resolving gel) for 2-3 hours. The sample well of each Lane was loaded with 50ug of sample under reducing conditions. Lane 1: RAJI Whole Cell Lysate Lane 2: CEM Whole Cell Lysate After Electrophoresis, proteins were transferred to a Nitrocellulose membrane at 150mA for 50-90 minutes. Blocked the membrane with 5% Non-fat Milk/ TBS for 1.5 hour at RT. The membrane was incubated with rabbit anti-CD20 antigen affinity purified polyclonal antibody (Catalog #) at 0.5 µg/mL overnight at 4°C, then washed with TBS-0.1%Tween 3 times with 5 minutes each and probed with a goat anti-rabbit IgG-HRP secondary antibody at a dilution of

1:10000 for 1.5 hour at RT. The signal is developed using an Enhanced Chemiluminescent detection (ECL) kit (Catalog # EK1002) with Tanon 5200 system. A specific band was detected for CD20 at approximately 33KD. The expected band size for CD20 is at 33KD.

Please check the [product details page](#) for more images. Overall 4 images are available for ABIN3042388.