

Datasheet for ABIN3042391
anti-FGFR4 antibody (AA 22-206)

3 Images

[Go to Product page](#)

Overview

Quantity:	100 µg
Target:	FGFR4
Binding Specificity:	AA 22-206
Reactivity:	Human
Host:	Rabbit
Clonality:	Polyclonal
Conjugate:	This FGFR4 antibody is un-conjugated
Application:	Western Blotting (WB), Immunohistochemistry (Paraffin-embedded Sections) (IHC (p))

Product Details

Purpose:	Rabbit IgG polyclonal antibody for Fibroblast growth factor receptor 4(FGFR4) detection. Tested with WB, IHC-P in Human.
Immunogen:	E.coli-derived human FGFR4 recombinant protein (Position: L22-H206). Human FGFR4 shares 86% and 84% amino acid (aa) sequences identity with mouse and rat FGFR4, respectively.
Isotype:	IgG
Cross-Reactivity (Details):	No cross reactivity with other proteins.
Characteristics:	Rabbit IgG polyclonal antibody for Fibroblast growth factor receptor 4(FGFR4) detection. Tested with WB, IHC-P in Human. Gene Name: fibroblast growth factor receptor 4 Protein Name: Fibroblast growth factor receptor 4
Purification:	Immunogen affinity purified.

Target Details

Target:	FGFR4
Alternative Name:	FGFR4 (FGFR4 Products)
Background:	<p>FGFR4(Fibroblast growth factor receptor 4), also known as CD334, is a protein that in humans is encoded by the FGFR4 gene. It is mapped to 5q35.2. The protein encoded by this gene is a member of the fibroblast growth factor receptor family, where amino acid sequence is highly conserved between members and throughout evolution. The extracellular portion of the protein interacts with fibroblast growth factors, setting in motion a cascade of downstream signals, ultimately influencing mitogenesis and differentiation. It is overexpressed in gynecological tumor samples, suggesting a role in breast and ovarian tumorigenesis.</p> <p>Synonyms: CD 334 antibody CD334 antibody CD334 antigen antibody fc13h 10 antibody fc13h10 antibody Fgfr 4 antibody FGFR-4 antibody Fgfr4 antibody FGFR4_HUMAN antibody Fibroblast growth factor receptor 4 antibody Hydroxyaryl protein kinase antibody JTK 2 antibody JTK2 antibody MGC20292 antibody Protein tyrosine kinase antibody TKF antibody Tyrosine kinase related to fibroblast growth factor receptor antibody Tyrosyl protein kinase antibody</p>
Gene ID:	2264
UniProt:	P22455
Pathways:	RTK Signaling , Fc-epsilon Receptor Signaling Pathway , EGFR Signaling Pathway , Neurotrophin Signaling Pathway , Carbohydrate Homeostasis , Growth Factor Binding

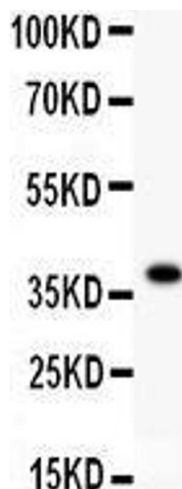
Application Details

Application Notes:	<p>WB: Concentration: 0.1-0.5 µg/mL, Tested Species: Human, The detection limit for FGFR4 is approximately 0.25 ng/lane under reducing conditions.</p> <p>IHC-P: Concentration: 0.5-1 µg/mL, Tested Species: Human, Epitope Retrieval by Heat: Boiling the paraffin sections in 10 mM citrate buffer, pH 6.0, for 20 mins is required for the staining of formalin/paraffin sections.</p> <p>Notes: Tested Species: Species with positive results. Other applications have not been tested. Optimal dilutions should be determined by end users.</p>
Comment:	Antibody can be supported by chemiluminescence kit ABIN921124 in WB, supported by ABIN921231 in IHC(P).
Restrictions:	For Research Use only

Handling

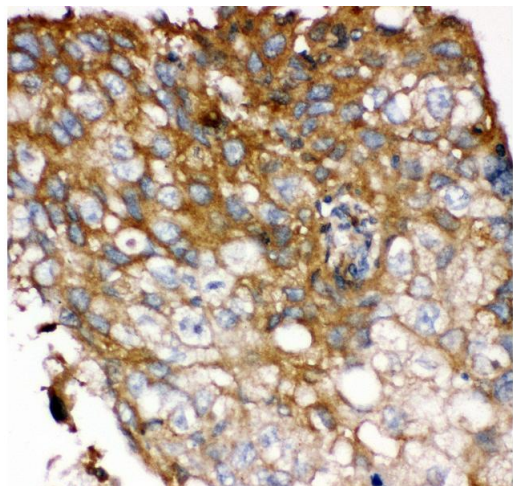
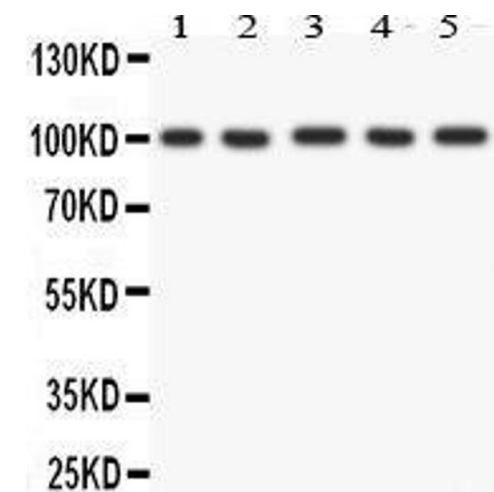
Format:	Lyophilized
Reconstitution:	Add 0.2 mL of distilled water will yield a concentration of 500 µg/mL.
Concentration:	500 µg/mL
Buffer:	Each vial contains 5 mg BSA, 0.9 mg NaCl, 0.2 mg Na ₂ HPO ₄ , 0.05 mg Sodium azide.
Preservative:	Sodium azide
Precaution of Use:	This product contains Sodium azide: a POISONOUS AND HAZARDOUS SUBSTANCE which should be handled by trained staff only.
Handling Advice:	Avoid repeated freezing and thawing.
Storage:	4 °C/-20 °C
Storage Comment:	At -20°C for one year. After reconstitution, at 4°C for one month. It can also be aliquotted and stored frozen at -20 °C for a longer time. Avoid repeated freezing and thawing.

Images



Western Blotting

Image 1. Anti- FGFR4 antibody, Western blotting All lanes:
Anti FGFR4 at 0.5ug/ml WB: Recombinant Human FGFR4
Protein 0.5ng Predicted bind size: 39KD Observed bind size:
39KD



Western Blotting

Image 2. Anti- FGFR4 antibody, Western blotting All lanes: Anti FGFR4 at 0.5ug/ml Lane 1: HELA Whole Cell Lysate at 40ug Lane 2: PANC Whole Cell Lysate at 40ug Lane 3: SGC Whole Cell Lysate at 40ug Lane 4: COLO320 Whole Cell Lysate at 40ug Lane 5: SW620 Whole Cell Lysate at 40ug Predicted bind size: 88KD Observed bind size: 100KD

Immunohistochemistry (Paraffin-embedded Sections)

Image 3.