

Datasheet for ABIN3042402  
**anti-FOXM1 antibody (AA 411-763)**



[Go to Product page](#)

2 Images

## Overview

Quantity:	100 µg
Target:	FOXM1
Binding Specificity:	AA 411-763
Reactivity:	Human
Host:	Rabbit
Clonality:	Polyclonal
Conjugate:	This FOXM1 antibody is un-conjugated
Application:	Western Blotting (WB)

## Product Details

Purpose:	Rabbit IgG polyclonal antibody for Forkhead box protein M1(FOXM1) detection. Tested with WB in Human.
Immunogen:	E.coli-derived human FOXM1 recombinant protein (Position: A411-Q763). Human FOXM1 shares 75% and 76% amino acid (aa) sequences identity with mouse and rat FOXM1, respectively.
Isotype:	IgG
Cross-Reactivity (Details):	No cross reactivity with other proteins.
Characteristics:	<p>Rabbit IgG polyclonal antibody for Forkhead box protein M1(FOXM1) detection. Tested with WB in Human.</p> <p>Gene Name: forkhead box M1</p> <p>Protein Name: Forkhead box protein M1</p>

## Product Details

Purification: Immunogen affinity purified.

## Target Details

Target: FOXM1

Alternative Name: FOXM1 ([FOXM1 Products](#))

Background: Forkhead box protein M1, also called FOXM1, is a protein that in humans is encoded by the FOXM1 gene. It is mapped to 12p13.33. The protein encoded by this gene is a member of the FOX family of transcription factors. FOXM1 is known to play a key role in cell cycle progression where endogenous FOXM1 expression peaks at S and G2/M phases and also in the control of cell proliferation. FOXM1 gene is now known as a human proto-oncogene. Abnormal upregulation of FOXM1 is involved in the oncogenesis of basal cell carcinoma, the most common human cancer worldwide. It was hypothesized that FOXM1 induces cancer initiation through stem/progenitor cell expansion. What's more, FOXM1 has been shown to modulate the epigenome. It was found that overexpression of FOXM1 "brain washes" normal cells to adopt cancer-like epigenome.

Synonyms: FKHL16 antibody|Forkhead box M1 antibody|Forkhead box protein M1 antibody|forkhead like 16 antibody|Forkhead-related protein FKHL16 antibody|FOX M1 antibody|Foxm1 antibody|FOXM1\_HUMAN antibody|FOXM1B antibody|Hepatocyte nuclear factor 3 forkhead homolog 11 antibody|HFN-11 antibody|HFN11 antibody|HNF-3/fork-head homolog 11 antibody|HNF3 antibody|INS1 antibody|M phase phosphoprotein 2 antibody|M-phase phosphoprotein 2 antibody|MPHOSPH2 antibody|MPM 2 antibody|MPM-2 reactive phosphoprotein 2 antibody|MPM2 reactive phosphoprotein 2 antibody|MPM2 antibody|PIG29 antibody|TGT3 antibody|Transcription factor Trident antibody|Trident antibody|WIN antibody|Winged-helix factor from INS-1 cells antibody|Winged-helix factor from INS1 cells antibody

Gene ID: 2305

UniProt: [Q08050](#)

Pathways: [Positive Regulation of Response to DNA Damage Stimulus](#)

## Application Details

Application Notes: WB: Concentration: 0.1-0.5 µg/mL, Tested Species: Human, The detection limit for FOXM1 is approximately 0.25 ng/lane under reducing conditions.

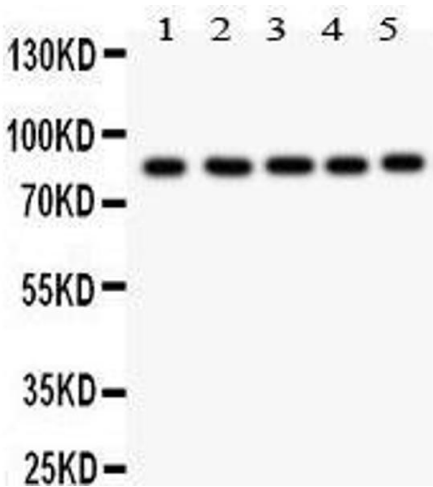
Application Details

	Notes: Tested Species: Species with positive results. Other applications have not been tested. Optimal dilutions should be determined by end users.
Comment:	Antibody can be supported by chemiluminescence kit ABIN921124 in WB.
Restrictions:	For Research Use only

Handling

Format:	Lyophilized
Reconstitution:	Add 0.2 mL of distilled water will yield a concentration of 500 µg/mL.
Concentration:	500 µg/mL
Buffer:	Each vial contains 5 mg BSA, 0.9 mg NaCl, 0.2 mg Na2HPO4, 0.05 mg Sodium azide.
Preservative:	Sodium azide
Precaution of Use:	This product contains Sodium azide: a POISONOUS AND HAZARDOUS SUBSTANCE which should be handled by trained staff only.
Handling Advice:	Avoid repeated freezing and thawing.
Storage:	4 °C/-20 °C
Storage Comment:	At -20°C for one year. After reconstitution, at 4°C for one month. It can also be aliquotted and stored frozen at -20 °C for a longer time. Avoid repeated freezing and thawing.

Images



**Western Blotting**

**Image 1.** Anti- FOXM1 antibody, Western blotting All lanes: Anti FOXM1 at 0.5ug/ml Lane 1: HELA Whole Cell Lysate at 40ug Lane 2: COLO320 Whole Cell Lysate at 40ug Lane 3: SW620 Whole Cell Lysate at 40ug Lane 4: SKOV Whole Cell Lysate at 40ug Lane 5: MCD-7 Whole Cell Lysate at 40ug Predicted bind size: 84KD Observed bind size: 84KD



Western Blotting

**Image 2.** Anti- FOXM1 antibody, Western blotting All lanes:  
Anti FOXM1 at 0.5ug/ml WB: Recombinant Human FOXM1  
Protein 0.5ng Predicted bind size: 36KD Observed bind size:  
36KD