



[Go to Product page](#)

Datasheet for ABIN3042408  
**anti-FSHB antibody (AA 19-129)**

3 Images

Overview

Quantity:	100 µg
Target:	FSHB
Binding Specificity:	AA 19-129
Reactivity:	Human, Mouse
Host:	Rabbit
Clonality:	Polyclonal
Conjugate:	This FSHB antibody is un-conjugated
Application:	Western Blotting (WB), Immunohistochemistry (Paraffin-embedded Sections) (IHC (p))

Product Details

Purpose:	Rabbit IgG polyclonal antibody for Follitropin subunit beta(FSHB) detection. Tested with WB, IHC-P in Human,Mouse.
Immunogen:	E.coli-derived human FSH beta recombinant protein (Position: N19-E129). Human FSH beta shares 90% and 89% amino acid (aa) sequences identity with mouse and rat FSH beta, respectively.
Isotype:	IgG
Cross-Reactivity (Details):	No cross reactivity with other proteins.
Characteristics:	Rabbit IgG polyclonal antibody for Follitropin subunit beta(FSHB) detection. Tested with WB, IHC-P in Human,Mouse. Gene Name: follicle stimulating hormone, beta polypeptide Protein Name: Follitropin subunit beta

## Product Details

---

Purification: Immunogen affinity purified.

## Target Details

---

Target: FSHB

Alternative Name: FSHB ([FSHB Products](#))

Background: FSHB, also known as Follitropin subunit beta, is a protein that in humans is encoded by the FSHB gene, and this gene is mapped to 11p14.1. FSHB enables ovarian folliculogenesis to the antral follicle stage and is essential for Sertoli cell proliferation and maintenance of sperm quality in the testis. It can stimulate development of follicle and spermatogenesis in the reproductive organs. This gene encodes the beta subunit of follicle-stimulating hormone. In conjunction with luteinizing hormone, follicle-stimulating hormone induces egg and sperm production.

Synonyms: Follicle Stimulating Hormone antibody|Follicle Stimulating Hormone antibody|Follicle stimulating hormone beta polypeptide antibody|Follicle stimulating hormone beta polypeptide antibody|Follicle stimulating hormone beta subunit antibody|Follitropin beta chain antibody|Follitropin beta chain precursor antibody|Follitropin subunit beta antibody|FSH B antibody|FSH-B antibody|FSH-beta antibody|FSHB antibody|FSHbeta antibody

Gene ID: 2488

UniProt: [P01225](#)

Pathways: [Peptide Hormone Metabolism](#), [Hormone Activity](#), [C21-Steroid Hormone Metabolic Process](#)

## Application Details

---

Application Notes: WB: Concentration: 0.1-0.5 µg/mL, Tested Species: Human, The detection limit for FSH beta is approximately 0.25 ng/lane under reducing conditions.  
IHC-P: Concentration: 0.5-1 µg/mL, Tested Species: Human, Mouse, Epitope Retrieval by Heat: Boiling the paraffin sections in 10 mM citrate buffer, pH 6.0, for 20 mins is required for the staining of formalin/paraffin sections.  
Notes: Tested Species: Species with positive results. Other applications have not been tested. Optimal dilutions should be determined by end users.

Comment: Antibody can be supported by chemiluminescence kit ABIN921124 in WB, supported by ABIN921231 in IHC(P).

## Application Details

---

Restrictions: For Research Use only

## Handling

---

Format: Lyophilized

Reconstitution: Add 0.2 mL of distilled water will yield a concentration of 500 µg/mL.

Concentration: 500 µg/mL

Buffer: Each vial contains 5 mg BSA, 0.9 mg NaCl, 0.2 mg Na<sub>2</sub>HPO<sub>4</sub>, 0.05 mg Sodium azide.

Preservative: Sodium azide

Precaution of Use: This product contains Sodium azide: a POISONOUS AND HAZARDOUS SUBSTANCE which should be handled by trained staff only.

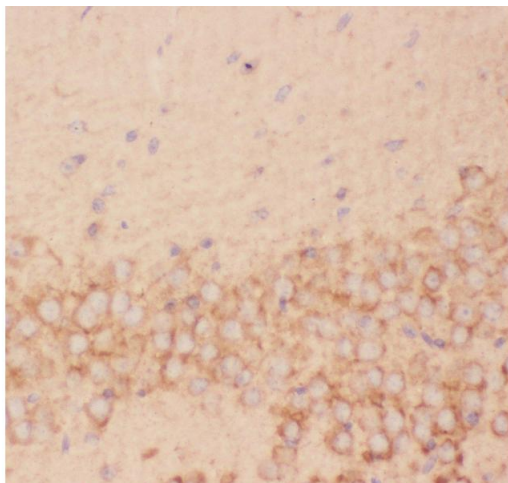
Handling Advice: Avoid repeated freezing and thawing.

Storage: 4 °C/-20 °C

Storage Comment: At -20°C for one year. After reconstitution, at 4°C for one month.  
It can also be aliquotted and stored frozen at -20 °C for a longer time. Avoid repeated freezing and thawing.

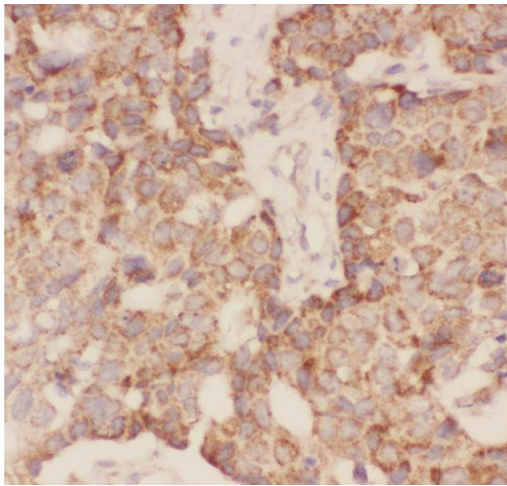
## Images

---



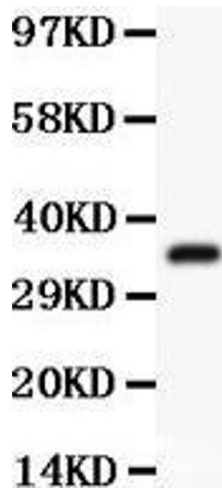
### Immunohistochemistry

**Image 1.** Anti-FSH beta Picoband antibody, IHC(P): Mouse Brain Tissue



### Immunohistochemistry

**Image 2.** Anti-FSH beta Picoband antibody, IHC(P): Human Mammary Cancer Tissue



### Western Blotting

**Image 3.** Anti-FSH beta Picoband antibody, All lanes: Anti FSH beta at 0.5ug/ml WB: Recombinant Human FSH beta Protein 0.5ng Predicted bind size: 36KD Observed bind size: 36KD