

Datasheet for ABIN3042412  
**anti-FZD1 antibody (C-Term)**[Go to Product page](#)

## 2 Images

## Overview

Quantity:	100 µg
Target:	FZD1 (Fzd1)
Binding Specificity:	AA 369-400, C-Term
Reactivity:	Human
Host:	Rabbit
Clonality:	Polyclonal
Conjugate:	This FZD1 antibody is un-conjugated
Application:	Western Blotting (WB), Immunohistochemistry (Paraffin-embedded Sections) (IHC (p))

## Product Details

Purpose:	Rabbit IgG polyclonal antibody for Frizzled-1(FZD1) detection. Tested with WB, IHC-P in Human.
Immunogen:	A synthetic peptide corresponding to a sequence at the C-terminus of human Frizzled homolog 1 (369-400aa YIAGFLLEDRVVCNDKFAEDGARTVAQG TKKE), identical to the related mouse and rat sequences.
Sequence:	YIAGFLLEDR VVCNDKFAED GARTVAQG
Isotype:	IgG
Cross-Reactivity (Details):	No cross reactivity with other proteins.
Characteristics:	Rabbit IgG polyclonal antibody for Frizzled-1(FZD1) detection. Tested with WB, IHC-P in Human.  Gene Name: frizzled class receptor 1 Protein Name: Frizzled-1

## Product Details

Purification: Immunogen affinity purified.

## Target Details

Target: FZD1 (Fzd1)

Alternative Name: FZD1 ([Fzd1 Products](#))

Background: Frizzled-1 (Frizzled homolog 1) is a protein that in humans is encoded by the FZD1 gene. Members of the 'frizzled' gene family encode 7-transmembrane domain proteins that are receptors for Wnt signaling proteins. The FZD1 protein contains a signal peptide, a cysteine-rich domain in the N-terminal extracellular region, 7 transmembrane domains, and a C-terminal PDZ domain-binding motif. The FZD1 transcript is expressed in various tissues.

Synonyms: Chfz-1 antibody|Dfrizzled-1 antibody|DKFZp564G072 antibody|FLJ95923 antibody|Frizzled 1 antibody|Frizzled homolog 1 (Drosophila) antibody|Frizzled homolog 1 antibody|Frizzled-1 antibody|Fz receptor 1 antibody|Fz-1 antibody|Fz1 antibody|FZD1 antibody|FZD1\_HUMAN antibody|FzE1 antibody|hFz1 antibody|Rfz1 antibody|Wnt receptor antibody|Xfrizzled-1 antibody

Gene ID: 8321

Pathways: [WNT Signaling, Asymmetric Protein Localization](#)

## Application Details

Application Notes: WB: Concentration: 0.1-0.6 µg/mL, Tested Species: Human  
IHC-P: Concentration: 0.5-2 µg/mL, Tested Species: Human, Epitope Retrieval by Heat: Boiling the paraffin sections in 10 mM citrate buffer, pH 6.0, for 20 mins is required for the staining of formalin/paraffin sections.  
Notes: Tested Species: Species with positive results. Other applications have not been tested. Optimal dilutions should be determined by end users.

Comment: Antibody can be supported by chemiluminescence kit ABIN921124 in WB, supported by ABIN921231 in IHC(P).

Restrictions: For Research Use only

## Handling

Format: Lyophilized

## Handling

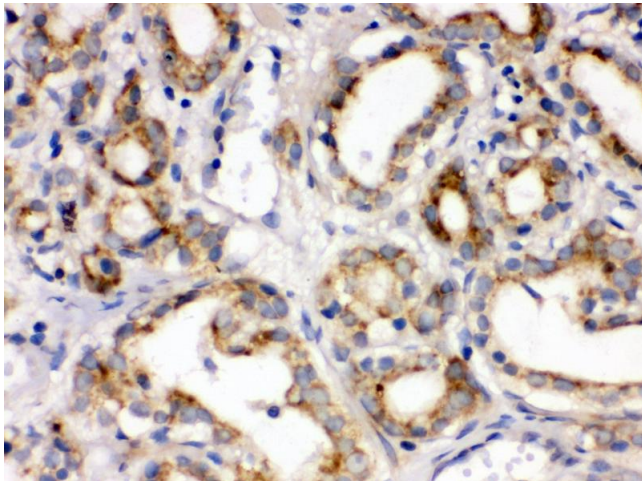
Reconstitution:	Add 0.2 mL of distilled water will yield a concentration of 500 µg/mL.
Concentration:	500 µg/mL
Buffer:	Each vial contains 5 mg BSA, 0.9 mg NaCl, 0.2 mg Na <sub>2</sub> HPO <sub>4</sub> , 0.05 mg Sodium azide.
Preservative:	Sodium azide
Precaution of Use:	This product contains Sodium azide: a POISONOUS AND HAZARDOUS SUBSTANCE which should be handled by trained staff only.
Handling Advice:	Avoid repeated freezing and thawing.
Storage:	4 °C/-20 °C
Storage Comment:	At -20°C for one year. After reconstitution, at 4°C for one month. It can also be aliquotted and stored frozen at -20 °C for a longer time. Avoid repeated freezing and thawing.

## Images



### Western Blotting

**Image 1.** Observed bind size: 71 KDa



### Immunohistochemistry (Paraffin-embedded Sections)

**Image 2.**