

Datasheet for ABIN3042422
anti-GFRA1 antibody (AA 25-227)

3 Images

[Go to Product page](#)

Overview

Quantity:	100 µg
Target:	GFRA1
Binding Specificity:	AA 25-227
Reactivity:	Human
Host:	Rabbit
Clonality:	Polyclonal
Conjugate:	This GFRA1 antibody is un-conjugated
Application:	Western Blotting (WB), Immunohistochemistry (Paraffin-embedded Sections) (IHC (p))

Product Details

Purpose:	Rabbit IgG polyclonal antibody for GDNF family receptor alpha-1(GFRA1) detection. Tested with WB, IHC-P in Human.
Immunogen:	E.coli-derived human GFRA1 recombinant protein (Position: D25-Q227). Human GFRA1 shares 97% amino acid (aa) sequence identity with both mouse and rat GFRA1.
Isotype:	IgG
Cross-Reactivity (Details):	No cross reactivity with other proteins.
Characteristics:	<p>Rabbit IgG polyclonal antibody for GDNF family receptor alpha-1(GFRA1) detection. Tested with WB, IHC-P in Human.</p> <p>Gene Name: GDNF family receptor alpha 1</p> <p>Protein Name: GDNF family receptor alpha-1</p>
Purification:	Immunogen affinity purified.

Target Details

Target:	GFRA1
Alternative Name:	GFRA1 (GFRA1 Products)
Background:	<p>GDNF family receptor alpha-1 (GFRα1), also known as the GDNF receptor or GFRA1, is a protein that in humans is encoded by the GFRA1 gene. It is mapped to chromosome 10q25.3. The protein encoded by this gene is a member of the GDNF receptor family. GFRA1 is released by neuronal cells, Schwann cells, and injured sciatic nerve. It is a glycosylphosphatidylinositol(GPI)-linked cell surface receptor for both GDNF and NTN, and mediates activation of the RET tyrosine kinase receptor. This gene is also a candidate gene for Hirschsprung disease. Soluble GFRA1 mediates robust recruitment of RET to lipid rafts via a mechanism requiring the RET tyrosine kinase.</p> <p>Synonyms: GDNF Family Receptor Alpha 1 antibody GDNF R antibody GDNF RA antibody GDNF receptor alpha antibody GDNFR alpha 1 antibody GDNFR alpha antibody GDNFR antibody GDNFRA antibody GDNFRalpha antibody GFR alpha 1 antibody GFR alpha1 antibody GFR-ALPHA-1 antibody GFRA 1 antibody GFRA1 antibody GFRalpha1 antibody Glial Cell Line DERived Neurotrophic Factor Receptor Alpha antibody Glial cell line-derived neurotrophic factor receptor alpha antibody GPI linked anchor protein antibody GPI-linked anchor protein antibody MGC23045 antibody PI linked cell surface accessory protein antibody RET 1L antibody RET ligand 1 antibody RET1L antibody RETL 1 antibody RETL1 antibody TGF beta related neurotrophic factor receptor 1 antibody TGF-beta related neurotrophic factor receptor 1 antibody TRNR 1 antibody TRNR1 antibody</p>
Gene ID:	14585
UniProt:	P56159

Application Details

Application Notes:	<p>WB: Concentration: 0.1-0.5 μg/mL, Tested Species: Human, The detection limit for GFRA1 is approximately 0.2 ng/lane under reducing conditions.</p> <p>IHC-P: Concentration: 0.5-1 μg/mL, Tested Species: Human, Epitope Retrieval by Heat: Boiling the paraffin sections in 10 mM citrate buffer, pH 6.0, for 20 mins is required for the staining of formalin/paraffin sections.</p> <p>Notes: Tested Species: Species with positive results. Other applications have not been tested. Optimal dilutions should be determined by end users.</p>
Comment:	Antibody can be supported by chemiluminescence kit ABIN921124 in WB, supported by

Application Details

ABIN921231 in IHC(P).

Restrictions: For Research Use only

Handling

Format: Lyophilized

Reconstitution: Add 0.2 mL of distilled water will yield a concentration of 500 µg/mL.

Concentration: 500 µg/mL

Buffer: Each vial contains 5 mg BSA, 0.9 mg NaCl, 0.2 mg Na₂HPO₄, 0.05 mg Sodium azide.

Preservative: Sodium azide

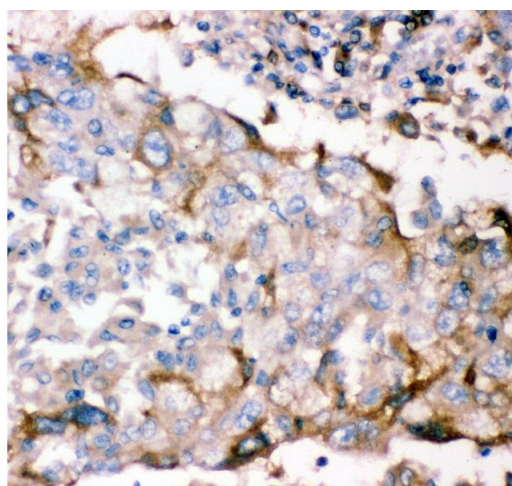
Precaution of Use: This product contains Sodium azide: a POISONOUS AND HAZARDOUS SUBSTANCE which should be handled by trained staff only.

Handling Advice: Avoid repeated freezing and thawing.

Storage: 4 °C/-20 °C

Storage Comment: At -20°C for one year. After reconstitution, at 4°C for one month.
It can also be aliquotted and stored frozen at -20 °C for a longer time. Avoid repeated freezing and thawing.

Images



Immunohistochemistry

Image 1. Anti- GFRA1 antibody, IHC(P) IHC(P): Human Lung Cancer Tissue



Western Blotting

Image 2. Anti- GFRA1 antibody, Western blotting All lanes:
Anti GFRA1 at 0.5ug/ml WB: Recombinant Human GFRA1
Protein 0.5ng Predicted bind size: 39KD Observed bind size:
39KD

Western Blotting

Image 3. Anti- GFRA1 antibody, Western blotting All lanes:
Anti GFRA1 at 0.5ug/ml WB: Human Placenta Tissue Lysate
at 50ug Predicted bind size: 51KD Observed bind size: 51KD