

Datasheet for ABIN3042425 anti-GJC2 antibody (C-Term)



[Go to Product page](#)

1 Image

Overview

Quantity:	100 µg
Target:	GJC2
Binding Specificity:	AA 336-368, C-Term
Reactivity:	Human, Mouse, Rat
Host:	Rabbit
Clonality:	Polyclonal
Conjugate:	This GJC2 antibody is un-conjugated
Application:	Western Blotting (WB)

Product Details

Purpose:	Rabbit IgG polyclonal antibody for Gap junction gamma-2 protein(GJC2) detection. Tested with WB in Human,Mouse,Rat.
Immunogen:	A synthetic peptide corresponding to a sequence at the C-terminus of human GJC2 (336-368aa VVRAAERARAHDQNLNLANLALQALRDGAAAGDRD), different from the related mouse and rat sequences by five amino acids.
Sequence:	VVRAAERARA HDQNLNLANLAL QALRDGAAAG DRD
Isotype:	IgG
Cross-Reactivity (Details):	No cross reactivity with other proteins.
Characteristics:	Rabbit IgG polyclonal antibody for Gap junction gamma-2 protein(GJC2) detection. Tested with WB in Human,Mouse,Rat. Gene Name: gap junction protein, gamma 2, 47 kDa

Product Details

Protein Name: Gap junction gamma-2 protein

Purification: Immunogen affinity purified.

Target Details

Target: GJC2

Alternative Name: GJC2 ([GJC2 Products](#))

Background: Gap junction gamma-2 (GJC2), also known as connexin-46.6 (Cx46.6) and connexin-47 (Cx47) and gap junction alpha-12 (GJA12), is a protein that in humans is encoded by the GJC2 gene. It is mapped to 1q42.13. This gene encodes a gap junction protein. Gap junction proteins are members of a large family of homologous connexins and comprise 4 transmembrane, 2 extracellular, and 3 cytoplasmic domains. This gene plays a key role in central myelination and is involved in peripheral myelination in humans.

Synonyms: B230382L12Rik antibody|Connexin 46.6 antibody|Connexin 47 antibody|Connexin-46.6 antibody|Connexin-47 antibody|Connexin46.6 antibody| Connexin47 antibody|CX 46.6 antibody|Cx 47 antibody|Cx46.6 antibody|Cx47 antibody|CXG2_HUMAN antibody|Gap junction alpha 12 protein antibody|Gap junction alpha-12 protein antibody|Gap junction gamma 2 protein antibody|Gap junction gamma-2 protein antibody|Gap junction protein alpha 12 47 kDa antibody|Gap junction protein gamma 2 47 kDa antibody|GAP JUNCTION PROTEIN, 47-KD antibody|gap junction protein, gamma 12, 47 kDa antibody|gap junction protein, gamma 2, 47 kDa antibody|GJA 12 antibody|GJA12 antibody|GJC 2 antibody|Gjc2 antibody|HLD 2 antibody|HLD2 antibody|LMPH1C antibody|MGC105119 antibody|MGC130506 antibody|OTTHUMP00000037763 antibody|PMLDAR antibody|SPG44 antibody

Gene ID: 57165

UniProt: [Q5T442](#)

Application Details

Application Notes: WB: Concentration: 0.1-0.5 µg/mL, Tested Species: Human, Mouse, Rat
Notes: Tested Species: Species with positive results.
Other applications have not been tested. Optimal dilutions should be determined by end users.

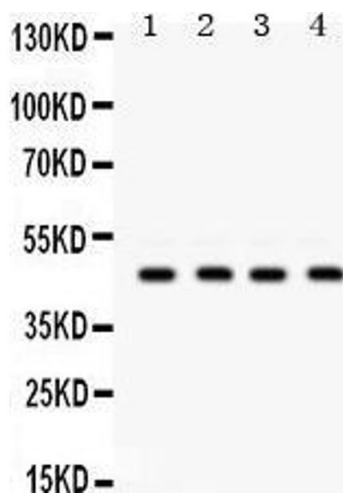
Comment: Antibody can be supported by chemiluminescence kit ABIN921124 in WB.

Restrictions: For Research Use only

Handling

Format:	Lyophilized
Reconstitution:	Add 0.2 mL of distilled water will yield a concentration of 500 µg/mL.
Concentration:	500 µg/mL
Buffer:	Each vial contains 5 mg BSA, 0.9 mg NaCl, 0.2 mg Na2HPO4, 0.05 mg Sodium azide.
Preservative:	Sodium azide
Precaution of Use:	This product contains Sodium azide: a POISONOUS AND HAZARDOUS SUBSTANCE which should be handled by trained staff only.
Handling Advice:	Avoid repeated freezing and thawing.
Storage:	4 °C/-20 °C
Storage Comment:	At -20°C for one year. After reconstitution, at 4°C for one month. It can also be aliquotted and stored frozen at -20 °C for a longer time. Avoid repeated freezing and thawing.

Images



Western Blotting

Image 1.