

Datasheet for ABIN3042434
anti-GRK5 antibody (C-Term)[Go to Product page](#)

4 Images

Overview

Quantity:	100 µg
Target:	GRK5
Binding Specificity:	AA 393-429, C-Term
Reactivity:	Human, Mouse, Rat
Host:	Rabbit
Clonality:	Polyclonal
Conjugate:	This GRK5 antibody is un-conjugated
Application:	Western Blotting (WB), Immunohistochemistry (Paraffin-embedded Sections) (IHC (p))

Product Details

Purpose:	Rabbit IgG polyclonal antibody for G protein-coupled receptor kinase 5 (GRK5) detection. Tested with WB, IHC-P in Human, Rat, Mouse.
Immunogen:	A synthetic peptide corresponding to a sequence at the C-terminus of human GRK5 (393-429aa KREEVDRRVLETTEEYSHKFSEEAKSICKMLLTAK), different from the related mouse and rat sequences by three amino acids.
Sequence:	KREEVDRRVLETTEEYSHKFSEEAKSICKMLLTAK
Isotype:	IgG
Cross-Reactivity (Details):	No cross reactivity with other proteins.
Characteristics:	Rabbit IgG polyclonal antibody for G protein-coupled receptor kinase 5 (GRK5) detection. Tested with WB, IHC-P in Human, Rat, Mouse. Gene Name: G protein-coupled receptor kinase 5

Product Details

Protein Name: G protein-coupled receptor kinase 5

Purification: Immunogen affinity purified.

Target Details

Target: GRK5

Alternative Name: GRK5 ([GRK5 Products](#))

Background: G protein-coupled receptor kinase 5 is an enzyme that in humans is encoded by the GRK5 gene. It is mapped to 10q26.11. This gene encodes a member of the guanine nucleotide-binding protein (G protein)-coupled receptor kinase subfamily of the Ser/Thr protein kinase family. The protein phosphorylates the activated forms of G protein-coupled receptors thus initiating their deactivation. It has also been shown to play a role in regulating the motility of polymorphonuclear leukocytes (PMNs).

Synonyms: FLJ39780 antibody|FP2025 antibody|G protein coupled receptor kinase 5 antibody|G protein coupled receptor kinase GRK5 antibody|G protein-coupled receptor kinase 5 antibody|G protein-coupled receptor kinase GRK5 antibody|GPRK5 antibody|GRK-pan antibody|GRK5 antibody|GRK5_HUMAN antibody|Pan-GRK antibody

Gene ID: 2869

UniProt: [P34947](#)

Pathways: [Myometrial Relaxation and Contraction](#), [Regulation of G-Protein Coupled Receptor Protein Signaling](#)

Application Details

Application Notes: WB: Concentration: 0.1-0.5 µg/mL, Tested Species: Human, Rat
IHC-P: Concentration: 0.5-1 µg/mL, Tested Species: Human, Mouse, Rat, Epitope Retrieval by Heat: Boiling the paraffin sections in 10 mM citrate buffer, pH 6.0, for 20 mins is required for the staining of formalin/paraffin sections.
Notes: Tested Species: Species with positive results. Other applications have not been tested.
Optimal dilutions should be determined by end users.

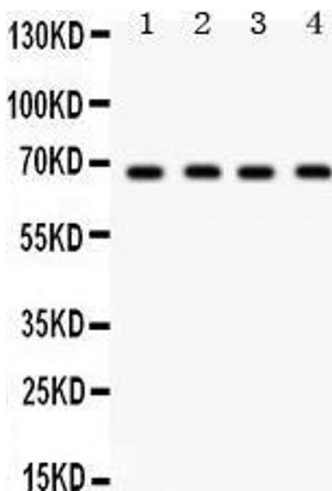
Comment: Antibody can be supported by chemiluminescence kit ABIN921124 in WB, supported by ABIN921231 in IHC(P).

Restrictions: For Research Use only

Handling

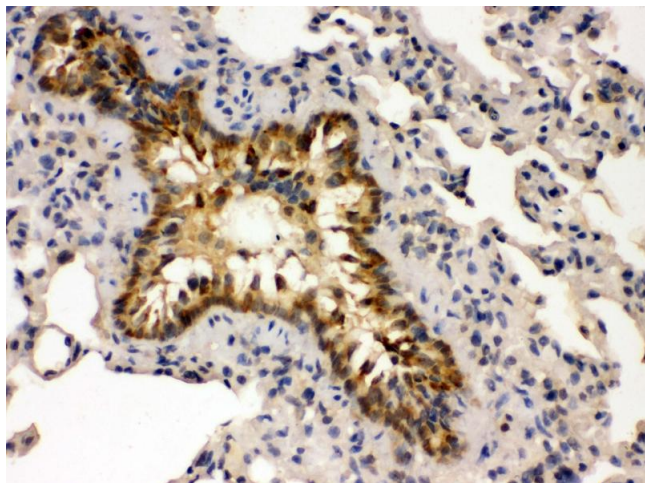
Format:	Lyophilized
Reconstitution:	Add 0.2 mL of distilled water will yield a concentration of 500 µg/mL.
Concentration:	500 µg/mL
Buffer:	Each vial contains 5 mg BSA, 0.9 mg NaCl, 0.2 mg Na ₂ HPO ₄ , 0.05 mg Sodium azide.
Preservative:	Sodium azide
Precaution of Use:	This product contains Sodium azide: a POISONOUS AND HAZARDOUS SUBSTANCE which should be handled by trained staff only.
Handling Advice:	Avoid repeated freezing and thawing.
Storage:	4 °C/-20 °C
Storage Comment:	At -20°C for one year. After reconstitution, at 4°C for one month. It can also be aliquotted and stored frozen at -20 °C for a longer time. Avoid repeated freezing and thawing.

Images



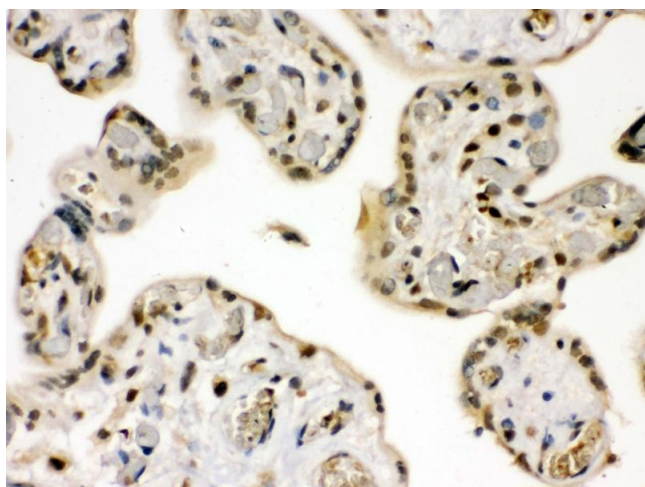
Western Blotting

Image 1.



Immunohistochemistry

Image 2. Anti- GRK5 Picoband antibody,IHC(P) IHC(P):
Mouse Lung Tissue



Immunohistochemistry

Image 3. Anti- GRK5 Picoband antibody,IHC(P) IHC(P):
Human Placenta Tissue

Please check the [product details page](#) for more images. Overall 4 images are available for ABIN3042434.