



[Go to Product page](#)

Datasheet for ABIN3042467

anti-ING1 antibody (Middle Region)

2 Images

Overview

Quantity:	100 µg
Target:	ING1
Binding Specificity:	AA 192-223, Middle Region
Reactivity:	Human
Host:	Rabbit
Clonality:	Polyclonal
Conjugate:	This ING1 antibody is un-conjugated
Application:	Western Blotting (WB)

Product Details

Purpose:	Rabbit IgG polyclonal antibody for Inhibitor of growth protein 1(ING1) detection. Tested with WB in Human.
Immunogen:	A synthetic peptide corresponding to a sequence in the middle region of human ING1 (192-223aa KELDECYERFSRET DGAQKRRMLHCVQRALIR), different from the related mouse sequence by seven amino acids.
Sequence:	KELDECYERF SRET DGAQKR RMLHCVQRAL IR
Isotype:	IgG
Cross-Reactivity (Details):	No cross reactivity with other proteins.
Characteristics:	Rabbit IgG polyclonal antibody for Inhibitor of growth protein 1(ING1) detection. Tested with WB in Human. Gene Name: inhibitor of growth family, member 1

Product Details

Protein Name: Inhibitor of growth protein 1

Purification: Immunogen affinity purified.

Target Details

Target: ING1

Alternative Name: ING1 ([ING1 Products](#))

Background: Inhibitor of growth protein 1 is a protein that in humans is encoded by the ING1 gene. It is mapped to 13q34. This gene encodes a tumor suppressor protein that can induce cell growth arrest and apoptosis. The encoded protein is a nuclear protein that physically interacts with the tumor suppressor protein TP53 and is a component of the p53 signaling pathway. Reduced expression and rearrangement of this gene have been detected in various cancers. Multiple alternatively spliced transcript variants encoding distinct isoforms have been reported.

Synonyms: 2610028J21Rik antibody|AA407184 antibody|AI875420 antibody|Growth inhibitor ING 1 antibody|Growth inhibitor ING1 antibody|Growth inhibitory protein ING 1 antibody|Growth inhibitory protein ING1 antibody|Homo sapiens growth inhibitor p33ING1 (ING1) mRNA, complete cds antibody|ING 1 antibody|Ing1 antibody|ING1_HUMAN antibody|Inhibitor of growth 1 antibody|Inhibitor of growth family member 1 antibody|Inhibitor of growth protein 1 antibody|mING1h antibody|OTTHUMP00000018703 antibody|OTTHUMP00000018704 antibody| OTTHUMP00000018705 antibody|OTTHUMP00000018706 antibody|p24ING1c antibody|p33 antibody|p33 ING1 antibody|p33ING1 antibody|p33ING1b antibody|p33ING1c antibody|p37Ing1b antibody|p47 antibody|p47ING1a antibody|Tumor suppressor ING 1 antibody|Tumor suppressor ING1 antibody

Gene ID: 3621

Pathways: [Protein targeting to Nucleus, Autophagy](#)

Application Details

Application Notes: WB: Concentration: 0.1-0.5 µg/mL, Tested Species: Human
Notes: Tested Species: Species with positive results.
Other applications have not been tested. Optimal dilutions should be determined by end users.

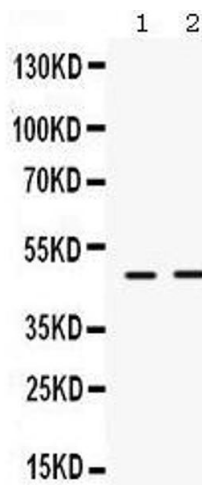
Comment: Antibody can be supported by chemiluminescence kit ABIN921124 in WB.

Restrictions: For Research Use only

Handling

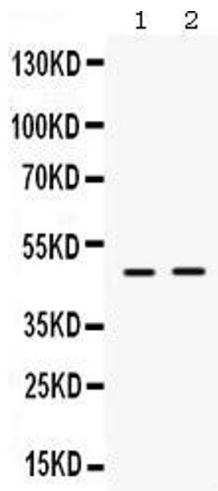
Format:	Lyophilized
Reconstitution:	Add 0.2 mL of distilled water will yield a concentration of 500 µg/mL.
Concentration:	500 µg/mL
Buffer:	Each vial contains 5 mg BSA, 0.9 mg NaCl, 0.2 mg Na ₂ HPO ₄ , 0.05 mg Sodium azide.
Preservative:	Sodium azide
Precaution of Use:	This product contains Sodium azide: a POISONOUS AND HAZARDOUS SUBSTANCE which should be handled by trained staff only.
Handling Advice:	Avoid repeated freezing and thawing.
Storage:	4 °C/-20 °C
Storage Comment:	At -20°C for one year. After reconstitution, at 4°C for one month. It can also be aliquotted and stored frozen at -20 °C for a longer time. Avoid repeated freezing and thawing.

Images



Western Blotting

Image 1.



Western Blotting

Image 2. Anti- ING1 Picoband antibody, Western blottingAll lanes: Anti ING1 at 0.5ug/ml Lane 1: HELA Whole Cell Lysate at 40ug Lane 2: A549 Whole Cell Lysate at 40ug Predicted bind size: 47KD Observed bind size: 47KD