



Datasheet for ABIN3042474
anti-KIN antibody (AA 3-202)



[Go to Product page](#)

2 Images

Overview

Quantity:	100 µg
Target:	KIN
Binding Specificity:	AA 3-202
Reactivity:	Human, Mouse
Host:	Rabbit
Clonality:	Polyclonal
Conjugate:	This KIN antibody is un-conjugated
Application:	Western Blotting (WB), Immunohistochemistry (Paraffin-embedded Sections) (IHC (p))

Product Details

Purpose:	Rabbit IgG polyclonal antibody for DNA/RNA-binding protein KIN17(KIN) detection. Tested with WB, IHC-P in Human,Mouse.
Immunogen:	E.coli-derived human KIN recombinant protein (Position: K3-K202). Human KIN shares 98% amino acid (aa) sequence identity with mouse KIN.
Isotype:	IgG
Cross-Reactivity (Details):	No cross reactivity with other proteins.
Characteristics:	Rabbit IgG polyclonal antibody for DNA/RNA-binding protein KIN17(KIN) detection. Tested with WB, IHC-P in Human,Mouse. Gene Name: KIN, antigenic determinant of recA protein homolog (mouse) Protein Name: DNA/RNA-binding protein KIN17
Purification:	Immunogen affinity purified.

Target Details

Target: KIN

Alternative Name: KIN ([KIN Products](#))

Background: DNA/RNA-binding protein KIN17, also known as BTCD or KIN17, is a protein that in humans is encoded by the KIN gene. This gene is mapped to 10p14. The protein encoded by this gene is a nuclear protein that forms intranuclear foci during proliferation and is redistributed in the nucleoplasm during the cell cycle. Short-wave ultraviolet light provokes the relocalization of the protein, suggesting its participation in the cellular response to DNA damage. Originally selected based on protein-binding with RecA antibodies, the mouse protein presents a limited similarity with a functional domain of the bacterial RecA protein, a characteristic shared by this human ortholog. Alternative splicing of this gene results in multiple transcript variants.

Synonyms: antigenic determinant of recA protein homolog antibody|Binding to curved DNA antibody|BTCD antibody|DNA/RNA-binding protein KIN17 antibody|HsKin17 protein antibody|KIN antibody|KIN antigenic determinant of recA protein homolog mouse antibody|KIN17 antibody|Kin17 protein antibody|KIN17_HUMAN antibody

Gene ID: 22944

UniProt: [O60870](#)

Application Details

Application Notes: WB: Concentration: 0.1-0.5 µg/mL, Tested Species: Human, Mouse
IHC-P: Concentration: 0.5-1 µg/mL, Tested Species: Human, Epitope Retrieval by Heat: Boiling the paraffin sections in 10 mM citrate buffer, pH 6.0, for 20 mins is required for the staining of formalin/paraffin sections.
Notes: Tested Species: Species with positive results. Other applications have not been tested. Optimal dilutions should be determined by end users.

Comment: Antibody can be supported by chemiluminescence kit ABIN921124 in WB, supported by ABIN921231 in IHC(P).

Restrictions: For Research Use only

Handling

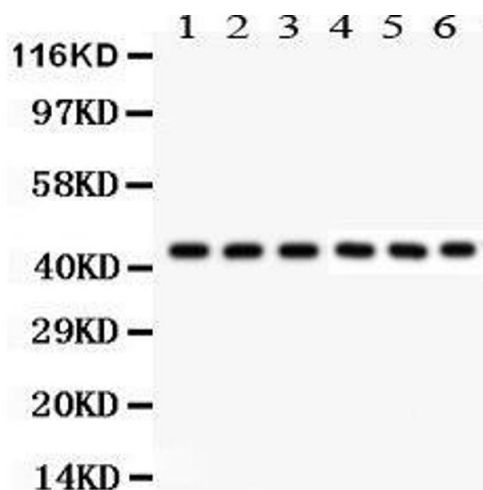
Format: Lyophilized

Reconstitution: Add 0.2 mL of distilled water will yield a concentration of 500 µg/mL.

Handling

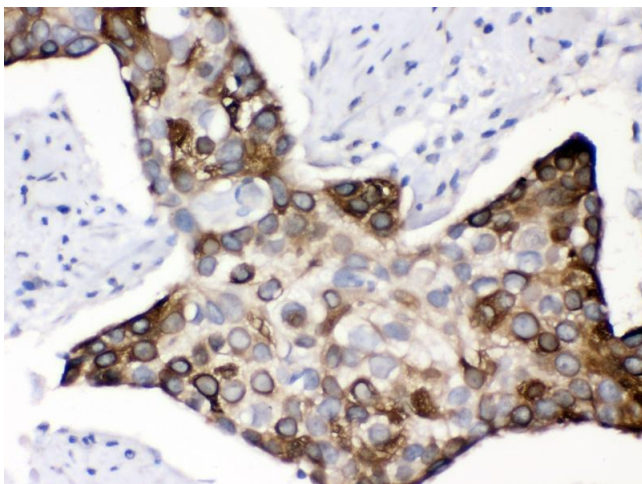
Concentration:	500 µg/mL
Buffer:	Each vial contains 5 mg BSA, 0.9 mg NaCl, 0.2 mg Na ₂ HPO ₄ , 0.05 mg Sodium azide.
Preservative:	Sodium azide
Precaution of Use:	This product contains Sodium azide: a POISONOUS AND HAZARDOUS SUBSTANCE which should be handled by trained staff only.
Handling Advice:	Avoid repeated freezing and thawing.
Storage:	4 °C/-20 °C
Storage Comment:	At -20°C for one year. After reconstitution, at 4°C for one month. It can also be aliquotted and stored frozen at -20 °C for a longer time. Avoid repeated freezing and thawing.

Images



Western Blotting

Image 1.



Immunohistochemistry

Image 2. Anti- KIN Picoband antibody, IHC(P) IHC(P):
Human Oesophagus Squama Cancer Tissue