

Datasheet for ABIN3042481  
**anti-S100A8 antibody (AA 2-89)**



[Go to Product page](#)

**3** Images

## Overview

Quantity:	100 µg
Target:	S100A8
Binding Specificity:	AA 2-89
Reactivity:	Mouse, Rat
Host:	Rabbit
Clonality:	Polyclonal
Conjugate:	This S100A8 antibody is un-conjugated
Application:	Western Blotting (WB), Immunohistochemistry (Paraffin-embedded Sections) (IHC (p))

## Product Details

Purpose:	Rabbit IgG polyclonal antibody for Protein S100-A8(S100A8) detection. Tested with WB, IHC-P in Mouse,Rat.
Immunogen:	E.coli-derived mouse S100A8 recombinant protein (Position: P2-E89). Mouse S100A8 shares 58.6% and 80.5% amino acid (aa) sequence identity with human and rat S100A8, respectively.
Isotype:	IgG
Cross-Reactivity (Details):	No cross reactivity with other proteins.
Characteristics:	<p>Rabbit IgG polyclonal antibody for Protein S100-A8(S100A8) detection. Tested with WB, IHC-P in Mouse,Rat.</p> <p>Gene Name: S100 calcium binding protein A8</p> <p>Protein Name: Protein S100-A8</p>
Purification:	Immunogen affinity purified.

## Target Details

Target:	S100A8
Alternative Name:	S100A8 ( <a href="#">S100A8 Products</a> )
Background:	<p>S100 calcium-binding protein A8 (S100A8) is a protein that in humans is encoded by the S100A8 gene. It is also known as calgranulin A. The protein encoded by this gene is a member of the S100 family of proteins containing 2 EF-hand calcium-binding motifs. S100 proteins are localized in the cytoplasm and/or nucleus of a wide range of cells, and involved in the regulation of a number of cellular processes such as cell cycle progression and differentiation. S100 genes include at least 13 members which are located as a cluster on chromosome 1q21. This protein may function in the inhibition of casein kinase and as a cytokine. Altered expression of this protein is associated with the disease cystic fibrosis.</p> <p>Synonyms: 60B8Ag antibody AI323541 antibody B8Ag antibody BEE11 antibody CAGA antibody Calgranulin-A antibody Calprotectin L1L subunit antibody  Calprotectin, included antibody CFAG antibody CGLA antibody Chemotactic cytokine CP-10 antibody CP-10 antibody Cystic fibrosis antigen antibody L1Ag antibody Leukocyte L1 complex light chain antibody MA387 antibody MIF antibody Migration inhibitory factor-related protein 8 antibody MRP-8 antibody Myeloid-related protein 8 antibody Neutrophil cytosolic 7 kDa protein antibody NIF antibody p8 antibody Pro-inflammatory S100 cytokine antibody Protein S100-A8 antibody S100 calcium binding protein A8 (calgranulin A) antibody  S100 calcium binding protein A8 antibody S100 calcium-binding protein A8 antibody S100A8 antibody S100A8/S100A9 complex, included antibody S10A8_HUMAN antibody Urinary stone protein band A antibody</p>
Gene ID:	20201
UniProt:	<a href="#">P27005</a>
Pathways:	<a href="#">Transition Metal Ion Homeostasis</a> , <a href="#">Positive Regulation of Endopeptidase Activity</a> , <a href="#">S100 Proteins</a>

## Application Details

Application Notes:	<p>WB: Concentration: 0.1-0.5 µg/mL, Tested Species: Mouse</p> <p>IHC-P: Concentration: 0.5-1 µg/mL, Tested Species: Mouse, Rat, Epitope Retrieval by Heat: Boiling the paraffin sections in 10 mM citrate buffer, pH 6.0, for 20 mins is required for the staining of formalin/paraffin sections.</p> <p>Notes: Tested Species: Species with positive results. Other applications have not been tested. Optimal dilutions should be determined by end users.</p>
--------------------	---

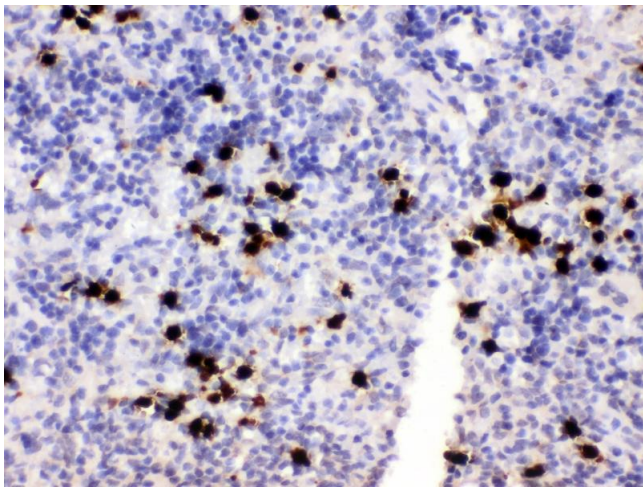
## Application Details

Comment:	Antibody can be supported by chemiluminescence kit ABIN921124 in WB, supported by ABIN921231 in IHC(P).
Restrictions:	For Research Use only

## Handling

Format:	Lyophilized
Reconstitution:	Add 0.2 mL of distilled water will yield a concentration of 500 µg/mL.
Concentration:	500 µg/mL
Buffer:	Each vial contains 5 mg BSA, 0.9 mg NaCl, 0.2 mg Na <sub>2</sub> HPO <sub>4</sub> , 0.05 mg Sodium azide.
Preservative:	Sodium azide
Precaution of Use:	This product contains Sodium azide: a POISONOUS AND HAZARDOUS SUBSTANCE which should be handled by trained staff only.
Handling Advice:	Avoid repeated freezing and thawing.
Storage:	4 °C/-20 °C
Storage Comment:	At -20°C for one year. After reconstitution, at 4°C for one month. It can also be aliquotted and stored frozen at -20 °C for a longer time. Avoid repeated freezing and thawing.

## Images



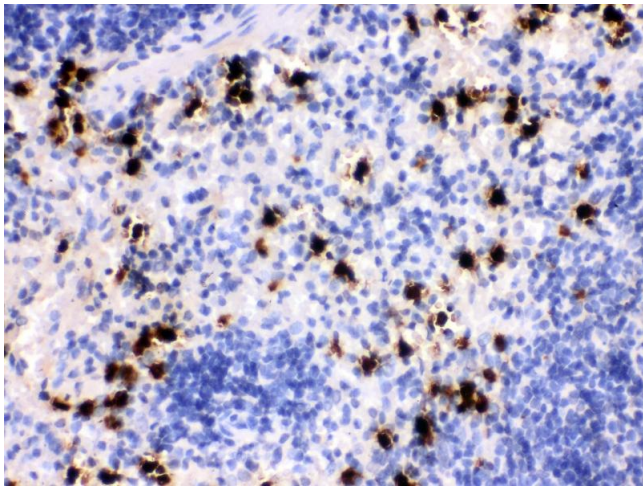
### Immunohistochemistry

**Image 1.** Anti- MRP8 Picoband antibody, IHC(P) IHC(P): Rat Spleen Tissue



**Western Blotting**

**Image 2.** Observed bind size: 19KD



**Immunohistochemistry**

**Image 3.** Anti- MRP8 Picoband antibody, IHC(P) IHC(P):  
Mouse Spleen Tissue