

Datasheet for ABIN3042490  
**anti-SP5 antibody (Middle Region)**[Go to Product page](#)

## 2 Images

## Overview

Quantity:	100 µg
Target:	SP5
Binding Specificity:	AA 246-275, Middle Region
Reactivity:	Human
Host:	Rabbit
Clonality:	Polyclonal
Conjugate:	This SP5 antibody is un-conjugated
Application:	Western Blotting (WB), Immunohistochemistry (Paraffin-embedded Sections) (IHC (p))

## Product Details

Purpose:	Rabbit IgG polyclonal antibody for Transcription factor Sp5(SP5) detection. Tested with WB, IHC-P in Human.
Immunogen:	A synthetic peptide corresponding to a sequence in the middle region of human Sp5 (246-275aa DFAQYQSQIAALLQTKAPLAATARRCRRCR), identical to the related mouse sequence.
Sequence:	DFAQYQSQIA ALLQTKAPLA ATARRCRRCR
Isotype:	IgG
Cross-Reactivity (Details):	No cross reactivity with other proteins.
Characteristics:	Rabbit IgG polyclonal antibody for Transcription factor Sp5(SP5) detection. Tested with WB, IHC-P in Human. Gene Name: Sp5 transcription factor Protein Name: Transcription factor Sp5

## Product Details

Purification: Immunogen affinity purified.

## Target Details

Target: SP5

Alternative Name: SP5 ([SP5 Products](#))

Background: Sp5 is mapped to 2q31.1. It is a member of the Sp family of zinc finger transcription factors. Like other family members, the Sp5 protein contains a Cys2His2 zinc finger DNA binding domain at the C-terminus. Elevated expression of Sp5 has been noted in several human tumors including hepatocellular carcinoma, gastric cancer and colon cancer.

Synonyms: Transcription factor Sp5 antibody

Gene ID: 389058

## Application Details

Application Notes: WB: Concentration: 0.1-0.5 µg/mL, Tested Species: Human, The detection limit for Sp5 is approximately 0.1 ng/lane under reducing conditions.  
IHC-P: Concentration: 0.5-1 µg/mL, Tested Species: Human, Epitope Retrieval by Heat: Boiling the paraffin sections in 10 mM citrate buffer, pH 6.0, for 20 mins is required for the staining of formalin/paraffin sections.  
Notes: Tested Species: Species with positive results. Other applications have not been tested. Optimal dilutions should be determined by end users.

Comment: Antibody can be supported by chemiluminescence kit ABIN921124 in WB, supported by ABIN921231 in IHC(P).

Restrictions: For Research Use only

## Handling

Format: Lyophilized

Reconstitution: Add 0.2 mL of distilled water will yield a concentration of 500 µg/mL.

Concentration: 500 µg/mL

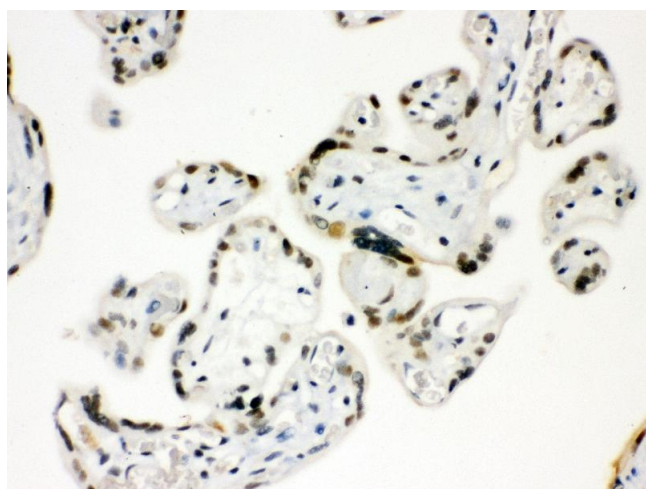
Buffer: Each vial contains 5 mg BSA, 0.9 mg NaCl, 0.2 mg Na2HPO4, 0.05 mg Sodium azide.

Preservative: Sodium azide

## Handling

Precaution of Use:	This product contains Sodium azide: a POISONOUS AND HAZARDOUS SUBSTANCE which should be handled by trained staff only.
Handling Advice:	Avoid repeated freezing and thawing.
Storage:	4 °C/-20 °C
Storage Comment:	At -20°C for one year. After reconstitution, at 4°C for one month. It can also be aliquotted and stored frozen at -20 °C for a longer time. Avoid repeated freezing and thawing.

## Images



### Immunohistochemistry

**Image 1.** Anti- SP5 Picoband antibody, IHC(P) IHC(P):  
Human Placenta Tissue



### Western Blotting

**Image 2.** Anti- SP5 Picoband antibody, Western blotting All  
lanes: Anti SP5 at 0.5ug/ml WB: MCF-7 Whole Cell Lysate at  
40ug Predicted bind size: 42KD Observed bind size: 42KD