



[Go to Product page](#)

Datasheet for ABIN3042492  
**anti-POLH antibody (AA 157-361)**

2 Images

Overview

Quantity:	100 µg
Target:	POLH
Binding Specificity:	AA 157-361
Reactivity:	Human, Rat
Host:	Rabbit
Clonality:	Polyclonal
Conjugate:	This POLH antibody is un-conjugated
Application:	Western Blotting (WB)

Product Details

Purpose:	Rabbit IgG polyclonal antibody for DNA polymerase eta(POLH) detection. Tested with WB in Human,Rat.
Immunogen:	E.coli-derived human POLH recombinant protein (Position: A157-R361). Human POLH shares 93.6% amino acid (aa) sequence identity with mouse POLH.
Isotype:	IgG
Cross-Reactivity (Details):	No cross reactivity with other proteins.
Characteristics:	Rabbit IgG polyclonal antibody for DNA polymerase eta(POLH) detection. Tested with WB in Human,Rat. Gene Name: polymerase (DNA directed), eta Protein Name: DNA polymerase eta
Purification:	Immunogen affinity purified.

## Target Details

---

Target:	POLH
Alternative Name:	<a href="#">POLH (POLH Products)</a>
Background:	<p>DNA polymerase eta (Pol <math>\eta</math>), is a protein that in humans is encoded by the POLH gene. This gene encodes a member of the Y family of specialized DNA polymerases. It copies undamaged DNA with a lower fidelity than other DNA-directed polymerases. However, it accurately replicates UV-damaged DNA, when thymine dimers are present, this polymerase inserts the complementary nucleotides in the newly synthesized DNA, thereby bypassing the lesion and suppressing the mutagenic effect of UV-induced DNA damage. This polymerase is thought to be involved in hypermutation during immunoglobulin class switch recombination. Mutations in this gene result in XPV, a variant type of xeroderma pigmentosum. Several transcript variants encoding different isoforms have been found for this gene.</p> <p>Synonyms: DNA polymerase eta antibody FLJ16395 antibody FLJ21978 antibody Polh antibody POLH_HUMAN antibody polymerase DNA directed eta antibody RAD30 antibody RAD30 homolog A antibody RAD30A antibody Xeroderma pigmentosum variant type protein antibody XP V antibody XPV antibody</p>
Gene ID:	5429
UniProt:	<a href="#">Q9Y253</a>
Pathways:	<a href="#">DNA Damage Repair</a>

## Application Details

---

Application Notes:	<p>WB: Concentration: 0.1-0.5 <math>\mu\text{g}/\text{mL}</math>, Tested Species: Human, Rat</p> <p>Notes: Tested Species: Species with positive results.</p> <p>Other applications have not been tested. Optimal dilutions should be determined by end users.</p>
Comment:	Antibody can be supported by chemiluminescence kit ABIN921124 in WB.
Restrictions:	For Research Use only

## Handling

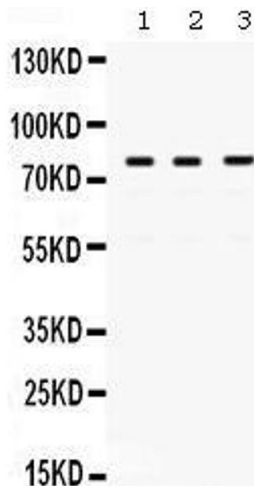
---

Format:	Lyophilized
Reconstitution:	Add 0.2 mL of distilled water will yield a concentration of 500 $\mu\text{g}/\text{mL}$ .
Concentration:	500 $\mu\text{g}/\text{mL}$

## Handling

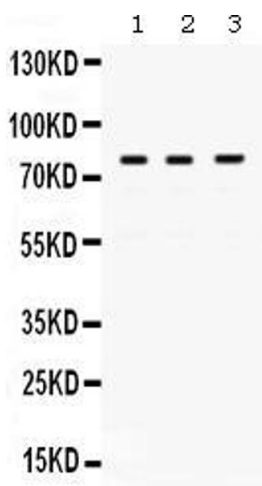
Buffer:	Each vial contains 5 mg BSA, 0.9 mg NaCl, 0.2 mg Na <sub>2</sub> HPO <sub>4</sub> , 0.05 mg Sodium azide.
Preservative:	Sodium azide
Precaution of Use:	This product contains Sodium azide: a POISONOUS AND HAZARDOUS SUBSTANCE which should be handled by trained staff only.
Handling Advice:	Avoid repeated freezing and thawing.
Storage:	4 °C/-20 °C
Storage Comment:	At -20°C for one year. After reconstitution, at 4°C for one month. It can also be aliquotted and stored frozen at -20 °C for a longer time. Avoid repeated freezing and thawing.

## Images



### Western Blotting

Image 1.



### Western Blotting

**Image 2.** Anti- POLH Picoband antibody, Western blottingAll lanes: Anti POLH at 0.5ug/ml Lane 1: Rat Liver Tissue Lysate at 50ug Lane 2: HELA Whole Cell Lysate at 40ug Lane 3: SW620 Whole Cell Lysate at 40ug Predicted bind size: 78KD Observed bind size: 78KD