

Datasheet for ABIN3042505
anti-Lamin B1 antibody (AA 266-583)

11 Images

15 Publications

[Go to Product page](#)

Overview

Quantity:	100 µg
Target:	Lamin B1 (LMNB1)
Binding Specificity:	AA 266-583
Reactivity:	Human, Mouse, Rat
Host:	Rabbit
Clonality:	Polyclonal
Conjugate:	This Lamin B1 antibody is un-conjugated
Application:	Western Blotting (WB), Immunohistochemistry (Paraffin-embedded Sections) (IHC (p))

Product Details

Purpose:	Rabbit IgG polyclonal antibody for Lamin-B1(LMNB1) detection. Tested with WB, IHC-P in Human,Mouse,Rat.
Immunogen:	E.coli-derived human Lamin B1 recombinant protein (Position: Q266-C583). Human Lamin B1 shares 95.9% and 95% amino acid (aa) sequence identity with mouse and rat Lamin B1, respectively.
Isotype:	IgG
Cross-Reactivity (Details):	No cross reactivity with other proteins.
Characteristics:	Rabbit IgG polyclonal antibody for Lamin-B1(LMNB1) detection. Tested with WB, IHC-P in Human,Mouse,Rat. Gene Name: lamin B1 Protein Name: Lamin-B1

Product Details

Purification: Immunogen affinity purified.

Target Details

Target: Lamin B1 (LMNB1)

Alternative Name: LMNB1 ([LMNB1 Products](#))

Background: Lamin-B1 is a protein that in humans is encoded by the LMNB1 gene. The nuclear lamina consists of a two-dimensional matrix of proteins located next to the inner nuclear membrane. The lamin family of proteins make up the matrix and are highly conserved in evolution. During mitosis, the lamina matrix is reversibly disassembled as the lamin proteins are phosphorylated. Lamin proteins are thought to be involved in nuclear stability, chromatin structure and gene expression. Vertebrate lamins consist of two types, A and B. This gene encodes one of the two B type proteins, B1.

Synonyms: ADLD antibody|lamin B1 antibody|Lamin-B1 antibody|LMN antibody|LMN2 antibody|LMNB antibody| Lmnbl antibody|LMNB1_HUMAN antibody| MGC111419 antibody|OTTHUMP00000159218 antibody

Gene ID: 4001

UniProt: [P20700](#)

Pathways: [Apoptosis](#), [Caspase Cascade in Apoptosis](#)

Application Details

Application Notes: WB: Concentration: 0.1-0.5 µg/mL, Tested Species: Human, Mouse, Rat
IHC-P: Concentration: 0.5-1 µg/mL, Tested Species: Human, Mouse, Rat, Epitope Retrieval by Heat: Boiling the paraffin sections in 10 mM citrate buffer, pH 6.0, for 20 mins is required for the staining of formalin/paraffin sections.
Notes: Tested Species: Species with positive results. Other applications have not been tested. Optimal dilutions should be determined by end users.

Comment: Antibody can be supported by chemiluminescence kit ABIN921124 in WB, supported by ABIN921231 in IHC(P).

Restrictions: For Research Use only

Handling

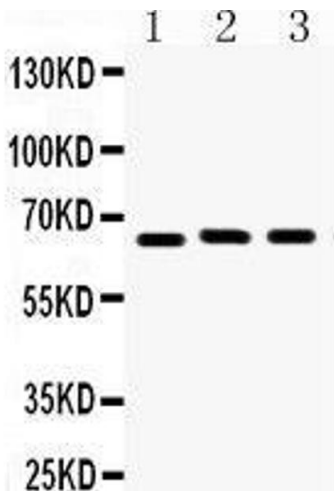
Format:	Lyophilized
Reconstitution:	Add 0.2 mL of distilled water will yield a concentration of 500 µg/mL.
Concentration:	500 µg/mL
Buffer:	Each vial contains 5 mg BSA, 0.9 mg NaCl, 0.2 mg Na ₂ HPO ₄ , 0.05 mg Sodium azide.
Preservative:	Sodium azide
Precaution of Use:	This product contains Sodium azide: a POISONOUS AND HAZARDOUS SUBSTANCE which should be handled by trained staff only.
Handling Advice:	Avoid repeated freezing and thawing.
Storage:	4 °C/-20 °C
Storage Comment:	At -20°C for one year. After reconstitution, at 4°C for one month. It can also be aliquotted and stored frozen at -20 °C for a longer time. Avoid repeated freezing and thawing.

Publications

Product cited in:	<p>Zhang, Wu: "Fasudil inhibits proliferation and migration of Hep-2 laryngeal carcinoma cells." in: Drug design, development and therapy, Vol. 12, pp. 373-381, (2018) (PubMed).</p> <p>Zhou, Wu, Ma, Xiao, Yu, Yang, Xu, Zhang, Zhou, Ye, Wang: "Attenuation of TGFBR2 expression and tumour progression in prostate cancer involve diverse hypoxia-regulated pathways." in: Journal of experimental & clinical cancer research : CR, Vol. 37, Issue 1, pp. 89, (2018) (PubMed).</p> <p>Schwartz, Bochkariov: "Novel chemiluminescent Western blot blocking and antibody incubation solution for enhanced antibody-antigen interaction and increased specificity." in: Electrophoresis, Vol. 38, Issue 20, pp. 2631-2637, (2017) (PubMed).</p> <p>Zuo, Liu, Zhang, Wu, Guo, Liao: "Development of trastuzumab-resistant human gastric carcinoma cell lines and mechanisms of drug resistance." in: Scientific reports, Vol. 5, pp. 11634, (2015) (PubMed).</p> <p>Chen, Bao, Zhou, Wang, Wei, Fan: "Glucose transporter-1 expression in CD133+ laryngeal carcinoma Hep-2 cells." in: Molecular medicine reports, Vol. 8, Issue 6, pp. 1695-700, (2013) (PubMed).</p>
-------------------	---

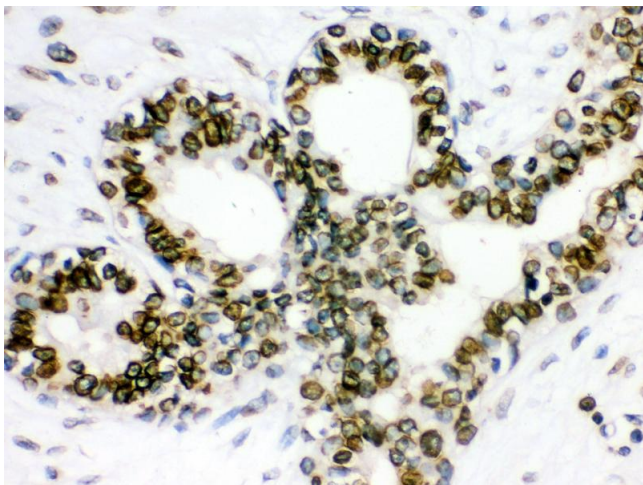
There are more publications referencing this product on: [Product page](#)

Images



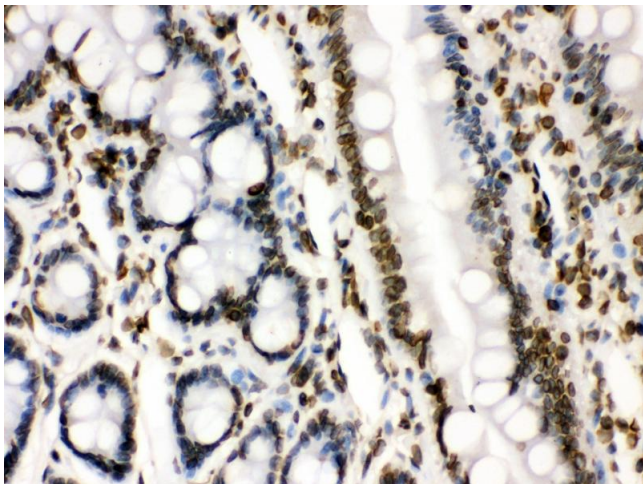
Western Blotting

Image 1.



Immunohistochemistry

Image 2. Anti- Lamin B1 Picoband antibody, IHC(P) IHC(P):
Human Mammary Cancer Tissue



Immunohistochemistry

Image 3. Anti- Lamin B1 Picoband antibody, IHC(P) IHC(P):
Rat Intestine Tissue

Please check the [product details page](#) for more images. Overall 11 images are available for ABIN3042505.