

Datasheet for ABIN3042507
anti-LOXL1 antibody (C-Term)[Go to Product page](#)

2 Images

Overview

Quantity:	100 µg
Target:	LOXL1
Binding Specificity:	AA 397-425, C-Term
Reactivity:	Human
Host:	Rabbit
Clonality:	Polyclonal
Conjugate:	This LOXL1 antibody is un-conjugated
Application:	Western Blotting (WB), Immunohistochemistry (Paraffin-embedded Sections) (IHC (p))

Product Details

Purpose:	Rabbit IgG polyclonal antibody for Lysyl oxidase homolog 1(LOXL1) detection. Tested with WB, IHC-P in Human.
Immunogen:	A synthetic peptide corresponding to a sequence at the C-terminus of human LOXL1 (397-425aa AEEKCLASTAYAPEATDYDVRVLLRFPQR), different from the related mouse sequence by one amino acid.
Sequence:	AEEKCLASTA YAPEATDYDV RVLLRFPQR
Isotype:	IgG
Cross-Reactivity (Details):	No cross reactivity with other proteins.
Characteristics:	Rabbit IgG polyclonal antibody for Lysyl oxidase homolog 1(LOXL1) detection. Tested with WB, IHC-P in Human. Gene Name: lysyl oxidase-like 1

Product Details

Protein Name: Lysyl oxidase homolog 1

Purification: Immunogen affinity purified.

Target Details

Target: LOXL1

Alternative Name: LOXL1 ([LOXL1 Products](#))

Background: Lysyl oxidase homolog 1, also known as LOXL1, is an enzyme which in humans is encoded by the LOXL1 gene. This gene encodes a member of the lysyl oxidase gene family. The prototypic member of the family is essential to the biogenesis of connective tissue, encoding an extracellular copper-dependent amine oxidase that catalyses the first step in the formation of crosslinks in collagens and elastin. A highly conserved amino acid sequence at the C-terminus end appears to be sufficient for amine oxidase activity, suggesting that each family member may retain this function. The N-terminus is poorly conserved and may impart additional roles in developmental regulation, senescence, tumor suppression, cell growth control, and chemotaxis to each member of the family.

Synonyms: Lysyl oxidase like 1 antibody|LOL antibody|LOXL antibody|Lysyl oxidase homolog 1 antibody|Lysyl oxidase like protein 1 antibody

Gene ID: 4016

UniProt: [Q08397](#)

Application Details

Application Notes: WB: Concentration: 0.1-0.5 µg/mL, Tested Species: Human
IHC-P: Concentration: 0.5-1 µg/mL, Tested Species: Human, Epitope Retrieval by Heat: Boiling the paraffin sections in 10 mM citrate buffer, pH 6.0, for 20 mins is required for the staining of formalin/paraffin sections.
Notes: Tested Species: Species with positive results. Other applications have not been tested. Optimal dilutions should be determined by end users.

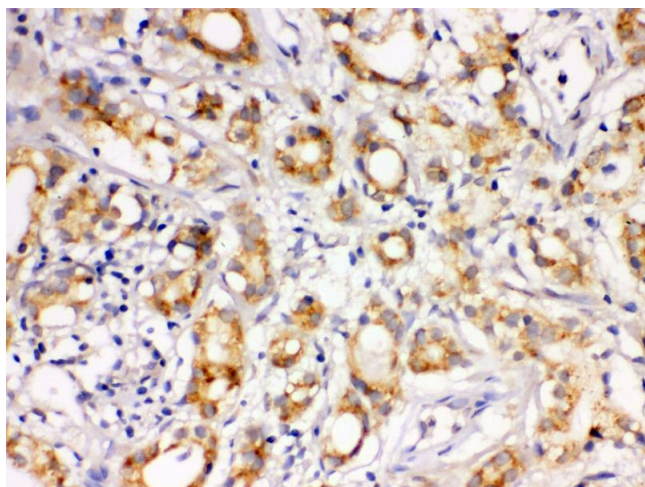
Comment: Antibody can be supported by chemiluminescence kit ABIN921124 in WB, supported by ABIN921231 in IHC(P).

Restrictions: For Research Use only

Handling

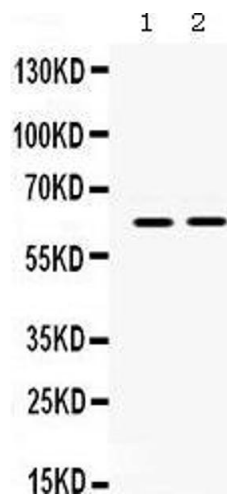
Format:	Lyophilized
Reconstitution:	Add 0.2 mL of distilled water will yield a concentration of 500 µg/mL.
Concentration:	500 µg/mL
Buffer:	Each vial contains 5 mg BSA, 0.9 mg NaCl, 0.2 mg Na ₂ HPO ₄ , 0.05 mg Sodium azide.
Preservative:	Sodium azide
Precaution of Use:	This product contains Sodium azide: a POISONOUS AND HAZARDOUS SUBSTANCE which should be handled by trained staff only.
Handling Advice:	Avoid repeated freezing and thawing.
Storage:	4 °C/-20 °C
Storage Comment:	At -20°C for one year. After reconstitution, at 4°C for one month. It can also be aliquotted and stored frozen at -20 °C for a longer time. Avoid repeated freezing and thawing.

Images



Immunohistochemistry

Image 1. Anti- LOXL1 Picoband antibody, IHC(P) IHC(P):
Human Prostatic Cancer Tissue



Western Blotting

Image 2. Observed bind size: 63KD