



[Go to Product page](#)

Datasheet for ABIN3042554  
**anti-RAB8A antibody (C-Term)**

3 Images

Overview

Quantity:	100 µg
Target:	RAB8A
Binding Specificity:	AA 170-183, C-Term
Reactivity:	Human, Mouse, Rat
Host:	Rabbit
Clonality:	Polyclonal
Conjugate:	This RAB8A antibody is un-conjugated
Application:	Western Blotting (WB), Immunohistochemistry (Paraffin-embedded Sections) (IHC (p))

Product Details

Purpose:	Rabbit IgG polyclonal antibody for Ras-related protein Rab-8A(RAB8A) detection. Tested with WB, IHC-P in Human,Mouse,Rat.
Immunogen:	A synthetic peptide corresponding to a sequence at the C-terminus of human RAB8A(170-183aa KAKMDKKLEGNSPQ), identical to the related mouse and rat sequences.
Sequence:	KAKMDKKLEG NSPQ
Isotype:	IgG
Cross-Reactivity (Details):	No cross reactivity with other proteins.
Characteristics:	Rabbit IgG polyclonal antibody for Ras-related protein Rab-8A(RAB8A) detection. Tested with WB, IHC-P in Human,Mouse,Rat. Gene Name: RAB8A, member RAS oncogene family Protein Name: Ras-related protein Rab-8A

## Product Details

---

Purification: Immunogen affinity purified.

## Target Details

---

Target: RAB8A

Alternative Name: RAB8A ([RAB8A Products](#))

Background: Ras-related protein Rab-8A is a protein that in humans is encoded by the RAB8A gene. It is mapped to 19p13.12. The protein encoded by this gene is a member of the RAS superfamily which are small GTP/GDP-binding proteins with an average size of 200 amino acids. The RAS-related proteins of the RAB/YPT family may play a role in the transport of proteins from the endoplasmic reticulum to the Golgi and the plasma membrane. RAB8A regulates cilia assembly by targeting and promoting fusion of vesicles near the ciliary membrane. This gene requires CEP290 for centrosome localization and that CEP290 regulates entry of RAB8A into the cilium during assembly of this organelle. RAB8A has been shown to interact with Optineurin and MAP4K2.

Synonyms: AA409338 antibody|MEL antibody|Mel transforming oncogene(derived from cell line NK14) RAB8 homolog antibody|Mel transforming oncogene(derived from cell line NK14) antibody|Mel transforming oncogene(RAB8 homolog) antibody|Mel transforming oncogene antibody|MGC124948 antibody|Oncogene c mel antibody|Oncogene c-mel antibody|RAB8 antibody|RAB8A antibody|RAB8A member RAS oncogene family antibody|Ras associated protein RAB8 antibody|Ras related protein Rab 8A antibody|Ras-related protein Rab-8A antibody

UniProt: [P61006](#)

Pathways: [M Phase](#), [Regulation of long-term Neuronal Synaptic Plasticity](#), [SARS-CoV-2 Protein Interactome](#)

## Application Details

---

Application Notes: WB: Concentration: 0.1-0.5 µg/mL, Tested Species: Human, Mouse, Rat  
IHC-P: Concentration: 0.5-1 µg/mL, Tested Species: Human, Predicted Species: Mouse, Rat, Epitope Retrieval by Heat: Boiling the paraffin sections in 10 mM citrate buffer, pH 6.0, for 20 mins is required for the staining of formalin/paraffin sections.  
Notes: Tested Species: Species with positive results. Predicted Species: Species predicted to be fit for the product based on sequence similarities. Other applications have not been tested.  
Optimal dilutions should be determined by end users.

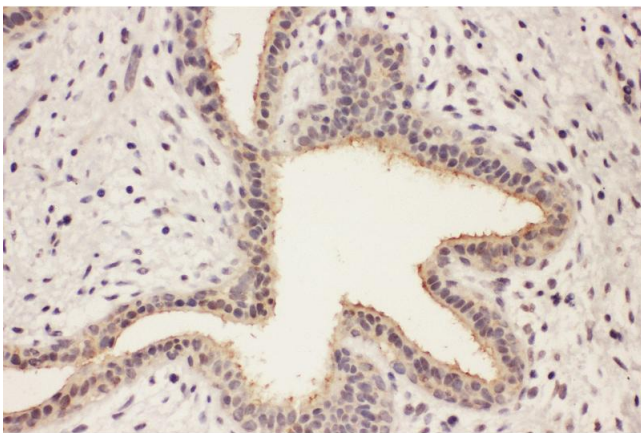
## Application Details

Comment:	Antibody can be supported by chemiluminescence kit ABIN921124 in WB, supported by ABIN921231 in IHC(P).
Restrictions:	For Research Use only

## Handling

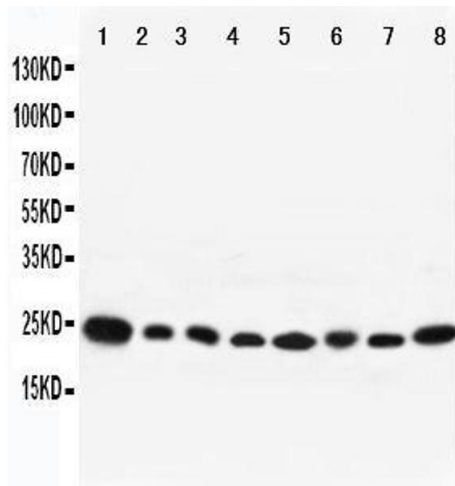
Format:	Lyophilized
Reconstitution:	Add 0.2 mL of distilled water will yield a concentration of 500 µg/mL.
Concentration:	500 µg/mL
Buffer:	Each vial contains 5 mg BSA, 0.9 mg NaCl, 0.2 mg Na <sub>2</sub> HPO <sub>4</sub> , 0.05 mg Thimerosal, 0.05 mg Sodium azide.
Preservative:	Thimerosal (Merthiolate), Sodium azide
Precaution of Use:	This product contains Sodium azide and Thimerosal (Merthiolate): POISONOUS AND HAZARDOUS SUBSTANCES which should be handled by trained staff only.
Handling Advice:	Avoid repeated freezing and thawing.
Storage:	4 °C/-20 °C
Storage Comment:	At -20°C for one year. After reconstitution, at 4°C for one month. It can also be aliquotted and stored frozen at -20 °C for a longer time. Avoid repeated freezing and thawing.

## Images



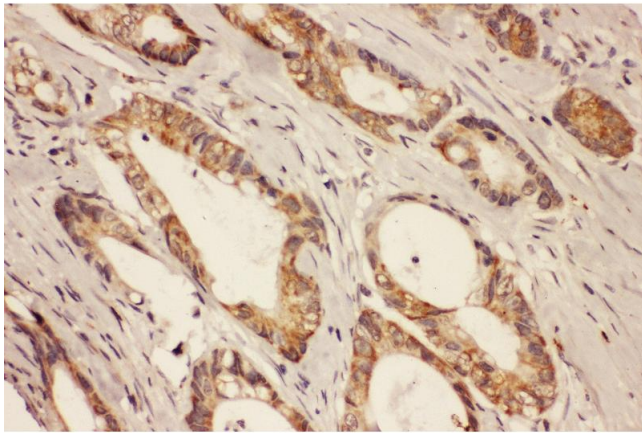
### Immunohistochemistry

**Image 1.** Anti-RAB8A antibody, IHC(P) IHC(P): Human Mammary Cancer Tissue



### Western Blotting

Image 2.



### Immunohistochemistry

Image 3. Anti-RAB8A antibody, IHC(P) IHC(P): Human Intestinal Cancer Tissue