

Datasheet for ABIN3042611  
**anti-GJB1 antibody (Middle Region)**

## 2 Images

[Go to Product page](#)

## Overview

|                      |  |
|----------------------|--|
| Quantity:            | 100 µg   |
| Target:              | GJB1   |
| Binding Specificity: | AA 215-231, Middle Region  |
| Reactivity:          | Human, Rat, Mouse  |
| Host:                | Rabbit   |
| Clonality:           | Polyclonal   |
| Conjugate:           | This GJB1 antibody is un-conjugated  |
| Application:         | Western Blotting (WB), Immunohistochemistry (Paraffin-embedded Sections) (IHC (p)) |

## Product Details

|                             |  |
|-----------------------------|--|
| Purpose:                    | Rabbit IgG polyclonal antibody for Gap junction beta-1 protein(GJB1) detection. Tested with WB, IHC-P in Human,Mouse,Rat.  |
| Immunogen:                  | A synthetic peptide corresponding to a sequence in the middle region of human Connexin 32/GJB1(215-231aa RACARRAQRRSNPPSRK), identical to the related mouse and rat sequences.   |
| Sequence:                   | RACARRAQRR SNPPSRK   |
| Isotype:                    | IgG  |
| Cross-Reactivity (Details): | No cross reactivity with other proteins.   |
| Characteristics:            | Rabbit IgG polyclonal antibody for Gap junction beta-1 protein(GJB1) detection. Tested with WB, IHC-P in Human,Mouse,Rat.<br><br>Gene Name: gap junction protein, beta 1, 32 kDa |

## Product Details

Protein Name: Gap junction beta-1 protein

Purification: Immunogen affinity purified.

## Target Details

Target: GJB1

Alternative Name: GJB1 ([GJB1 Products](#))

Background: Connexins are membrane-spanning proteins that assemble to form gap junction channels that facilitate the transfer of ions and small molecules between cells(Bergoffen et al., 1993). For a general discussion of connexin proteins, also known as Gap junction beta-1 protein. Gap junction beta-1 protein is a protein that in humans is encoded by the GJB1 gene. In melanocytic cells GJB1 gene expression may be regulated by MITF.

Synonyms: Charcot Marie Tooth neuropathy X linked antibody|CMTX 1 antibody|CMTX antibody|CMTX1 antibody|Connexin-32 antibody|Connexin32 antibody|CX 32 antibody|CX32 antibody|CXB1\_HUMAN antibody|GAP junction 28 kDa liver protein antibody|Gap junction beta 1 protein antibody|Gap junction beta-1 protein antibody|Gap junction protein beta 1 32kD antibody|Gap junction protein beta 1 antibody|GJB 1 antibody|GJB1 antibody

UniProt: [P08034](#)

Pathways: [Cell-Cell Junction Organization](#)

## Application Details

Application Notes: WB: Concentration: 0.1-0.5 µg/mL, Tested Species: Human, Rat, Predicted Species: Mouse  
IHC-P: Concentration: 0.5-1 µg/mL, Tested Species: Human, Mouse, Rat, Epitope Retrieval by Heat: Boiling the paraffin sections in 10 mM citrate buffer, pH 6.0, for 20 mins is required for the staining of formalin/paraffin sections.  
Notes: Tested Species: Species with positive results. Predicted Species: Species predicted to be fit for the product based on sequence similarities. Other applications have not been tested.  
Optimal dilutions should be determined by end users.

Comment: Antibody can be supported by chemiluminescence kit ABIN921124 in WB, supported by ABIN921231 in IHC(P).

Restrictions: For Research Use only

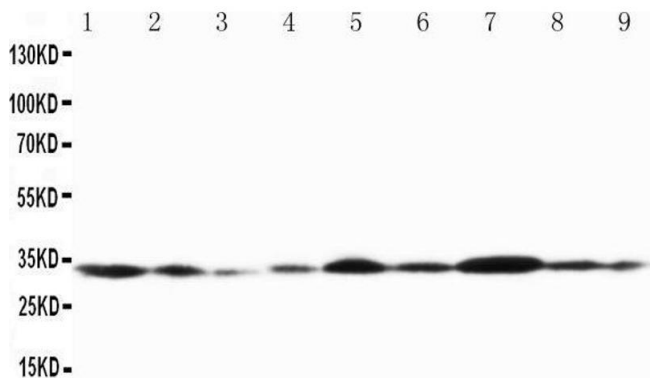
## Handling

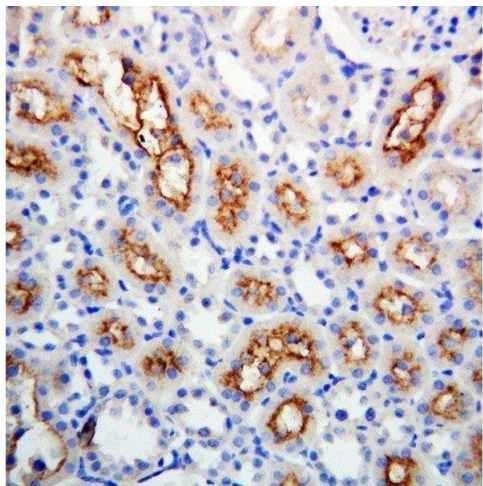
|                    |   |
|--------------------|---|
| Format:            | Lyophilized   |
| Reconstitution:    | Add 0.2 mL of distilled water will yield a concentration of 500 µg/mL.  |
| Concentration:     | 500 µg/mL   |
| Buffer:            | Each vial contains 5 mg BSA, 0.9 mg NaCl, 0.2 mg Na <sub>2</sub> HPO <sub>4</sub> , 0.05 mg Thimerosal, 0.05 mg Sodium azide.   |
| Preservative:      | Thimerosal (Merthiolate), Sodium azide  |
| Precaution of Use: | This product contains Sodium azide and Thimerosal (Merthiolate): POISONOUS AND HAZARDOUS SUBSTANCES which should be handled by trained staff only.                                  |
| Handling Advice:   | Avoid repeated freezing and thawing.  |
| Storage:           | 4 °C/-20 °C   |
| Storage Comment:   | At -20°C for one year. After reconstitution, at 4°C for one month.<br>It can also be aliquotted and stored frozen at -20 °C for a longer time. Avoid repeated freezing and thawing. |
| Expiry Date:       | 12 months   |

## Images

### Western Blotting

Image 1.





Immunohistochemistry

**Image 2.** Anti-Connexin 32/GJB1 antibody, IHC(P)  
IHC(P):Rat Kidney Tissue