

Datasheet for ABIN3042613
anti-P-Cadherin antibody (Middle Region)[Go to Product page](#)

3 Images

Overview

Quantity:	100 µg
Target:	P-Cadherin (CDH3)
Binding Specificity:	AA 612-626, Middle Region
Reactivity:	Human
Host:	Rabbit
Clonality:	Polyclonal
Conjugate:	This P-Cadherin antibody is un-conjugated
Application:	Western Blotting (WB), Immunohistochemistry (Paraffin-embedded Sections) (IHC (p)), Immunocytochemistry (ICC)

Product Details

Purpose:	Rabbit IgG polyclonal antibody for Cadherin-3(CDH3) detection. Tested with WB, IHC-P, ICC in Human.
Immunogen:	A synthetic peptide corresponding to a sequence in the middle region of human P cadherin(612-626aa QDTYDVHLSLSDHGN), different from the mouse and rat sequences by one amino acid.
Sequence:	QDTYDVHLSL SDHGN
Isotype:	IgG
Cross-Reactivity (Details):	No cross reactivity with other proteins.
Characteristics:	Rabbit IgG polyclonal antibody for Cadherin-3(CDH3) detection. Tested with WB, IHC-P, ICC in Human.

Product Details

Gene Name: cadherin 3, type 1, P-cadherin(placental)

Protein Name: Cadherin-3

Purification: Immunogen affinity purified.

Target Details

Target: P-Cadherin (CDH3)

Alternative Name: CDH3 ([CDH3 Products](#))

Background: Cadherins, such as CDH3, are integral membrane glycoproteins responsible for calcium-dependent cell-cell adhesion. Cadherin-3 is a protein that in humans is encoded by the CDH3 gene. This gene is a classical cadherin from the cadherin superfamily. The encoded protein is a calcium-dependent cell-cell adhesion glycoprotein composed of five extracellular cadherin repeats, a transmembrane region and a highly conserved cytoplasmic tail. This gene is located in a six-cadherin cluster in a region on the long arm of chromosome 16 that is involved in loss of heterozygosity events in breast and prostate cancer. In addition, aberrant expression of this protein is observed in cervical adenocarcinomas. Mutations in this gene have been associated with congenital hypotrichosis with juvenile macular dystrophy.

Synonyms: CADH3_HUMAN antibody|Cadherin 3 antibody|Cadherin 3 precursor antibody|Cadherin 3 type 1 antibody|Cadherin-3 antibody|Cadherin-3 precursor antibody|Cadh antibody|Calcium dependent adhesion protein placental antibody|Calcium-dependent adhesion protein placental antibody|CDH 3 antibody|CDH3 antibody|CDH3 protein antibody|CDHP antibody|HJMD antibody|P cadherin(placental) antibody|P-cadherin(placental) antibody|P-cadherin antibody|PCAD antibody|Placental cadherin antibody

UniProt: [P22223](#)

Application Details

Application Notes: WB: Concentration: 0.1-0.5 µg/mL, Tested Species: Human
IHC-P: Concentration: 0.5-1 µg/mL, Tested Species: Human, Epitope Retrieval by Heat: Boiling the paraffin sections in 10 mM citrate buffer, pH 6.0, for 20 mins is required for the staining of formalin/paraffin sections.
ICC: Concentration: 0.5-1 µg/mL, Tested Species: Human
Notes: Tested Species: Species with positive results. Predicted Species: Species predicted to be fit for the product based on sequence similarities. Other applications have not been tested.

Application Details

Optimal dilutions should be determined by end users.

Comment: Antibody can be supported by chemiluminescence kit ABIN921124 in WB, supported by ABIN921231 in IHC(P) and ICC.

Restrictions: For Research Use only

Handling

Format: Lyophilized

Reconstitution: Add 0.2 mL of distilled water will yield a concentration of 500 µg/mL.

Concentration: 500 µg/mL

Buffer: Each vial contains 5 mg BSA, 0.9 mg NaCl, 0.2 mg Na₂HPO₄, 0.05 mg Thimerosal, 0.05 mg Sodium azide.

Preservative: Thimerosal (Merthiolate), Sodium azide

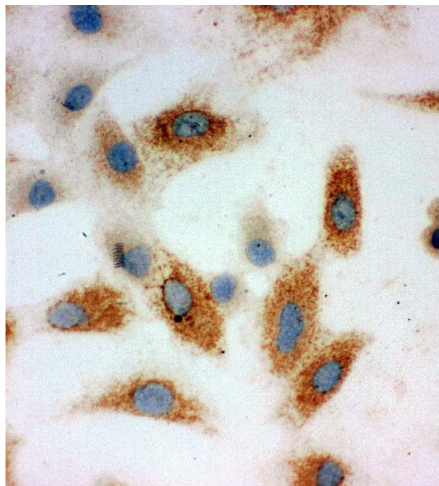
Precaution of Use: This product contains Sodium azide and Thimerosal (Merthiolate): POISONOUS AND HAZARDOUS SUBSTANCES which should be handled by trained staff only.

Handling Advice: Avoid repeated freezing and thawing.

Storage: 4 °C/-20 °C

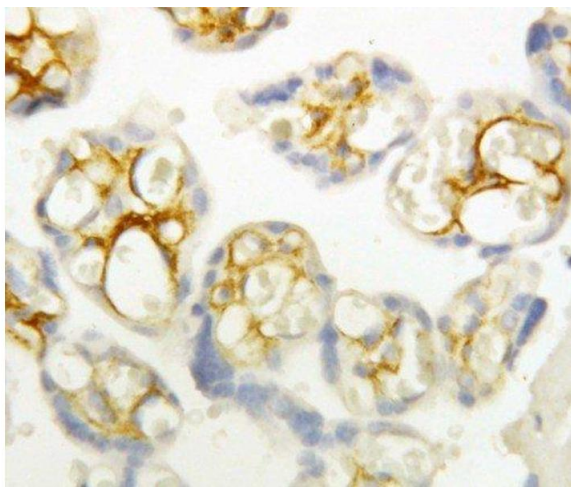
Storage Comment: At -20°C for one year. After reconstitution, at 4°C for one month.
It can also be aliquotted and stored frozen at -20 °C for a longer time. Avoid repeated freezing and thawing.

Expiry Date: 12 months



Immunohistochemistry

Image 1. Anti-P cadherin antibody, ICC ICC: A549 Cell



Immunohistochemistry

Image 2. Anti-P cadherin antibody, IHC(P) IHC(P): Human Placenta Tissue



Western Blotting

Image 3. Anti-P cadherin antibody, Western blotting Lane 1: Recombinant Human P-Cadherin Protein 10ng Lane 2: Recombinant Human P-Cadherin Protein 5ng