

Datasheet for ABIN3042624
anti-IL-18 antibody (C-Term)



[Go to Product page](#)

2 Images

3 Publications

Overview

Quantity:	100 µg
Target:	IL-18 (IL18)
Binding Specificity:	AA 175-193, C-Term
Reactivity:	Human
Host:	Rabbit
Clonality:	Polyclonal
Conjugate:	This IL-18 antibody is un-conjugated
Application:	Western Blotting (WB)

Product Details

Purpose:	Rabbit IgG polyclonal antibody for Interleukin-18(IL18) detection. Tested with WB in Human.
Immunogen:	A synthetic peptide corresponding to a sequence at the C-terminus of Human IL18(175-193aa KKEDELGDRSIMFTVQNED).
Sequence:	KKEDELGDRS IMFTVQNED
Isotype:	IgG
Cross-Reactivity (Details):	No cross reactivity with other proteins.
Characteristics:	Rabbit IgG polyclonal antibody for Interleukin-18(IL18) detection. Tested with WB in Human. Gene Name: interleukin 18(interferon-gamma-inducing factor) Protein Name: Interleukin-18
Purification:	Immunogen affinity purified.

Target Details

Target: IL-18 (IL18)

Alternative Name: IL18 ([IL18 Products](#))

Background: Interleukin-18 also known as IL18 is a protein which in humans is encoded by the IL18 gene. The protein encoded by this gene is a proinflammatory cytokine. IL-18 is a cytokine produced by macrophages and other cells that belongs to the IL-1 superfamily. IL-18 works by binding to the interleukin-18 receptor, and together with IL-12 it induces cell-mediated immunity following infection with microbial products like lipopolysaccharide (LPS). After stimulation with IL-18, natural killer (NK) cells and certain T cells release another important cytokine called interferon-gamma (IFN-gamma) or type II interferon that plays an important role in activating the macrophages or other cells. The combination of this cytokine and IL12 has been shown to inhibit IL4 dependent IgE and IgG1 production, and enhance IgG2a production in B cells. IL-18 binding protein (IL18BP) can specifically interact with this cytokine, and thus negatively regulate its biological activity. The human interleukin 18 gene IL18 maps to 11q22.2-q22.3, closely linked to the DRD2 gene locus and distinct from mapped IDDM loci.

Synonyms: Iboctadekin antibody | IFN gamma inducing factor antibody | IFN-gamma-inducing factor antibody | IGIF antibody | IL 1 gamma antibody | IL 18 antibody | IL 1g antibody | IL-1 gamma antibody | IL-18 antibody | IL1 gamma antibody | IL18 antibody | IL18 protein antibody | IL1F4 antibody | IL1g antibody | IL1 gamma antibody | IL1F4 antibody | Interferon gamma inducing factor antibody | Interferon gamma-inducing factor antibody | Interleukin 1 gamma antibody | Interleukin 18 antibody | Interleukin-1 gamma antibody | Interleukin-18 antibody | Interleukin18 antibody | MGC12320 antibody

UniProt: [Q14116](#)

Pathways: [Cellular Response to Molecule of Bacterial Origin](#), [Activated T Cell Proliferation](#), [Cancer Immune Checkpoints](#), [Inflammasome](#)

Application Details

Application Notes: WB: Concentration: 0.1-0.5 µg/mL, Tested Species: Human
Notes: Tested Species: Species with positive results. Predicted Species: Species predicted to be fit for the product based on sequence similarities.
Other applications have not been tested. Optimal dilutions should be determined by end users.

Comment: Antibody can be supported by chemiluminescence kit ABIN921124 in WB.

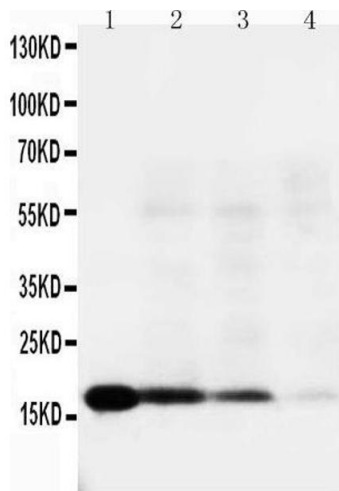
Restrictions: For Research Use only

Handling

Format:	Lyophilized
Reconstitution:	Add 0.2 mL of distilled water will yield a concentration of 500 µg/mL.
Concentration:	500 µg/mL
Buffer:	Each vial contains 5 mg BSA, 0.9 mg NaCl, 0.2 mg Na ₂ HPO ₄ , 0.05 mg Thimerosal, 0.05 mg Sodium azide.
Preservative:	Thimerosal (Merthiolate), Sodium azide
Precaution of Use:	This product contains Sodium azide and Thimerosal (Merthiolate): POISONOUS AND HAZARDOUS SUBSTANCES which should be handled by trained staff only.
Handling Advice:	Avoid repeated freezing and thawing.
Storage:	4 °C/-20 °C
Storage Comment:	At -20°C for one year. After reconstitution, at 4°C for one month. It can also be aliquotted and stored frozen at -20 °C for a longer time. Avoid repeated freezing and thawing.
Expiry Date:	12 months

Publications

Product cited in:	Si, Zhang, Gao, Chen, Zhao, Cheng: "Effects of IFN- γ on IL-18 Expression in Pregnant Rats and Pregnancy Outcomes." in: Asian-Australasian journal of animal sciences , Vol. 26, Issue 10, pp. 1399-405, (2014) (PubMed).
	Wang, Zhang, Zhang, Xu, Fang: "Expression and localization of IL-18 in the hypothalamic-pituitary-ovarian axis of non-pregnant, pregnant, and abortive rats." in: Journal of reproductive immunology , Vol. 92, Issue 1-2, pp. 45-53, (2011) (PubMed).
	Yang, Shen, Chen, Ge: "Role of interleukin 18 in acute lung inflammation induced by gut ischemia reperfusion." in: World journal of gastroenterology , Vol. 11, Issue 29, pp. 4524-9, (2005) (PubMed).



Western Blotting

Image 1. Lane 4: RAJI Cell Lysate



Western Blotting

Image 2. Western blot analysis of IL-18 expression in HELA whole cell lysates (Lane 1). IL-18 at 22KD was detected using rabbit anti- IL-18 Antigen Affinity purified polyclonal antibody (Catalog #) at 0.5 µg/mL. The blot was developed using chemiluminescence (ECL) method (Catalog # EK1002).