

Datasheet for ABIN3042646  
**anti-IRF1 antibody (Middle Region)**

## 3 Images

[Go to Product page](#)

## Overview

|                      |   |
|----------------------|---|
| Quantity:            | 100 µg  |
| Target:              | IRF1  |
| Binding Specificity: | AA 169-183, Middle Region   |
| Reactivity:          | Human   |
| Host:                | Rabbit  |
| Clonality:           | Polyclonal  |
| Conjugate:           | This IRF1 antibody is un-conjugated   |
| Application:         | Western Blotting (WB), Immunocytochemistry (ICC), Immunohistochemistry (Paraffin-embedded Sections) (IHC (p)) |

## Product Details

|                             |  |
|-----------------------------|--|
| Purpose:                    | Rabbit IgG polyclonal antibody for Interferon regulatory factor 1(IRF1) detection. Tested with WB, IHC-P, ICC in Human.  |
| Immunogen:                  | A synthetic peptide corresponding to a sequence in the middle region of human IRF1(169-183aa YMQDLEVEQALTPAL).   |
| Sequence:                   | YMQDLEVEQA LTPAL   |
| Isotype:                    | IgG  |
| Cross-Reactivity (Details): | No cross reactivity with other proteins.   |
| Characteristics:            | Rabbit IgG polyclonal antibody for Interferon regulatory factor 1(IRF1) detection. Tested with WB, IHC-P, ICC in Human.<br>Gene Name: interferon regulatory factor 1 |

## Product Details

Protein Name: Interferon regulatory factor 1

Purification: Immunogen affinity purified.

## Target Details

Target: IRF1

Alternative Name: IRF1 ([IRF1 Products](#))

Background: Interferon regulatory factor 1, also known as MAR is a protein that in humans is encoded by the IRF1 gene. The IRF1 gene is mapped to chromosome 5q31.1 by pulsed-field gel electrophoresis. IRF1 encodes interferon regulatory factor 1, a member of the interferon regulatory transcription factor (IRF) family. IRF1 serves as an activator of interferons alpha and beta transcription, and in mouse it has been shown to be required for double-stranded RNA induction of these genes. IRF1 also functions as a transcription activator of genes induced by interferons alpha, beta, and gamma. Further, IRF1 has been shown to play roles in regulating apoptosis and tumor-suppression.

Synonyms: MAR antibody|IRF-1 antibody|interferon regulatory factor-1 antibody

UniProt: [P10914](#)

Pathways: [Interferon-gamma Pathway](#), [Response to Growth Hormone Stimulus](#), [Positive Regulation of Immune Effector Process](#), [Hepatitis C](#), [Autophagy](#)

## Application Details

Application Notes: WB: Concentration: 0.1-0.5 µg/mL, Tested Species: Human  
IHC-P: Concentration: 0.5-1 µg/mL, Tested Species: Human, Epitope Retrieval by Heat: Boiling the paraffin sections in 10 mM citrate buffer, pH 6.0, for 20 mins is required for the staining of formalin/paraffin sections.  
ICC: Concentration: 0.5-1 µg/mL, Tested Species: Human  
Notes: Tested Species: Species with positive results. Predicted Species: Species predicted to be fit for the product based on sequence similarities. Other applications have not been tested.  
Optimal dilutions should be determined by end users.

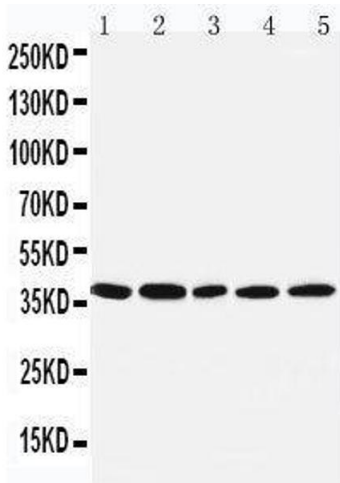
Comment: Antibody can be supported by chemiluminescence kit ABIN921124 in WB, supported by ABIN921231 in IHC(P) and ICC.

Restrictions: For Research Use only

## Handling

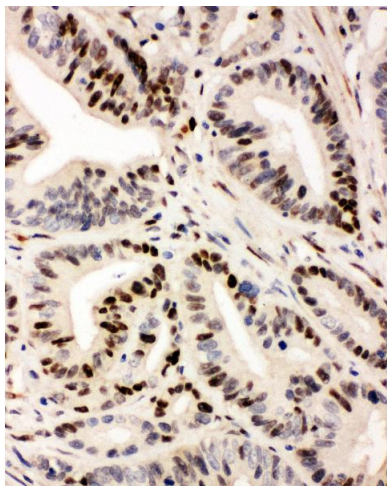
|                    |   |
|--------------------|---|
| Format:            | Lyophilized   |
| Reconstitution:    | Add 0.2 mL of distilled water will yield a concentration of 500 µg/mL.  |
| Concentration:     | 500 µg/mL   |
| Buffer:            | Each vial contains 5 mg BSA, 0.9 mg NaCl, 0.2 mg Na <sub>2</sub> HPO <sub>4</sub> , 0.05 mg Thimerosal, 0.05 mg Sodium azide.   |
| Preservative:      | Thimerosal (Merthiolate), Sodium azide  |
| Precaution of Use: | This product contains Sodium azide and Thimerosal (Merthiolate): POISONOUS AND HAZARDOUS SUBSTANCES which should be handled by trained staff only.                                  |
| Handling Advice:   | Avoid repeated freezing and thawing.  |
| Storage:           | 4 °C/-20 °C   |
| Storage Comment:   | At -20°C for one year. After reconstitution, at 4°C for one month.<br>It can also be aliquotted and stored frozen at -20 °C for a longer time. Avoid repeated freezing and thawing. |
| Expiry Date:       | 12 months   |

## Images



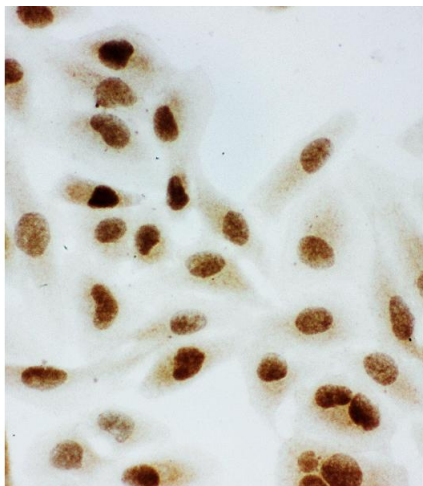
### Western Blotting

**Image 1.** Anti-IRF1 antibody, Western blotting Lane 1: COLO320 Cell Lysate Lane 2: U87 Cell Lysate Lane 3: HELA Cell Lysate Lane 4: JURKAT Cell Lysate Lane 5: MCF-7 Cell Lysate



#### Immunohistochemistry

**Image 2.** Anti-IRF1 antibody, IHC(P) IHC(P): Human Intestinal Cancer Tissue



#### Immunohistochemistry

**Image 3.** Anti-IRF1 antibody, ICC ICC: HELA Cell