



[Go to Product page](#)

Datasheet for ABIN3042651
anti-SIDT1 antibody (N-Term)

1 Image

Overview

Quantity:	100 µg
Target:	SIDT1
Binding Specificity:	AA 36-52, N-Term
Reactivity:	Human
Host:	Rabbit
Clonality:	Polyclonal
Application:	Western Blotting (WB)

Product Details

Purpose:	Rabbit IgG polyclonal antibody for SID1 transmembrane family member 1(SIDT1) detection. Tested with WB in Human.
Immunogen:	A synthetic peptide corresponding to a sequence at the N-terminus of human SIDT1(36-52aa RRDPFDAARGADFDHVY), different from the related rat sequence by five amino acids, and different from the related mouse sequence by three amino acids.
Sequence:	RRDPFDAARG ADFDHVY
Isotype:	IgG
Cross-Reactivity (Details):	No cross reactivity with other proteins.
Characteristics:	Rabbit IgG polyclonal antibody for SID1 transmembrane family member 1(SIDT1) detection. Tested with WB in Human. Gene Name: SID1 transmembrane family, member 1 Protein Name: SID1 transmembrane family member 1

Product Details

Purification: Immunogen affinity purified.

Target Details

Target: SIDT1

Alternative Name: SIDT1 ([SIDT1 Products](#))

Background: SID1 transmembrane family member 1, also called SID1, C. ELEGANS, is a protein which in humans is encoded by the SIDT1 gene. The protein encoded by this gene links to HGNC-curated gene family pages. The gene was assigned to human chromosome 3q13.31. This protein likely plays an important role in RNA transmembrane transporter activity.

Synonyms: AW045928 antibody|B830021E24Rik antibody|FLJ20174 antibody|Msid2 antibody|OTTMUSP00000032144 antibody|SID 1 antibody|SID1 antibody|SID1 transmembrane family member 1 antibody|SID1 transmembrane family, member 1 antibody|SIDT1 antibody|SIDT1_HUMAN antibody

Application Details

Application Notes: WB: Concentration: 0.1-0.5 µg/mL, Tested Species: Human, The detection limit for SIDT1 is approximately 0.5 ng/lane under reducing conditions.
Notes: Tested Species: Species with positive results. Predicted Species: Species predicted to be fit for the product based on sequence similarities.
Other applications have not been tested. Optimal dilutions should be determined by end users.

Comment: Antibody can be supported by chemiluminescence kit ABIN921124 in WB.

Restrictions: For Research Use only

Handling

Format: Lyophilized

Reconstitution: Add 0.2 mL of distilled water will yield a concentration of 500 µg/mL.

Concentration: 500 µg/mL

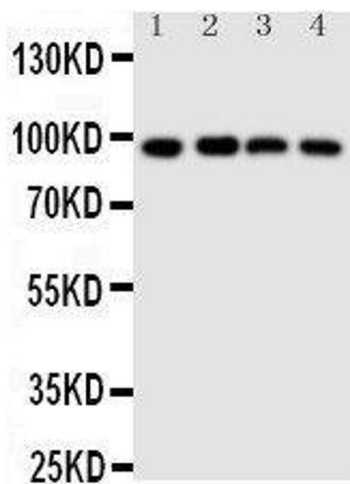
Buffer: Each vial contains 5 mg BSA, 0.9 mg NaCl, 0.2 mg Na₂HPO₄, 0.05 mg Thimerosal, 0.05 mg Sodium azide.

Preservative: Thimerosal (Merthiolate), Sodium azide

Handling

Precaution of Use:	This product contains Sodium azide and Thimerosal (Merthiolate): POISONOUS AND HAZARDOUS SUBSTANCES which should be handled by trained staff only.
Handling Advice:	Avoid repeated freezing and thawing.
Storage:	4 °C/-20 °C
Storage Comment:	At -20°C for one year. After reconstitution, at 4°C for one month. It can also be aliquotted and stored frozen at -20 °C for a longer time. Avoid repeated freezing and thawing.
Expiry Date:	12 months

Images



Western Blotting

Image 1. Anti-SIDT1 antibody, Western blotting Lane 1: HELA Cell Lysate Lane 2: COLO320 Cell Lysate Lane 3: SW620 Cell Lysate Lane 4: Cell Lysate