

Datasheet for ABIN3042671  
**anti-Cullin 1 antibody (N-Term)**



[Go to Product page](#)

2 Images

## Overview

Quantity:	100 µg
Target:	Cullin 1 (CUL1)
Binding Specificity:	AA 34-52, N-Term
Reactivity:	Human, Mouse, Rat
Host:	Rabbit
Clonality:	Polyclonal
Conjugate:	This Cullin 1 antibody is un-conjugated
Application:	Western Blotting (WB), Immunohistochemistry (IHC)

## Product Details

Purpose:	Anti-Cullin 1/Cul1 Antibody Picoband®
Immunogen:	A synthetic peptide corresponding to a sequence at the N-terminus of human Cullin 1, identical to the related mouse and rat sequences.
Sequence:	RQSMASRYM ELYTHVYNY
Isotype:	IgG
Cross-Reactivity (Details):	No cross-reactivity with other proteins
Characteristics:	Anti-Cullin 1/Cul1 Antibody (ABIN3042671). Tested in IHC, WB applications. This antibody reacts with Human, Mouse, Rat. The brand Picoband indicates this is a premium antibody that guarantees superior quality, high affinity, and strong signals with minimal background in Western blot applications. Only our best-performing antibodies are designated as Picoband, ensuring unmatched performance.

## Product Details

Purification: Immunogen affinity purified.

## Target Details

Target: Cullin 1 (CUL1)

Alternative Name: Cul1 ([CUL1 Products](#))

Background: Synonyms: Cullin-1,CUL-1,CUL1,  
Tissue Specificity: Expressed in lung fibroblasts. .  
Background: Cullin 1, also known as CUL1, is a human protein and gene from cullin family. This protein plays an important role in protein degradation and protein ubiquitination. This is an essential component of the SCF (SKP1-CUL1-F-box protein) E3 ubiquitin ligase complex, which mediates the ubiquitination of proteins involved in cell cycle progression, signal transduction and transcription. Human cullin 1, but not the other closely related cullins 2, 3, 4A, and 5, selectively interacts with human SKP1.  
Sequence Similarities: Contains 1 bHLH (basic helix-loop-helix) domain.

Molecular Weight: 90 kDa

UniProt: [Q13616](#)

Pathways: [Cell Division Cycle](#), [Hedgehog Signaling](#), [Mitotic G1-G1/S Phases](#), [Regulation of Cell Size](#)

## Application Details

Application Notes: Immunohistochemistry (Paraffin-embedded Section), 0.5-1 µg/mL, Human, Mouse, Rat  
Western blot, 0.1-0.5 µg/mL, Human, Mouse, Rat  
1. Kipreos ET, Lander LE, Wing JP, et al. (1996). "cul-1 is required for cell cycle exit in C. elegans and identifies a novel gene family.". Cell 85 (6): 829-39. Bonaldo MF, Lennon G, Soares MB (1997). 2. "Normalization and subtraction: two approaches to facilitate gene discovery.". Genome Res. 6 (9): 791-806. 3. Michel, J. J., Xiong, Y. Human CUL-1, but not other cullin family members, selectively interacts with SKP1 to form a complex with SKP2 and cyclin A. Cell Growth Differ. 9: 435-449, 1998.

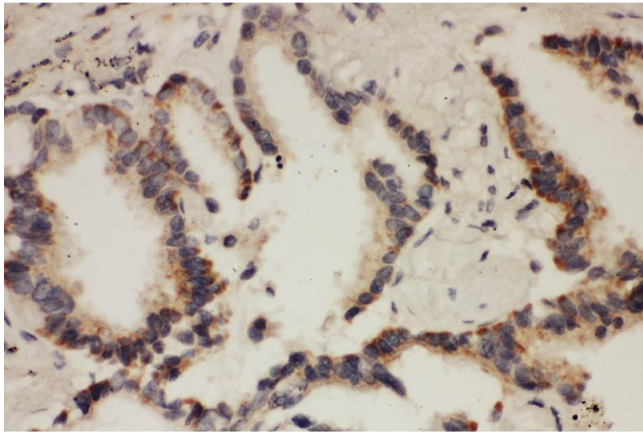
Comment: Antibody can be supported by chemiluminescence kit ABIN921124 in WB, supported by ABIN921231 in IHC(P).

Restrictions: For Research Use only

Handling

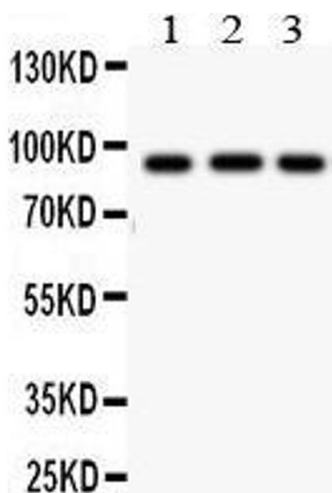
Format:	Lyophilized
Reconstitution:	Add 0.2 mL of distilled water will yield a concentration of 500 µg/mL.
Concentration:	500 µg/mL
Buffer:	Each vial contains 5 mg BSA, 0.9 mg NaCl, 0.2 mg Na2HPO4, 0.05 mg Thimerosal, 0.05 mg Sodium azide.
Preservative:	Thimerosal (Merthiolate), Sodium azide
Precaution of Use:	This product contains Thimerosal (Merthiolate) and Sodium azide: POISONOUS AND HAZARDOUS SUBSTANCES which should be handled by trained staff only.
Handling Advice:	Avoid repeated freezing and thawing.
Storage:	4 °C, -20 °C
Storage Comment:	Store at -20°C for one year from date of receipt. After reconstitution, at 4°C for one month. It can also be aliquotted and stored frozen at -20°C for six months. Avoid repeated freeze-thaw cycles.
Expiry Date:	12 months

Images



**Immunohistochemistry**

**Image 1.** Anti- CUL1antibody, IHC(P) IHC(P): Human Lung Cancer Tissue



Western Blotting

**Image 2.** Anti- CUL1 antibody, Western blotting All lanes: Anti CUL1 at 0.5ug/ml Lane 1: MM453 Whole Cell Lysate at 40ug Lane 2: Whole Cell Lysate at 40ug Lane 3: SMMC Whole Cell Lysate at 40ug Predicted bind size: 90 KD Observed bind size: 90 KD