

Datasheet for ABIN3042693

## anti-BCL2L2 antibody (Middle Region)



[Go to Product page](#)

### 2 Images

#### Overview

Quantity:	100 µg
Target:	BCL2L2
Binding Specificity:	AA 74-88, Middle Region
Reactivity:	Human, Mouse, Rat
Host:	Rabbit
Clonality:	Polyclonal
Conjugate:	This BCL2L2 antibody is un-conjugated
Application:	Western Blotting (WB), Immunohistochemistry (IHC), Immunocytochemistry (ICC), Flow Cytometry (FACS)

#### Product Details

Purpose:	Anti-Bcl-2-like protein 2 Bcl2L2 Antibody Picoband®
Immunogen:	A synthetic peptide corresponding to a sequence in the middle region of human BCL2L2, identical to the related rat and mouse sequences.
Sequence:	SAQQRFTQVS DELFQ
Isotype:	IgG
Cross-Reactivity (Details):	No cross-reactivity with other proteins
Characteristics:	Anti-Bcl-2-like protein 2 Bcl2L2 Antibody (ABIN3042693). Tested in Flow Cytometry, IHC, ICC, WB applications. This antibody reacts with Human, Mouse, Rat. The brand Picoband indicates this is a premium antibody that guarantees superior quality, high affinity, and strong signals with minimal background in Western blot applications. Only our best-performing antibodies are

## Product Details

designated as Picoband, ensuring unmatched performance.

Purification: Immunogen affinity purified.

## Target Details

Target: BCL2L2

Alternative Name: BCL2L2 ([BCL2L2 Products](#))

Background: Synonyms: Bcl-2-like protein 2, Bcl2-L-2, Apoptosis regulator Bcl-W, BCL2L2, BCLW, KIAA0271, Tissue Specificity: Expressed (at protein level) in a wide range of tissues with highest levels in brain, spinal cord, testis, pancreas, heart, spleen and mammary glands. Moderate levels found in thymus, ovary and small intestine. Not detected in salivary gland, muscle or liver. Also expressed in cell lines of myeloid, fibroblast and epithelial origin. Not detected in most lymphoid cell lines. .

Background: Bcl-2-like protein 2 is a protein that in humans is encoded by the BCL2L2 gene. This gene encodes a pro-survival (anti-apoptotic) member of the bcl-2 protein family. Its gene is mapped to human chromosome 14q11.2-q12. In all, it has got 193 amino acids. Generally speaking, the BCL2 can be found in brain, colon and salivary gland. Acting as the anti- and pro-apoptotic regulators, it has played a vital role in reducing the cell apoptosis under cytotoxic conditions.

Sequence Similarities: Belongs to the Bcl-2 family.

Molecular Weight: 21 kDa

UniProt: [Q92843](#)

## Application Details

Application Notes: Immunohistochemistry (Paraffin-embedded Section), 0.5-1 µg/mL, Human, Rat, Mouse  
Western blot, 0.1-0.5 µg/mL, Human, Rat, Mouse  
Immunohistochemistry (Frozen Section), 0.5-1 µg/mL, Human  
Immunocytochemistry, 0.5-1 µg/mL, Human  
Flow Cytometry (Fixed), 1-3 µg/1×10<sup>6</sup> cells, Human1. Gibson L, Holmgreen SP, Huang DC, Bernard O, Copeland NG, Jenkins NA, Sutherland GR, Baker E, Adams JM, Cory S (Oct 1996). "bcl-w, a novel member of the bcl-2 family, promotes cell survival". Oncogene 13 (4): 665-75. PMID 8761287. 2. "Entrez Gene: BCL2L2 BCL2-like 2".

Comment: Antibody can be supported by chemiluminescence kit ABIN921124 in WB, supported by ABIN921231 in IHC(P).

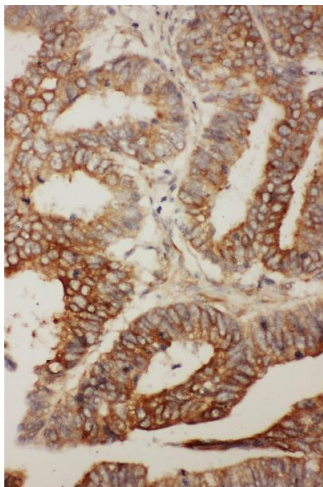
## Application Details

Restrictions: For Research Use only

## Handling

Format:	Lyophilized
Reconstitution:	Add 0.2 mL of distilled water will yield a concentration of 500 µg/mL.
Concentration:	500 µg/mL
Buffer:	Each vial contains 5 mg BSA, 0.9 mg NaCl, 0.2 mg Na <sub>2</sub> HPO <sub>4</sub> , 0.05 mg Thimerosal, 0.05 mg Sodium azide.
Preservative:	Thimerosal (Merthiolate), Sodium azide
Precaution of Use:	This product contains Thimerosal (Merthiolate) and Sodium azide: POISONOUS AND HAZARDOUS SUBSTANCES which should be handled by trained staff only.
Handling Advice:	Avoid repeated freezing and thawing.
Storage:	4 °C, -20 °C
Storage Comment:	Store at -20°C for one year from date of receipt. After reconstitution, at 4°C for one month. It can also be aliquotted and stored frozen at -20°C for six months. Avoid repeated freeze-thaw cycles.
Expiry Date:	12 months

## Images



### Immunohistochemistry

**Image 1.** Anti- BCL2L2 antibody, IHC(P) IHC(P): Human Rectal Cancer Tissue



Western Blotting

**Image 2.** Anti- BCL2L2 antibody, Western blotting All lanes:  
Anti BCL2L2 () at 0.5ug/ml WB: HELAWhole Cell Lysate at  
40ug Predicted bind size: 21KD Observed bind size: 21KD