



Datasheet for ABIN3042699
anti-Ubiquitin B antibody (N-Term)



[Go to Product page](#)

2 Images

Overview

Quantity:	100 µg
Target:	Ubiquitin B (UBB)
Binding Specificity:	AA 29-45, N-Term
Reactivity:	Human, Rat
Host:	Rabbit
Clonality:	Polyclonal
Conjugate:	This Ubiquitin B antibody is un-conjugated
Application:	Western Blotting (WB), Immunohistochemistry (Paraffin-embedded Sections) (IHC (p))

Product Details

Purpose:	Rabbit IgG polyclonal antibody for Polyubiquitin-B(UBB) detection. Tested with WB, IHC-P in Human,Mouse,Rat.
Immunogen:	A synthetic peptide corresponding to a sequence at the N-terminus of human Ubiquitin(29-45aa KIQDKEGIPPDQQLIF), identical to the rat and mouse sequences.
Sequence:	KIQDKEGIPP DQQLIF
Isotype:	IgG
Cross-Reactivity (Details):	Predicted Cross Reactivity: mouse No cross reactivity with other proteins. Predicted Cross Reactivity: Species predicted to be fit for the product based on sequence similarities.
Characteristics:	Rabbit IgG polyclonal antibody for Polyubiquitin-B(UBB) detection. Tested with WB, IHC-P in

Product Details

Human,Mouse,Rat.

Gene Name: ubiquitin B

Protein Name: Polyubiquitin-B

Purification: Immunogen affinity purified.

Target Details

Target: Ubiquitin B (UBB)

Alternative Name: UBB ([UBB Products](#))

Background: Ubiquitin(originally, ubiquitous immunopoietic polypeptide) is a small regulatory protein that has been found in almost all tissues(ubiquitously) of eukaryotic organisms. Its gene is mapped to 16p 13.3. The ubiquitin protein itself consists of 76 amino acids and has a molecular mass of about 8.5 kDa. Ubiquitin binds to proteins and labels them for destruction. It directs protein recycling and also direct proteins to other locations in the cell, where they control other protein and cell mechanisms.

Synonyms: FLJ25987 antibody|MGC8385 antibody|Polyubiquitin B antibody|RPS 27A antibody|RPS27A antibody|UBA 52 antibody|UBA 80 antibody|UBA52 antibody|UBA80 antibody|UBB antibody|UBB_HUMAN antibody|UBC antibody|UBCEP 1 antibody|UBCEP 2 antibody|UBCEP1 antibody|UBCEP2 antibody|Ubiquitin antibody|ubiquitin B antibody

Pathways: [Fc-epsilon Receptor Signaling Pathway](#), [EGFR Signaling Pathway](#), [Neurotrophin Signaling Pathway](#), [Activation of Innate immune Response](#), [Mitotic G1-G1/S Phases](#), [DNA Replication](#), [Toll-Like Receptors Cascades](#), [Synthesis of DNA](#), [Autophagy](#), [EGFR Downregulation](#), [Ubiquitin Proteasome Pathway](#)

Application Details

Application Notes: WB: Concentration: 0.1-0.5 µg/mL, Tested Species: Human, Rat, Predicted Species: Mouse
IHC-P: Concentration: 0.5-1 µg/mL, Tested Species: Human, Rat, Predicted Species: Mouse,
Epitope Retrieval by Heat: Boiling the paraffin sections in 10 mM citrate buffer, pH 6.0, for 20 mins is required for the staining of formalin/paraffin sections.
Notes: Tested Species: Species with positive results. Predicted Species: Species predicted to be fit for the product based on sequence similarities. Other applications have not been tested.
Optimal dilutions should be determined by end users.

Comment: Antibody can be supported by chemiluminescence kit ABIN921124 in WB, supported by

Application Details

ABIN921231 in IHC(P).

Restrictions: For Research Use only

Handling

Format: Lyophilized

Reconstitution: Add 0.2 mL of distilled water will yield a concentration of 500 µg/mL.

Concentration: 500 µg/mL

Buffer: Each vial contains 5 mg BSA, 0.9 mg NaCl, 0.2 mg Na₂HPO₄, 0.05 mg Thimerosal, 0.05 mg Sodium azide.

Preservative: Thimerosal (Merthiolate), Sodium azide

Precaution of Use: This product contains Sodium azide and Thimerosal (Merthiolate): POISONOUS AND HAZARDOUS SUBSTANCES which should be handled by trained staff only.

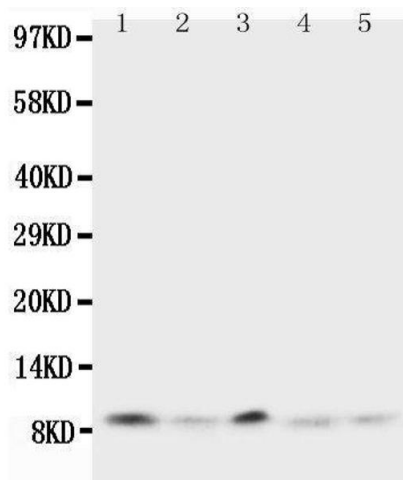
Handling Advice: Avoid repeated freezing and thawing.

Storage: 4 °C/-20 °C

Storage Comment: At -20°C for one year. After reconstitution, at 4°C for one month.
It can also be aliquotted and stored frozen at -20 °C for a longer time. Avoid repeated freezing and thawing.

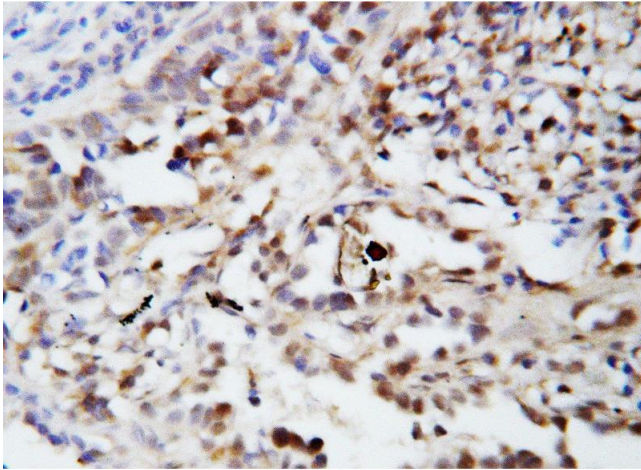
Expiry Date: 12 months

Images



Western Blotting

Image 1. Anti-Ubiquitin antibody, Western blotting Lane 1: Rat Thymus Tissue Lysate Lane 2: Human MCF-7 Cell Lysate Lane 3: MM231 Cell Lysate Lane 4: HELA Cell Lysate Lane 5: SMMC Cell Lysate



Immunohistochemistry

Image 2. Anti-Ubiquitin antibody, IHC(P) IHC(P): Human Lung Cancer Tissue