

Datasheet for ABIN3042747  
**anti-Cofilin antibody (AA 2-166)**

## 5 Images

[Go to Product page](#)

## Overview

Quantity:	100 µg
Target:	Cofilin (CFL1)
Binding Specificity:	AA 2-166
Reactivity:	Human, Mouse, Rat
Host:	Rabbit
Clonality:	Polyclonal
Conjugate:	This Cofilin antibody is un-conjugated
Application:	Western Blotting (WB), ELISA, Immunohistochemistry (Paraffin-embedded Sections) (IHC (p))

## Product Details

Purpose:	Rabbit IgG polyclonal antibody for Cofilin-1(CFL1) detection. Tested with WB, IHC-P, ELISA in Human,Mouse,Rat.
Immunogen:	E.coli-derived human Cofilin recombinant protein (Position: A2-L166). Human Cofilin shares 99% amino acid (aa) sequences identity with both mouse and rat Cofilin.
Isotype:	IgG
Cross-Reactivity (Details):	No cross reactivity with other proteins.
Characteristics:	<p>Rabbit IgG polyclonal antibody for Cofilin-1(CFL1) detection. Tested with WB, IHC-P, ELISA in Human,Mouse,Rat.</p> <p>Gene Name: cofilin 1 (non-muscle)</p> <p>Protein Name: Cofilin-1</p>
Purification:	Immunogen affinity purified.

## Target Details

Target:	Cofilin (CFL1)
Alternative Name:	CFL1 ( <a href="#">CFL1 Products</a> )
Background:	<p>Cofilin, a member of the ADF/cofilin family, is actually a protein with 70 % sequence homology to ADF, making it part of the ADF/cofilin family of small ADP-binding proteins. It is a ubiquitous actin-binding factor required for the reorganization of actin filaments. The protein is known to sever actin filaments by creating more positive ends on filament fragments, it can cause depolymerization at the minus end of filaments, thereby preventing their reassembly. As a long-lasting in vivo effect, cofilin recycles older ADP-F-actin, helping cell to maintain ATP-G-actin pool for sustained motility. pH , phosphorylation and phosphoinositides regulate cofilin's binding and associating activity with actin.</p> <p>Synonyms: 18 kDa phosphoprotein antibody CFL 1 antibody CFL antibody CFL1 antibody COF1_HUMAN antibody Cofilin 1 antibody Cofilin 1 non muscle antibody Cofilin antibody Cofilin non muscle isoform antibody Cofilin-1 antibody non-muscle isoform antibody p18 antibody</p>
Gene ID:	1072
UniProt:	<a href="#">P23528</a>
Pathways:	<a href="#">Regulation of Cell Size</a> , <a href="#">Tube Formation</a> , <a href="#">Protein targeting to Nucleus</a> , <a href="#">CXCR4-mediated Signaling Events</a>

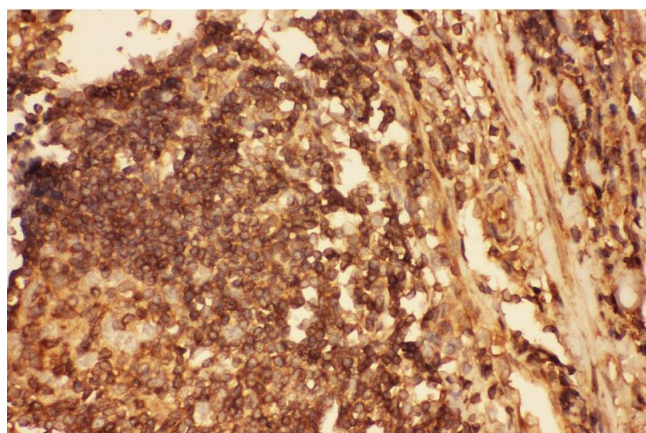
## Application Details

Application Notes:	<p>WB: Concentration: 0.1-0.5 µg/mL, Tested Species: Human, The detection limit for Cofilin is approximately 0.25 ng/lane under reducing conditions.</p> <p>IHC-P: Concentration: 0.5-1 µg/mL, Tested Species: Human, Mouse, Rat, Epitope Retrieval by Heat: Boiling the paraffin sections in 10 mM citrate buffer, pH 6.0, for 20 mins is required for the staining of formalin/paraffin sections.</p> <p>ELISA: Concentration: 0.1-0.5 µg/mL, Tested Species: Human</p> <p>Notes: Tested Species: Species with positive results. Other applications have not been tested. Optimal dilutions should be determined by end users.</p>
Comment:	Antibody can be supported by chemiluminescence kit ABIN921124 in WB, supported by ABIN921231 in IHC(P).
Restrictions:	For Research Use only

## Handling

Format:	Lyophilized
Reconstitution:	Add 0.2 mL of distilled water will yield a concentration of 500 µg/mL.
Concentration:	500 µg/mL
Buffer:	Each vial contains 5 mg BSA, 0.9 mg NaCl, 0.2 mg Na <sub>2</sub> HPO <sub>4</sub> , 0.05 mg Sodium azide.
Preservative:	Sodium azide
Precaution of Use:	This product contains Sodium azide: a POISONOUS AND HAZARDOUS SUBSTANCE which should be handled by trained staff only.
Handling Advice:	Avoid repeated freezing and thawing.
Storage:	4 °C/-20 °C
Storage Comment:	At -20°C for one year. After reconstitution, at 4°C for one month. It can also be aliquotted and stored frozen at -20 °C for a longer time. Avoid repeated freezing and thawing.

## Images



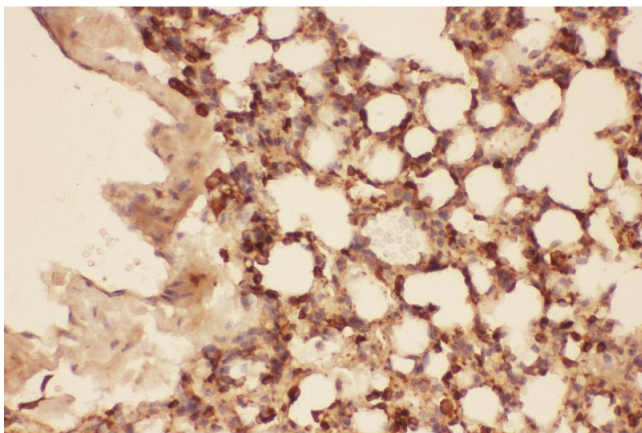
### Immunohistochemistry

**Image 1.** Anti-Cofilin Picoband antibody, IHC(P): Human Intestinal Cancer Tissue



#### Western Blotting

**Image 2.** Anti-Cofilin Picoband antibody, All lanes: Anti-Cofilin at 0.5ug/ml WB: Recombinant Human Cofilin Protein 0.5ng Predicted bind size: 36KD Observed bind size: 36KD



#### Immunohistochemistry

**Image 3.** Anti-Cofilin Picoband antibody, IHC(P): Mouse Lung Tissue

Please check the [product details page](#) for more images. Overall 5 images are available for ABIN3042747.