

Datasheet for ABIN3042751
anti-Claudin 2 antibody (AA 38-230)[Go to Product page](#)**2** Images**1** Publication

Overview

Quantity:	100 µg
Target:	Claudin 2 (CLDN2)
Binding Specificity:	AA 38-230
Reactivity:	Human, Rat
Host:	Rabbit
Clonality:	Polyclonal
Conjugate:	This Claudin 2 antibody is un-conjugated
Application:	Western Blotting (WB), Immunohistochemistry (Paraffin-embedded Sections) (IHC (p))

Product Details

Purpose:	Rabbit IgG polyclonal antibody for Claudin-2(CLDN2) detection. Tested with WB, IHC-P in Human,Rat.
Immunogen:	E.coli-derived human Claudin 2 recombinant protein (Position: A38-V230). Human Claudin 2 shares 92% amino acid (aa) sequence identity with mouse Claudin 2.
Isotype:	IgG
Cross-Reactivity (Details):	No cross reactivity with other proteins.
Characteristics:	Rabbit IgG polyclonal antibody for Claudin-2(CLDN2) detection. Tested with WB, IHC-P in Human,Rat. Gene Name: claudin 2 Protein Name: Claudin-2
Purification:	Immunogen affinity purified.

Target Details

Target:	Claudin 2 (CLDN2)
Alternative Name:	CLDN2 (CLDN2 Products)
Background:	<p>Claudin-2 is a protein that in humans is encoded by the CLDN2 gene. By genomic sequence analysis, this gene is mapped to chromosome Xq22.3-q23. This gene product belongs to the claudin protein family whose members have been identified as major integral membrane proteins localized exclusively at tight junctions. Claudins are expressed in an organ-specific manner and regulate tissue-specific physiologic properties of tight junctions. By expression in a human intestinal epithelial cell line, it was determined that the intestine-specific homeodomain proteins CDX1 and CDX2 activated a reporter plasmid driven by the CLDN2 promoter.</p> <p>Synonyms: Claudin-2 antibody Claudin2 antibody CLD2_HUMAN antibody CLDN 2 antibody CLDN2 antibody OTTHUMP00000023793 antibody SP 82 antibody SP82 antibody</p>
Gene ID:	9075
UniProt:	P57739
Pathways:	Hepatitis C

Application Details

Application Notes:	<p>WB: Concentration: 0.1-0.5 µg/mL, Tested Species: Rat, Predicted Species: Human, The detection limit for Claudin 2 is approximately 0.2 ng/lane under reducing conditions.</p> <p>IHC-P: Concentration: 0.5-1 µg/mL, Tested Species: Human, Epitope Retrieval by Heat: Boiling the paraffin sections in 10 mM citrate buffer, pH 6.0, for 20 mins is required for the staining of formalin/paraffin sections.</p> <p>Notes: Tested Species: Species with positive results. Predicted Species: Species predicted to be fit for the product based on sequence similarities. Other applications have not been tested.</p> <p>Optimal dilutions should be determined by end users.</p>
Comment:	Antibody can be supported by chemiluminescence kit ABIN921124 in WB, supported by ABIN921231 in IHC(P).
Restrictions:	For Research Use only

Handling

Format:	Lyophilized
Reconstitution:	Add 0.2 mL of distilled water will yield a concentration of 500 µg/mL.

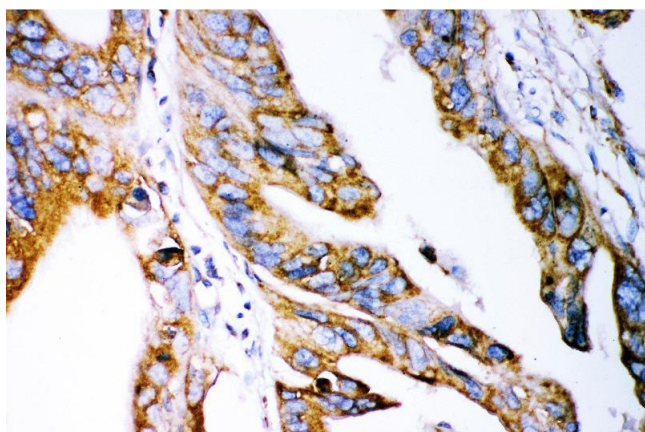
Handling

Concentration:	500 µg/mL
Buffer:	Each vial contains 5 mg BSA, 0.9 mg NaCl, 0.2 mg Na ₂ HPO ₄ , 0.05 mg Sodium azide.
Preservative:	Sodium azide
Precaution of Use:	This product contains Sodium azide: a POISONOUS AND HAZARDOUS SUBSTANCE which should be handled by trained staff only.
Handling Advice:	Avoid repeated freezing and thawing.
Storage:	4 °C/-20 °C
Storage Comment:	At -20°C for one year. After reconstitution, at 4°C for one month. It can also be aliquotted and stored frozen at -20 °C for a longer time. Avoid repeated freezing and thawing.

Publications

Product cited in:	Li, Byrd, Doh, Dixon, Lee, Tiwari, Ecelbarger: "Absence of renal enlargement in fructose-fed proximal-tubule-select insulin receptor (IR), insulin-like-growth factor receptor (IGF1R) double knockout mice." in: Physiological reports , Vol. 4, Issue 23, (2018) (PubMed).
-------------------	---

Images



Immunohistochemistry

Image 1. Anti- Claudin 2 antibody, IHC(P) IHC(P): Human Intestinal Cancer Tissue



Western Blotting

Image 2.