

Datasheet for ABIN3042760  
**anti-CRY2 antibody (N-Term)**

## 3 Images

[Go to Product page](#)

## Overview

Quantity:	100 µg
Target:	CRY2
Binding Specificity:	AA 171-200, N-Term
Reactivity:	Human, Mouse, Rat
Host:	Rabbit
Clonality:	Polyclonal
Conjugate:	This CRY2 antibody is un-conjugated
Application:	Western Blotting (WB), Immunohistochemistry (Paraffin-embedded Sections) (IHC (p))

## Product Details

Purpose:	Rabbit IgG polyclonal antibody for Cryptochrome-2(CRY2) detection. Tested with WB, IHC-P in Human,Mouse,Rat.
Immunogen:	A synthetic peptide corresponding to a sequence at the N-terminus of human CRY2 (171-200aa RFQAIISRMELPKKPVGGLVTSQQMESCRAE), different from the related mouse and rat sequences by five amino acids.
Sequence:	RFQAIISRME LPKKPVGLVT SQQMESCRAE
Isotype:	IgG
Cross-Reactivity (Details):	No cross reactivity with other proteins.
Characteristics:	Rabbit IgG polyclonal antibody for Cryptochrome-2(CRY2) detection. Tested with WB, IHC-P in Human,Mouse,Rat.  Gene Name: cryptochrome circadian clock 2

## Product Details

Protein Name: Cryptochrome-2

Purification: Immunogen affinity purified.

## Target Details

Target: CRY2

Alternative Name: CRY2 ([CRY2 Products](#))

Background: This gene encodes a flavin adenine dinucleotide-binding protein that is a key component of the circadian core oscillator complex, which regulates the circadian clock. And it is upregulated by CLOCK/ARNTL heterodimers but then represses this upregulation in a feedback loop using PER/CRY heterodimers to interact with CLOCK/ARNTL. Polymorphisms in this gene have been associated with altered sleep patterns. The encoded protein is widely conserved across plants and animals. Two transcript variants encoding different isoforms have been found for this gene.

Synonyms: cry2 antibody|CRY2\_HUMAN antibody|cryptochrome 2 (photolyase like) antibody|Cryptochrome 2 antibody|Cryptochrome-2 antibody|FLJ10332 antibody|growth inhibiting protein 37 antibody|HCRY2 antibody|KIAA0658 antibody|PHLL2 antibody|Photolyase like antibody

Gene ID: 1408

Pathways: [Response to Water Deprivation](#), [Protein targeting to Nucleus](#)

## Application Details

Application Notes: WB: Concentration: 0.1-0.5 µg/mL, Tested Species: Human, Mouse, Rat  
IHC-P: Concentration: 0.5-1 µg/mL, Tested Species: Mouse, Rat, Predicted Species: Human,  
Epitope Retrieval by Heat: Boiling the paraffin sections in 10 mM citrate buffer, pH 6.0, for 20 mins is required for the staining of formalin/paraffin sections.  
Notes: Tested Species: Species with positive results. Predicted Species: Species predicted to be fit for the product based on sequence similarities. Other applications have not been tested.  
Optimal dilutions should be determined by end users.

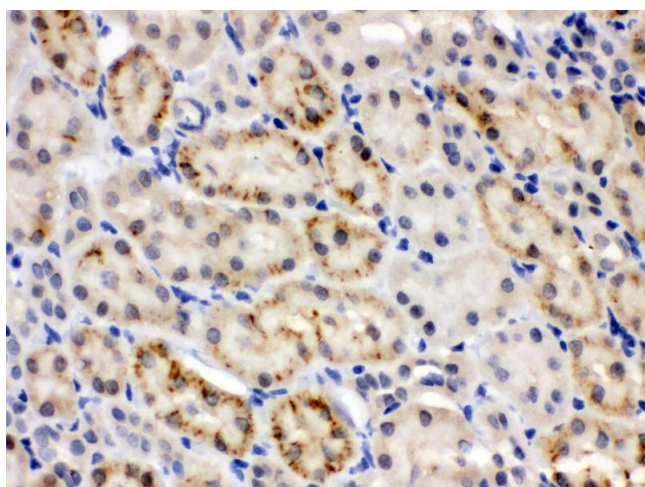
Comment: Antibody can be supported by chemiluminescence kit ABIN921124 in WB, supported by ABIN921231 in IHC(P).

Restrictions: For Research Use only

## Handling

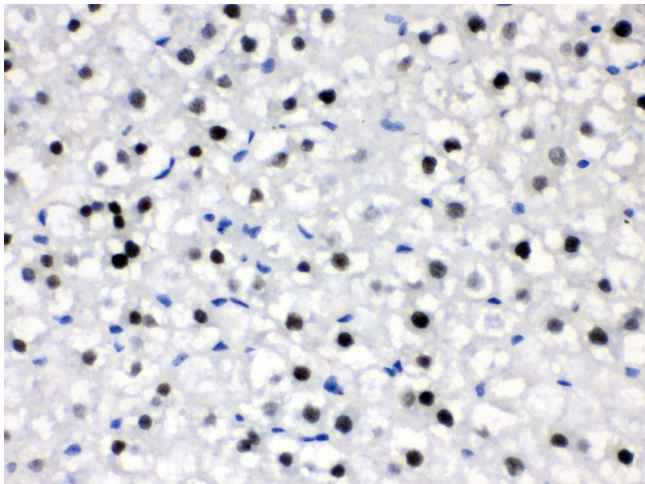
Format:	Lyophilized
Reconstitution:	Add 0.2 mL of distilled water will yield a concentration of 500 µg/mL.
Concentration:	500 µg/mL
Buffer:	Each vial contains 5 mg BSA, 0.9 mg NaCl, 0.2 mg Na <sub>2</sub> HPO <sub>4</sub> , 0.05 mg Sodium azide.
Preservative:	Sodium azide
Precaution of Use:	This product contains Sodium azide: a POISONOUS AND HAZARDOUS SUBSTANCE which should be handled by trained staff only.
Handling Advice:	Avoid repeated freezing and thawing.
Storage:	4 °C/-20 °C
Storage Comment:	At -20°C for one year. After reconstitution, at 4°C for one month. It can also be aliquotted and stored frozen at -20 °C for a longer time. Avoid repeated freezing and thawing.

## Images



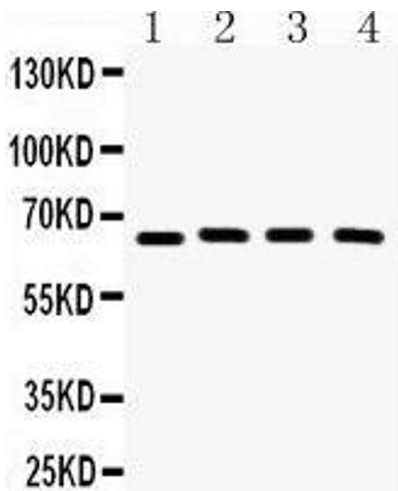
### Immunohistochemistry

**Image 1.** Anti- CRY2 Picoband antibody,IHC(P) IHC(P):  
Mouse Kidney Tissue



Immunohistochemistry

**Image 2.** Anti- CRY2 Picoband antibody,IHC(P) IHC(P): Rat Liver Tissue



Western Blotting

**Image 3.**