



[Go to Product page](#)

Datasheet for ABIN3042763

anti-M-CSF/CSF1 antibody (AA 33-262)

2 Images

1 Publication

Overview

Quantity:	100 µg
Target:	M-CSF/CSF1 (CSF1)
Binding Specificity:	AA 33-262
Reactivity:	Mouse, Rat
Host:	Rabbit
Clonality:	Polyclonal
Conjugate:	This M-CSF/CSF1 antibody is un-conjugated
Application:	ELISA, Immunohistochemistry (Paraffin-embedded Sections) (IHC (p))

Product Details

Purpose:	Rabbit IgG polyclonal antibody for Macrophage colony-stimulating factor 1(CSF1) detection. Tested with IHC-P, ELISA in Mouse,Rat.
Immunogen:	E. coli-derived mouse MCSF recombinant protein (Position: K33-E262). Mouse MCSF shares 80.9 % and 88.6% amino acid (aa) sequence identity with human and rat MCSF, respectively.
Isotype:	IgG
Cross-Reactivity (Details):	No cross reactivity with other proteins.
Characteristics:	Rabbit IgG polyclonal antibody for Macrophage colony-stimulating factor 1(CSF1) detection. Tested with IHC-P, ELISA in Mouse,Rat. Gene Name: colony stimulating factor 1 (macrophage) Protein Name: Macrophage colony-stimulating factor 1
Purification:	Immunogen affinity purified.

Target Details

Target:	M-CSF/CSF1 (CSF1)
Alternative Name:	CSF1 (CSF1 Products)
Background:	<p>M-CSF (or CSF-1) is a hematopoietic growth factor that is involved in the proliferation, differentiation, and survival of monocytes, macrophages, and bone marrow progenitor cells. M-CSF affects macrophages and monocytes in several ways, including stimulating increased phagocytic and chemotactic activity, and increased tumour cell cytotoxicity. The role of M-CSF is not only restricted to the monocyte/macrophage cell lineage. By interacting with its membrane receptor (CSF1R or M-CSF-R encoded by the <i>c-fms</i> proto-oncogene), M-CSF also modulates the proliferation of earlier hematopoietic progenitors and influence numerous physiological processes involved in immunology, metabolism, fertility and pregnancy.</p> <p>Synonyms: Colony stimulating factor 1 (macrophage) antibody Colony stimulating factor 1 antibody Colony stimulating factor macrophage specific antibody CSF 1 antibody CSF-1 antibody CSF1 antibody CSF1_HUMAN antibody Csfm antibody Lanimostim antibody M CSF antibody M-CSF antibody Macrophage Colony Stimulating Factor 1 antibody Macrophage colony stimulating factor antibody MCSF antibody MGC31930 antibody Processed macrophage colony-stimulating factor 1 antibody</p>
Gene ID:	12977
UniProt:	P07141
Pathways:	RTK Signaling

Application Details

Application Notes:	<p>IHC-P: Concentration: 0.5-1 µg/mL, Tested Species: Mouse, Rat, Epitope Retrieval by Heat: Boiling the paraffin sections in 10 mM citrate buffer, pH 6.0, for 20 mins is required for the staining of formalin/paraffin sections.</p> <p>ELISA: Concentration: 0.1-0.5 µg/mL, Tested Species: Mouse</p> <p>Notes: Tested Species: Species with positive results. Other applications have not been tested. Optimal dilutions should be determined by end users.</p>
Comment:	Antibody can be supported by ABIN921231 in IHC(P).
Restrictions:	For Research Use only

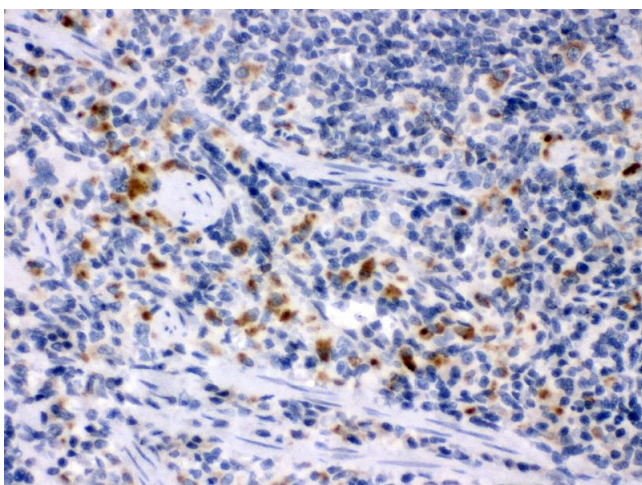
Handling

Format:	Lyophilized
Reconstitution:	Add 0.2 mL of distilled water will yield a concentration of 500 µg/mL.
Concentration:	500 µg/mL
Buffer:	Each vial contains 5 mg BSA, 0.9 mg NaCl, 0.2 mg Na ₂ HPO ₄ , 0.05 mg Sodium azide.
Preservative:	Sodium azide
Precaution of Use:	This product contains Sodium azide: a POISONOUS AND HAZARDOUS SUBSTANCE which should be handled by trained staff only.
Handling Advice:	Avoid repeated freezing and thawing.
Storage:	4 °C/-20 °C
Storage Comment:	At -20°C for one year. After reconstitution, at 4°C for one month. It can also be aliquotted and stored frozen at -20 °C for a longer time. Avoid repeated freezing and thawing.

Publications

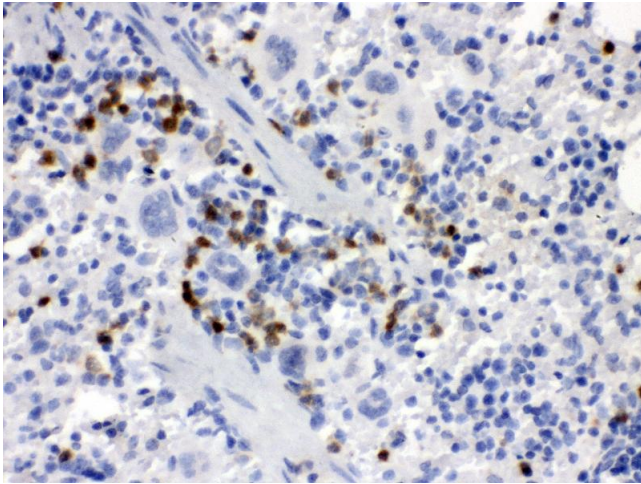
Product cited in:	Pei, Sun, Zhang, Wang, Ren: "Interstitial tumor-associated macrophages combined with tumor-derived colony-stimulating factor-1 and interleukin-6, a novel prognostic biomarker in non-small cell lung cancer." in: The Journal of thoracic and cardiovascular surgery , Vol. 148, Issue 4, pp. 1208-1216.e2, (2015) (PubMed).
-------------------	--

Images



Immunohistochemistry

Image 1. Anti- MCSF Picoband antibody, IHC(P) IHC(P): Rat Spleen Tissue



Immunohistochemistry

Image 2. Anti- MCSF Picoband antibody, IHC(P) IHC(P):
Mouse Spleen Tissue